

# Hampden County 4-H/Youth Fair

## 4-H An American Tradition

# July 25, 2026



## Celebrate America's 250th

### At the Eastern States Exposition in the Mallary Complex

University of Massachusetts Extension

United States Department of Agriculture and Massachusetts Department of Agriculture cooperating



## **Welcome to the 73<sup>rd</sup> Hampden County 4-H / Youth Fair**

*Dear Fellow 4-H'ers!*

*In 2026, the United States of America celebrates its 250<sup>th</sup> anniversary. As part of this historic milestone, this year's Hampden County 4-H / Youth Fair celebrates the people, ideas and innovations that have shaped our nation.*

*Today's youth are developing skills to meet tomorrow's ever-changing demands and preparing for careers we have yet to define. We encourage and provide the opportunity for all youth to spark ideas, test methods, streamline a process - innovate and create - to learn by doing in a positive space guided by supportive, passionate educators and volunteers. Through projects, exhibits and experiences, 4-H youth reflect on our history while building skills that will lead American into its next 250 years.*

*The Fair Association will post periodic updates on our websites. Be sure to check back often in the days leading up to the Fair.*

*We are looking forward to another successful Fair and can hardly wait to see you there!*

*Sincerely,*

*The Hampden County 4-H / Youth Fair Association*



UMass Extension is a unit of the Center for Agriculture, Food & the Environment in the College of Natural Sciences. UMass Extension is an equal opportunity provider & employer, United States Department of Agriculture cooperating. Contact your local UMass Extension office for information on disability accommodations or the UMass Director if you have concerns related to discrimination, 413-545-4800 or refer to [www.extension.umass.edu/civilrights](http://www.extension.umass.edu/civilrights).

UNIVERSITY OF MASSACHUSETTS AMHERST

# HAMPDEN COUNTY 4-H / YOUTH FAIR

## 2026 Fairbook Table of Contents

Welcome Letter .....	1
What's New for 2026 .....	3
Hampden County 4-H / Youth Fair 2026 Officers and Directors .....	4
Organization and Purpose of the Hampden County 4-H / Youth Fair .....	4
Schedule of Events .....	5
Special Awards .....	6
Fair General Rules.....	8
2026 Animal Health Rules for Fairs and Shows.....	9
Livestock General Rules.....	15
Division 1 - Dairy.....	16
Division 2 - Beef.....	17
Division 2A - Working Steer.....	19
Division 3 - Sheep.....	20
Division 4 - Swine.....	22
Division 5 - Goat.....	23
Division 5A - Camelids.....	26
Division 7 - Rabbit and Cavy.....	27
Division 8 - Model Horse Show.....	28
Division 8A - Dog Show.....	30
Hall Exhibit General Rules.....	35
Division 9 - Club and Group Exhibit.....	36
Division 9A - Individual Exhibit.....	38
Division 10 - Vegetable, Fruit, and Environmental Collections.....	40
Division 11 - Flower.....	41
Division 12 - Canning.....	43
Division 13 - Food.....	45
Division 14 - Clothing.....	48
Division 15 - Knitting.....	50
Division 16 - Crocheting.....	51
Division 16A - Quilt.....	52
Division 17 - Needle Craft.....	54
Division 17A - Machine Embroidery.....	54
Division 18 - Handmade Craft.....	55
Division 19 - Handmade Craft Display.....	56
Division 19A - Hobby Display .....	56
Division 20 - 4-H Poster Contest.....	57
Division 21 - Art Show.....	58
Division 22 - Handicraft.....	59
Division 23 - Agricultural Mechanics.....	59
Division 24 - Graphic Art.....	60
Division 25 - Photography.....	61
Division 26 - Science, Technology, Engineering, and Math (STEM).....	63
More Fair Activities.....	65
List of 2025 Donors.....	66
Entry Forms, Award Applications, 4-H Volunteer Forms.....	67

# What's New For 2026!

**IMPORTANT:** Based on the issues associated with HPAI in both wild and domestic birds and the issues with HPAI in dairy cattle, and the advice from Animal Health Officials from all six New England States, the poultry show will not occur again this year.



Celebrate the 250<sup>th</sup> Anniversary of the United States of America with us by entering patriotic themed exhibits! Use your imagination!



Some Class ideas include:

951 - Individual Division - <i>Patriotic Theme</i>	1339 - Food Division - <i>Patriotic Decorated Cake</i>
1148 - Flower Division - <i>Freedom Reigns</i>	2645 - STEM Division - <i>Shoe Box Float</i>
1152 - Flower Division - <i>Red, White and Blue</i>	Division 20 - Poster Contest
1251, 1252, 1253 Canning Division - <i>Gift Baskets</i>	Livestock Costume Classes

✿ All 4Hers are encouraged again this year to bring a donation for the *Pedal Thru Youth Cruiser Care Pack Program*. Donations may include **travel size** shampoo, tissues, wipes, soap bars, deodorant, toothpaste, toothbrush, chap-stick, etc. The donation box will be at the Registration table.

✿ Visit our website and download our *2026 Hampden County 4-H Fair Book* at [www.hampdencounty4hfair.org](http://www.hampdencounty4hfair.org) or scan the QR code below:



✿ Fair entries should be submitted on line at <http://hc4hfair.fairentry.com> unless you do not have access to the internet.

✿ Like us on Facebook: <https://www.facebook.com/hampdencounty4h>

✿ Access 4-H information at: [www.mass4h.org](http://www.mass4h.org)

✿ Check on-line at *Commonwealth of Massachusetts Department of Agricultural Resources / Fairs* for updates to the *2026 Animal Health Rules for Fairs and Shows* that occurred after the printing of this fair book.

✿ **Division 7 - Rabbit and Cavy, Division 8A - Dog Show, Division 16A - Quilt**  
Increased Premium Points and Danish Points.

✿ **Division 13 - Food**

Fair recipes:

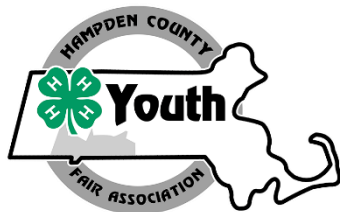
*Oatmeal Peanut Butter Treasures* for Juniors  
*Patriotic Cupcakes* for Seniors

✿ **Division 16A - Quilts** Judging based on the *Quilt Evaluation Rubric*.

✿ The Hampden County 4-H / Youth Fair Association is excited to partner with *Pedal Thru Youth* again this year! Check the Hampden County 4-H / Youth Fair social media sites for current information about the bike rodeo, parade and other bike events that are planned.

# HAMPDEN COUNTY 4-H/YOUTH FAIR ASSOCIATION

## 2026 Officers and Directors



**President**  
Paul Tippett

**Vice President**  
Randy Brown

**Recording Secretaries**  
Jeanne Tippett  
Paul Tippett

**Corresponding Secretary**  
Caitlyn Tippett



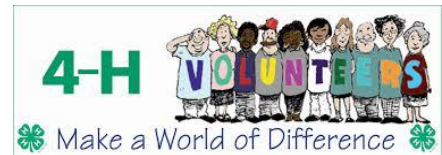
**Treasurer**  
Sue Bonini

**Assistant Treasurer**  
Randy Brown

**Publicity Coordinator**  
Anne-Alise Pietruska

**Awards Coordinator**  
Elena Lynch

**Board of Directors**  
Carey Leckie  
Randy Brown  
Jaxson Brown  
Michael Pietruska  
Marilyn Fil



### ORGANIZATION AND PURPOSE OF THE HAMPDEN COUNTY 4-H / YOUTH FAIR

The Hampden County 4-H/Youth Fair Association is sponsoring the Hampden County 4-H / Youth Fair on July 25, 2026. The primary objective of the Association is to promote and encourage the enrichment of all youth in Hampden County. The purpose of this fair is to offer youth an opportunity to publicly display their talents; develop leadership skills; stimulate positive competition in older youth; enhance self-worth; and encourage the development of better agricultural and creative products.

Membership in the Association is open to all interested adults, volunteer leaders, senior 4-H youth (ages 14 to 18), and such persons that are interested in the objective of the Association. The Massachusetts Department of Agriculture cooperates with this fair.



# HAMPDEN COUNTY 4-H / YOUTH FAIR



## Schedule Of Events

### **Wednesday, July 22, 2026**

6 p.m. - Finish                      Set-up exhibit tables and animal pens in the Mallary Complex.  
Everyone is encouraged to help.

### **Friday, July 24, 2026**

3:00 p.m.- 6:30 p.m.              Exhibitors bring Hall exhibits to Mallary Complex; tag exhibits and  
put them in place.

7:00 p.m.- Finish                      Hall exhibit judging begins.

### **Saturday, July 25, 2026**

### **DAY OF THE FAIR**

7:00 - 9:00 a.m.                      Dairy, Beef, Working Steer, Sheep, Rabbit, and Dog departments  
open to receive animals in the Mallary Complex.

8:00 - 9:00 a.m.                      Poultry and Goat departments open to receive animals in the  
Mallary Complex.

**FAIR HOURS:    8:30 a.m. - 5:00 p.m.    FREE ADMISSION  
FREE PARKING**

9:00 a.m.	Kids Fun Run (open to all youth) on the outside track
9:30 a.m.	Dairy, Goat and Rabbit Shows
	Food Booth Opens
10:00 a.m.	Working Steer, Sheep, Poultry and Dog Shows
	Raffle Tickets on Sale
	Bottle Rocket Launch
	Arts and Craft Booth Opens
	Wheel of Knowledge
11:00 a.m.	Model Horse Show
	<i>Pedal Thru Youth</i> Events Begin
12:00 p.m.	Beef Show
12:30 p.m.	Visual, Public Speaking, and Performing Arts/Talent Show Presentations
1:00 p.m.	Pedal Tractor Pull
3:00 p.m.	Fashion Revue
3:30 p.m.	Lead Line and Wool Competition
4:00 p.m.	Awards Presentation
5:00 p.m.	Fair exhibits removal, disassemble tables and pens, storage, clean-up

# **HAMPDEN COUNTY 4-H / YOUTH FAIR**

## **Special Awards**

Awards are presented to the best exhibit(or) in each division, in addition to a number of special awards described below.

### **Merritt Wright Award**

This award is given to two senior exhibitors at the fair who are actively involved in the county or club program, who assist in the setup and cleanup of the 4-H Fair, and assist during the fair. This award is given in memory of a longtime supporter of the fair and one of its past presidents, Merritt Wright.

### **Michael Demko Award**

A special award will be presented to a junior exhibitor, who is an active 4-H member, assists in the setup and cleanup of the 4-H Fair, and assists during the fair. This award is given in memory of Michael Demko, a long time 4-H volunteer and past 4-H Fair Association Director, who was especially active in the 4-H Service Club and in raising funds for the fair through the milk booth at the Eastern States Exposition.

### **Zoafia Demko Award**

A special award will be presented by the 4-H Fair Association to a Hampden County 4-H member, 13 years of age or older as of January 1, 2026, who is active in 4-H and community service activities. This award is being given in memory of Zoafia Demko, who dedicated herself to community service in the 4-H program and in the community. **The application is located at the back of the fair book.**

### **Bertha Tower Award**

A special award, to help defray educational expenses, will be presented to up to three outstanding Hampden County 4-H home economics members. These awards are given in memory of Bertha Tower, an active and enthusiastic supporter of the 4-H program. The selection committee will review and evaluate all applications. **The application is located at the back of the fair book.**

### **Sweepstakes Award**

This special award recognizes the Hampden County 4-H exhibitor who has the most quality exhibits. The 4-H Fair Association will present this award to the exhibitor who accumulates the most blue Danish ribbons in the Hall Exhibit entries. In the event of a tie, the number of red Danish ribbons will be considered. This award may be received only 3 times per exhibitor.

### **Simonne Bienvenue Award**

This award is given in memory of Simonne Bienvenue, a long time 4-H volunteer. It will be awarded to a deserving junior or senior exhibitor at the fair who has exhibited a high-quality project in the areas of baking, canning, handmade crafts, crocheting or knitting. This award will be decided upon by the members of her family.

# HAMPDEN COUNTY 4-H / YOUTH FAIR

## Special Awards (cont.)

### Mary Phelon Memorial Trophy

Two trophies will be presented in memory of Mary Phelon who dedicated her life to the youth of Hampden County. The award will be given to the winner of the Hampden County Pleasure Walk Trot and the winner of the Hampden County Pleasure Walk Trot Canter classes. The classes are open to all Hampden County exhibitors.

### Frances Morin Memorial Award

The best overall 4-H rabbit showman will receive an individual award. This award is given in memory of Frances Morin whose family was very active in the Hampden County 4-H Program.

### Hampden County 2026 4-H / Youth Fair Book Cover Contest

This year's winners are:

**Front cover** - Keira Leigh Jacquier (age 17)

**Back cover** – Carmella Vadnais (age 11)

A special thanks to all for submitting an entry!  
Winners will be awarded a gift card.



# HAMPDEN COUNTY 4-H / YOUTH FAIR

## Fair General Rules

- ELIGIBILITY:** This fair is open to **all youth** in Hampden County between the ages of 5 and 18 years as of January 1, 2026, in addition to registered 4-H members in all other counties. Premiums are paid to youth in Hampden County and registered 4-H members. All exhibits must be the result of the exhibitor's own effort from August 2026 through July 2026.  
  
4-H is committed to serving the best interests of youth. Research in youth development indicates that young children under age 8 should not be in competitive situations. This 4-H / Youth Fair will follow the guidelines developed for Massachusetts in regards to Cloverbuds (youth age 5 to 7 years) in competition.
- YOUTH WITH DISABILITIES:** Youth between the ages of 8 and 18 years as of January 1, 2026 requiring special accommodations should contact Meaghan Lake, 4-H Extension Director, at [meaghanlake@umass.edu](mailto:meaghanlake@umass.edu) by July 8, 2026 to outline the accommodations required.
- ALL ENTRIES** should be made online at <http://hc4hfair.fairentry.com> with the exception of the Model Horse Show entries. If unable to access the internet, entries may be made on the official Hampden County 4-H/Youth Fair entry forms located at the back of this book. Additional entry forms and award applications may be downloaded from [www.hampdencounty4hfair.org](http://www.hampdencounty4hfair.org). **Entries must be postmarked or received electronically by July 15, 2026. A limited number of add-ons or changes may be accepted.** Entries must be received by the deadline so that there is adequate time to enter information into the fair computer program and generate entry tags. **Individuals who submit a late entry form will forfeit premiums. Absolutely no hall entries or new animal entries will be accepted the day of the Fair. Exception: Model Horse Show exhibits are set up the morning of the Fair by 10:30 a.m.**
- SYSTEM OF JUDGING:** The true Danish system of judging will be used on all premiums paid by the Hampden County 4-H/Youth Fair Association and the point system of awards will be used. Placing will be awarded on the basis of the exhibit's quality. Premiums will be paid according to numerical placing within the class using the number of points listed. Superintendents and judges reserve the right to reject any exhibits that are not on the premium list or are of undesirable quality. The judge's decision is final.
- SPECIAL RULES:** Specific age and competition regulations for Livestock and Hall Exhibits are found in the Livestock General Rules, Hall Exhibit General Rules, and the individual division rules.
- ATTIRE:** Proper attire is required for all exhibitors for the duration of the Fair.
- WORK ON EXHIBITS:** Only 4-H members or youth will be permitted to work on animals or exhibits after arrival on the fairgrounds.
- LOSS OR DAMAGE:** The Hampden County 4-H Youth/Fair Association will take every precaution to safeguard all exhibits. However, the Fair Association will not be responsible for loss, theft, or damage to any article, or loss or sickness of any livestock.
- VEHICLES: For safety reasons, no exhibitor or visitor vehicles are allowed in the Mallary Complex.**
- RELEASE OF EXHIBITS:** All Animal and Hall Exhibits must remain in place until 5:00 p.m. on July 25<sup>th</sup> or until the end of the Awards Presentations, whichever comes later. Early removal will result in the forfeit of premiums.
- Trophy and award recipients must write a thank you note to the donor.**

# The Commonwealth of Massachusetts

Executive Office of Energy and Environmental Affairs



## Department of Agricultural Resources

100 Cambridge Street, 9<sup>th</sup> Floor, Boston, MA 02114

[www.mass.gov/agr](http://www.mass.gov/agr)



MAURA T. HEALEY  
Governor

KIMBERLY DRISCOLL  
Lt. Governor

REBECCA L. TEPPER  
Secretary

ASHLEY E. RANDLE  
Commissioner

### **Avian Influenza (HPAI) Notices:**

**Due to the continuing US outbreak of Highly Pathogenic Avian Influenza (HPAI) in domesticated and wild birds and in dairy cattle, Animal Health Officials from all six New England States are united in advising the following for agricultural fairs, competitions, exhibitions, shows, swaps, or other in-person events that encourage the gathering or co-mingling of birds and/or cattle:**

#### **Avian species**

The New England State Veterinarians strongly discourage the exhibition of domestic and wild waterfowl species and may recommend delaying or canceling domestic fowl or poultry shows. If events are held, best practices for biosecurity should be implemented. Waterfowl exhibitions are currently banned in MA through April 30, 2026, which may be extended.

#### **Bovine species**

The New England State Veterinarians strongly discourage the exhibition of any bovines, including both dairy and beef cattle, that have been present in any state at the time that state had a current outbreak of HPAI in cattle. Bovines that have been shipped from currently affected states in 2026 should not be allowed on the premises of New England fairs or shows. Moving to or from an affected state for any reason will void any New England Fair and Show Season Official Certificates of Veterinary Inspection (OCVIs) that have been issued for such cattle for the remainder of the 2026 season.

The USDA APHIS Veterinary Services Federal Order Requiring Testing for and Reporting of Highly Pathogenic Avian Influenza in Livestock issued on April 24, 2024, remains in effect. It can be found on the USDA website:

[www.aphis.usda.gov/sites/default/files/dairy-federal-order.pdf](http://www.aphis.usda.gov/sites/default/files/dairy-federal-order.pdf)

### **GENERAL RULES FOR ALL ANIMALS:**

See M.G.L. c, 128 §2C, 129 §2

Continue to next sections for additional, specific rules for Cattle, Poultry, Goats, Camelids, Swine, Sheep, Equines, Rabbits, and Dogs and Cats.

1. All animals must be:
  - a. In proper physical condition
  - b. Properly identified
  - c. Free of visual evidence of infectious, contagious, or parasitic disease at time of arrival
    - 1) Animals of any species with open or draining wounds will not be approved for entry.
2. An animal will be rejected from entry if:
  - a. There is evidence of infectious, contagious, or parasitic disease or open or draining wounds
  - b. Failure to produce the necessary documents for certification, vaccination, or testing
  - c. **THE INSPECTOR'S DECISION IS FINAL.**
3. Any surgical procedure or injection of foreign substance or drug, or the application of confirmation, or any substance which could affect the animal's performance or alter its natural contour, appearance is prohibited.
  - a. Irritants, counterirritants, or similar substances that affect the animal's performance, contour, confirmation, or appearance is prohibited.
  - b. Exceptions include:
    - 1) External applications of substances to the hooves or horns of animals that affect appearance only are permitted.
    - 2) Surgical procedures performed by a duly licensed veterinarian for the sole purpose of protecting the animal are permitted.

#### 4. Official Identification (ID):

- a. All livestock must have proper official, individual ID as required and approved by the USDA and accepted by the fair or show for the species such as official metal ear tags, tattoos, scrapie tags, or microchips.
- b. Registration forms must accompany health certificates when used as part of official identification, e.g. with breed registry tattoos or microchips.

#### 5. Health Certificates: New England Animals Showing in New England States

- a. One Official Certificate of Veterinary Inspection (OCVI) may be allowed for animals of the same species to be exhibited at fairs or shows in any of the New England States when submitted with an itinerary of the dates and locations of the events at which the listed animals are expected to be shown. Only animals that are healthy at the time of shipment may be moved.
- b. For the 2026 Show and Fair season, OCVIs being used for the full season must meet all the requirements detailed in the 2026 New England Fairs and Shows memo issued jointly by the state veterinarians of CT, ME, MA, NH, RI, and VT (attached at the end of this document). This memo may be updated at any time during the fair season in response to animal health outbreaks.

#### 6. Health Certificates: General Rules for All Animals

- a. Multiple animals of the same species may be listed on one health certificate with appropriate individual IDs and descriptions. Animals of different species may not be listed on the same official health certificate.
- b. An itinerary of the names and locations of each New England fair or show at which the owner expects to show the listed animals and the dates when each animal is expected to be on each site must be prepared by the owner and presented to the veterinarian at the time of the OCVI is written.
  - 1) A copy of this planned itinerary must be attached to the official health certificate (import and export) for it to be used for more than one fair or show.
  - 2) That proposed list should be signed by the veterinarian and the owner/exhibitor and reference the relevant OCVI number(s).
- c. The name and address of the first show or fair where the listed animal will be exhibited is to be used as the "destination" on the OCVI form.
  - 1) "See attached list" or similar statement directing Animal Health Official or Fair Inspectors to the attached proposed itinerary must be included.
- d. Exhibitors must keep an accurate list of the show locations and dates when their animals were present on show or fairgrounds. This record must be available to Fair Inspectors at each inspection and check-in.
- e. Any animal listed on an OCVI that becomes sick must remain home. If the animal is refused entry to any exhibition during 2026 for health reasons, it must have a new health certificate issued by an accredited veterinarian within 30 days of the next interstate movement.
- f. Any New England state may end their participation in this agreement and revert to the standard published requirements for livestock imports in the state at any time, in the event of foreign animal disease outbreak or changes to state legislation.

#### **Cattle Specific Information**

See M.G.L c. 129 §§2, 39 and 330 CMR 4.04(2).

##### *Bovine species- Special Notice 2026*

The New England State Veterinarians strongly discourage the exhibition of any bovines, including both dairy and beef cattle, that have been present in any state at the time that state had a current outbreak of HPAI in cattle. Bovines that have been shipped from currently affected states in 2026 should not be allowed on the premises of New England fairs or shows. Moving to or from an affected state for any reason will void any New England Fair and Show Season Official Certificates of Veterinary Inspection (OCVIs) that have been issued for such cattle for the remainder of the 2026 season. The states currently affected by HPAI in cattle can be found on the USDA website:

<https://www.aphis.usda.gov/livestock-poultry-disease/avian/avian-influenza/hpaidetections/hpai-confirmed-cases-livestock>

The USDA APHIS Veterinary Services Federal Order Requiring Testing for and Reporting of Highly Pathogenic Avian Influenza in Livestock issued on April 24, 2024, remains in effect. It can be found on the USDA website:

[www.aphis.usda.gov/sites/default/files/dairy-federal-order.pdf](http://www.aphis.usda.gov/sites/default/files/dairy-federal-order.pdf)

A plan for managing lactating dairy cattle (LDC), including the handling of milk collected at the exhibition facility, should be in place for all fairs and shows where LDC will be on the premises.

1. Tuberculosis (TB) and Brucellosis testing is not required for animals from [TB-Accredited and Brucellosis-Free States](https://www.aphis.usda.gov/livestock-poultry-disease/status-eradication-programs) (which can be found at <https://www.aphis.usda.gov/livestock-poultry-disease/status-eradication-programs>) and from in-state animals. If the exhibitor's state is not TB-Accredited or Brucellosis-Free, then the exhibitor must call the Massachusetts Division of Animal Health for entry requirements (617-626-1795 or 857-348-3922). All animals must be free of the following diseases and conditions: foot rot, mange, pinkeye, ringworm, warts, cowpox, and open or draining wounds.
2. While not required, it is strongly recommended that all cattle be currently vaccinated against rabies.
3. Note: The Big E is requiring RFID official identification tags for all cattle entering The Big E Fairgrounds premises in 2026. Other fairs may add this requirement. Contact the fair office with questions.

### **Poultry Specific Information**

See M. G. L. c. §§2, 129, and 330 CMR 5.02.

**Important:** *Waterfowl may not be exhibited, shown, or otherwise gathered or co-mingled at in-person events in Massachusetts until April 30, 2026, unless extended by the Director of Animal Health, per MDAR Order 1-17-AHO-25.*

1. No poultry will be admitted to a fairground until it has been individually inspected.
2. All poultry must be free of visual evidence of the following diseases: infectious bronchitis, coryza, pullorum-typhoid, fowl-pox, external parasites, and laryngotracheitis.
3. Each bird must be accompanied by written proof (ID card or test report) that the breeding flock was blood-tested negative for pullorum-typhoid within one year prior to entry date.
4. Birds from quarantined states will not be permitted entry.
5. All birds over 16 weeks of age as of January 1, 2026, shall be individually leg banded with a state leg band. This includes out-of-state exhibitors.
6. No bird vaccinated for laryngotracheitis within thirty (30) days of the fair will be admitted.

### **Goat Specific Information**

See M. G. L. c. 129 §§2, 9 CFR 79.6 and Massachusetts Emergency Order 1-AHO-06.

1. Tuberculosis (TB) and Brucellosis testing is not required for animals from TB-Accredited and Brucellosis-Free States (<https://www.aphis.usda.gov/livestock-poultry-disease/status-eradication-programs>) and in-state animals being exhibited in MA.
2. All goats and kids presented, regardless of age, must be individually listed and identified on the health certificate.
3. All goats must be free of visual evidence of the following diseases and conditions:
  - a. Foot rot, mange, pinkeye, ringworm, warts, pox, and open or draining wounds.
  - b. All goats must also be free of soremouth and scrapie exposure.
4. Based on the Federal Scrapie Eradication Program (FSEP), goats and sheep of any age or sex brought to a show or exhibition from either out of state or within state must possess a USDA official individual identification tag or registry tattoo accompanied by current registration papers consistent with the requirements of the FSEP and the Massachusetts Emergency Order 1-AHP-06. Information is available from USDA-APHIS at 508-363-2290.

### **Camelid Specific information**

See M.G.L. c. 129 §2, M.G.I. c. 131, §23, 321 CMR 9.02.

1. Tuberculosis (TB) and Brucellosis testing is not required for animals from TB-Accredited and Brucellosis-Free States and from in-state animals. If the exhibitor's state is not TB-Accredited or Brucellosis-Free, then the exhibitor must call the Massachusetts Division of Animal Health for entry requirements (617-626-1795 or 857-348-3922).

### **Swine Specific Information**

See M.G.L. c. 129 §14E, 330 CME 11.4(2). 9 CFR 71.19.

1. All swine must be identified by an official ear tag or registration.
2. Swine must be free of visual evidence of the following diseases and conditions: erysipelas, atrophic rhinitis, mange, and open or draining wounds.
3. Exhibited swine may not have been fed raw garbage.
4. No person shall import into Massachusetts from outside the state any swine which have been pseudorabies vaccinated. M.G.L. c. 129 §14E.
5. All swine shall originate from qualified pseudorabies-free herds or herds in qualified pseudorabies free states only.

### **Sheep Specific Information**

See 9 CFR 79 and Massachusetts Emergency Order 1-AHO-06.

1. No sheep will be allowed entry from flocks in which Scrapie has been diagnosed or in which animals are under surveillance for Scrapie during the previous 18 months. Based on the Federal Scrapie Eradication Program (FSEP), goats and sheep of any age or sex brought to show or exhibition from either out of state or within state must possess a USDA official individual identification tag or registry tattoo accompanied by current registration papers consistent with the requirements of the FSEP and the Massachusetts Emergency Order 1-AHO-06. Information is available from USDA-APHIS at 508-363-2290.
2. No sheep will be permitted entry from flocks in which soremouth has existed or in which soremouth vaccine had been administered in the previous sixty (60) days.
3. Sheep must be free from visual evidence of foot rot, soremouth, pinkeye, ringworm, and open or draining wounds.
4. While not required, it is strongly recommended that sheep be currently vaccinated against rabies.

### **Equine Specific Information**

See M.G.L. c. 128 §§2C. 44. 330 CMR 16.05.

1. All equines entering a Massachusetts (MA) fairground originating from both within or outside Massachusetts must be accompanied by a valid health certificate and have a record of negative EIA (Coggins) test within the last 12 months.
2. All equines must be free of visual evidence of the following diseases and conditions: mange, ringworm, soring, strangles, and open or draining wounds.
3. While not required, it is strongly recommended that all equines be vaccinated for rabies, tetanus, EEE and NV within one year of the fair.

### **Dog and Cat Specific Information**

See M.G.L. c. 129 §39G.

1. All dogs and cats must be free of visual evidence of the following diseases: kennel cough, distemper, hepatitis, parvo, ringworm, and mange.
2. All dogs and cats must be accompanied by a valid or current vaccination certificate for rabies.

**Contact the Massachusetts Division of Animal Health at 857-348-3922 or 617-626-1795 for further information.**

### **MEMORANDUM**

TO: Accredited Veterinarians  
Exhibitors and Show Inspectors

FROM: New England State Veterinarians  
CT Dr. Thamus Morgan  
MA Dr. Lorraine O'Connor  
ME Dr. Taryn Pearson

NH Dr. Mark Prescott  
RI Dr. Scott Marshall  
VT Dr. Kaitlynn Levine

SUBJECT: **2026 New England Fairs and Shows**  
DATE: March 27, 2026

### **Avian Influenza (HPAI) Notices:**

Due to the continuing US outbreak of Highly Pathogenic Avian Influenza (HPAI) in domesticated and wild birds and in dairy cattle, Animal Health Officials from all six New England States are united in advising the following for agricultural fairs, competitions, exhibitions, shows, swaps, or other in-person events that encourage the gathering or co-mingling of birds and/or cattle:

### **Avian species**

The New England State Veterinarians strongly discourage the exhibition of domestic and wild waterfowl species and may recommend delaying or canceling domestic fowl or poultry shows. If events are held, best practices for biosecurity should be implemented. Waterfowl exhibitions are currently banned in MA through April 30, 2026, which may be extended.

## **Bovine species**

The New England State Veterinarians strongly discourage the exhibition of any bovines, including both dairy and beef cattle, that have been present in any state at the time that state had a current outbreak of HPAI in cattle. Bovines that have been shipped from currently affected states in 2026 should not be allowed on the premises of New England fairs or shows. Moving to or from an affected state for any reason will void any New England Fair and Show Season Official Certificates of Veterinary Inspection (OCVIs) that have been issued for such cattle for the remainder of the 2026 season.

The states currently affected by HPAI in cattle can be found on the USDA website:

<https://www.aphis.usda.gov/livestock-poultry-disease/avian/avian-influenza/hpai-detections/hpai-confirmedcases-livestock>

The USDA APHIS Veterinary Services Federal Order Requiring Testing for and Reporting of Highly Pathogenic Avian Influenza in Livestock issued on April 24, 2024, remains in effect. It can be found on the USDA website: [www.aphis.usda.gov/sites/default/files/dairy-federal-order.pdf](http://www.aphis.usda.gov/sites/default/files/dairy-federal-order.pdf)

A plan for managing lactating dairy cattle (LDC), including the handling of milk collected at the exhibition facility, should be in place for all fairs and shows where LDC will be on the premises.

## **2026 NE EXHIBITION HEALTH CERTIFICATE RULES**

### **All species**

- Animals of all species susceptible to HPAI are potentially subject to quarantine as ordered by the State Veterinarian if HPAI is detected on a premises where the animal is or was exhibited.
- If HPAI is detected in cattle in any New England State, the Agreement between the New England State Veterinarians to allow the use of a single, fair and show season OCVI for New England animals being exhibited in New England will be voided. All exhibited animals would need to be accompanied by an OCVI issued by an accredited veterinarian within 30 days of being checked in at the show premises and/or other state import requirements.
- Best biosecurity practices for all species should be implemented.

Contact the state where animals will be exhibited for the latest updated information.

## **2026 Fair and Show New England Health Certificates**

For the 2026 Show and Fair Season, domesticated animals from New England states (CT, ME, MA, NH, RI, and VT) may be exhibited at fairs and shows in New England throughout the fair and show season using a single Official Certificate of Veterinary Inspection (OCVI) that meet the requirements outlined in this memo.

### **General Requirements (all NE states):**

- A single OCVI from the animals' home state may be completed for travel to and from the New England states in which the animals will be exhibited.
- Multiple animals of the same species may be listed on one OCVI with appropriate individual IDs and descriptions.
- Animals of different species may not be listed on the same official health certificate.
- An itinerary of the names and locations for each New England fair or show at which owner expects to show the listed animals and the dates when each animal is expected to be on each site, must be prepared by the owner and presented to the veterinarian at the time the OCVI is written.
  - o A copy of this planned itinerary must be attached to the OCVI (import and export) for it to be used for more than one fair or show.
    - That proposed list should be signed by the veterinarian and the owner/ exhibitor and reference the relevant OCVI number(s).
    - Electronic OCVIs must include this list of exhibition names, addresses, and dated in the "remarks and comments" section
- The first show or fair where the listed animals will be exhibited will be the Consignee on the OCVI, as shown here:
  - New England Fair Season
  - Street address of first fair or show
  - See Exhibition List

- Exhibitors must keep an accurate list of the show locations and dates when their animals were physically on show/fairgrounds. This record must be available to fair inspectors at each inspection and check-in.
- Any animal listed on an OCVI that becomes sick must remain home. Any animal that is refused entry to any exhibition during 2026 for health reasons must have a new OCVI issued by an accredited veterinarian within 30 days of the next fair or show where it will be exhibited.
- Any New England state may end their participation in this agreement and revert to the standard published requirements for livestock imports in the state at any time, in the event of foreign animal disease outbreak or changes to state legislation.

**State-specific requirements:**

- **CT**
  - o Fair and Show OCVIs may be issued and used between January 1 and October 31, 2026
  - o An importation permit for exhibition animals is required for cattle, camelids, goats, sheep, and swine
  - o Testing and vaccinations are required for some species
  - o Contact CT Dept. of Agriculture for permits and requirements at 860-713-2504 or [AGR.SVCS@ct.gov](mailto:AGR.SVCS@ct.gov)
- **MA**
  - o Fair and Show OCVIs may be issued and used between January 1 through October 31, 2026
  - o Contact MDAR at 857-348-3922 or 617-626-1795 with questions
- **ME**
  - o Fair and Show OCVIs may be issued and used between January 1 and October 31, 2026
  - o An importation permit for exhibition animals is required for some species  
[https://www.maine.gov/dacf/ahw/animal\\_health/livestock\\_importation.shtml](https://www.maine.gov/dacf/ahw/animal_health/livestock_importation.shtml)
  - o Contact ME State Veterinarian's Office at 207-287-3701 with questions
- **RI**
  - o Fair and Show OCVIs may be used between January 1 and October 31, 2026
  - o Contact the RI State Veterinarian's Office at 401-537-4281 with questions
- **NH**
  - o Fair and show OCVIs may be issued on or after April 1, 2026 and used for participating NH fairs and shows from July 1 through October 31, 2026
  - o Contact NH State Veterinarian's Office (603) 271-2404 for permits
- **VT**
  - o Fair and show OCVIs may be issued on or after April 1, 2026, and used for participating VT fairs and shows from May 1 through October 31, 2026
  - o Contact the VT Animal Health Office at 802-828-2421 for specific import requirements and permits

**Sick or exposed animals may not be shipped anywhere.**

\*\*\*\*\*



# HAMPDEN COUNTY 4-H / YOUTH FAIR

## Livestock General Rules

1. Read Fair General Rules and 2026 Animal Health Rules for Fairs and Shows.
2. **AGE REQUIREMENTS** - No child under 5 years old as of January 1, 2026 is allowed to exhibit.
  - ☘ **Cloverbud** - Youth 5 to 7 years old as of January 1, 2026 will enter non-judgmental clinics or classes with the same ribbon only.
  - ☘ **Junior** - Youth 8 to 13 years old as of January 1, 2026.
  - ☘ **Senior** - Youth 14 to 18 years old as of January 1, 2026.
3. **EXHIBITS** - All departments will be open to receive animals from 7:00 - 9:00 a.m. on July 25<sup>th</sup>. **All animals must remain in place until 5:00 p.m. or after the awards ceremony, whichever is later on July 25<sup>th</sup>.**
4. Dairy, sheep, goat, and beef exhibitors may enter more than one entry per class but are limited to two premiums per class.
5. Showmanship classes may be divided based on age and/or experience of the exhibitor at the discretion of the superintendent. A novice is a junior or senior exhibitor who has not shown before in competition. Cloverbud years are not applicable.
6. All animals must be shown by the owner or lessee, unless there is more than one animal in a class. If more than one entry, other animals must be **shown by youth in proper show attire**. Registration papers must indicate an individual, not a farm name, unless the exhibitor is leasing the animal. Those who have a *4-H Lease Form* must have the form in their possession.
7. **DRESS CODE:** Show clothes must be worn for all classes in Divisions 1 through 8A. High heels are not allowed. If skirts are allowed, the length must be to the middle of the knee. Refer to the individual divisions for additional appropriate dress attire. Superintendents and judges have the authority to disqualify an exhibitor if they deem the exhibitor's attire is inappropriate.
8. No adults are allowed to work on animals or prepare animals for show at any time.
9. **DISPLAY AREA** - Youth must be present and doing most of the work when setting up the display area on the day of the show or earlier. **Parents and adults are allowed to assist with bedding, BUT youth must be present and helping.** Any display signs must be set up by youth only.
10. **No exhibitor or animal will be allowed to stay overnight.**
11. **No animals are allowed in the food aisle.**
12. **SALE OF RABBITS OR LIVESTOCK** - The Hampden County 4-H/Youth Fair Association will allow the sale of rabbits by 4-H members only if they are exhibiting at the fair and have registered with the Rabbit Superintendent. The Fair Association prohibits the sale of equipment, products, or any other animals at the Hampden County 4-H/Youth Fair.
13. All animal exhibitors are responsible for cleaning their own area and the show area by removing bedding, taking down pens, and loading the equipment onto trucks. **Exhibitors must bring their own brooms, shovels, or other equipment for cleanup.**
14. All animal exhibitors must check with the division superintendent before leaving the fairgrounds. Failure to do so will result in forfeiting the premium money.

# **DIVISION 1 - Dairy**

Superintendents: Bridget Rida ([bphelon@hotmail.com](mailto:bphelon@hotmail.com)) and Ashley Owen

- ✿ Read Fair General Rules, 2026 Animal Health Rules for Fairs and Shows, and Livestock General Rules.
- ✿ Exhibitors **must have papers with them** proving animals are from accredited herds or passed a TB test.
- ✿ RFID tags are required on all animals.
- ✿ Animals must be owned or leased by May 1, 2026.
- ✿ No change in dairy entries accepted after 9:00 a.m. on July 25, 2026.
- ✿ All milking animals must be milked dry in the morning milking.
- ✿ A livestock card must be on display above each animal. The 4-H Fair Association will provide the cards.
- ✿ All exhibitors in the Dairy Division are required to wear the following while showing:
  - Girls:** Clean, white shirt or T-shirt; white pants; no skirt or shorts allowed.
  - Boys:** Clean, white shirt or T-shirt; white pants; no shorts allowed.
- ✿ All exhibitors must wear boots or hard toed closed shoes.
- ✿ Exhibitor must be able to show and control animal in the ring or they may be asked by the judge to leave the ring and premium money will be forfeited.

## **Premium Points: 50 - 45 - 40 - 35 - 30 - 25 - 20**

- 101 Spring Heifer Calf - Mar. 1, 2026 - May 31, 2026
- 102 Winter Heifer Calf - Dec. 1, 2025 - Feb. 28, 2026
- 103 Fall Heifer Calf - Sept. 1, 2025 - Nov. 30, 2025
- 104 Summer Yearling Heifer - June 1, 2025 - Aug. 31, 2025
- 105 Spring Yearling Heifer - Mar. 1, 2025 - May 31, 2025
- 106 Winter Yearling Heifer - Dec. 1, 2024 - Feb. 28, 2025
- 107 Fall Yearling Heifer - Sept. 1, 2024 - Nov. 30, 2024
- 108 Dry Cow - any age
- 109 Cow (2 yrs. and under 3) - Sept. 1, 2023 - Aug. 31, 2024
- 110 Cow (3 yrs. and under 4) - Sept. 1, 2022 - Aug. 31, 2023
- 111 Cow (4 yrs. and under 5) - Sept. 1, 2021 - Aug. 31, 2022
- 112 Aged Cow (over 5 yrs.) - born before Sept. 1, 2021
- 114 Get of Sire - 3 animals with same sire
- 115 Produce of Dam - 2 animals of same dam
- 116 Dam and Daughter
- 117 Best Bred and Owned – must be bred and owned by exhibitor; any age;  
each breed shown separately
- 118 Best 3 Females - bred and owned by one exhibitor; any age
- 119 Exhibitor's Herd - 3 animals of same breed; any age
- 120 Club Herd (5 animals, owned by at least 2 different exhibitors) - maximum of 2 herds per club; no exhibitor may show animals in more than one herd, i.e. must have 4 exhibitors - 2 showing in one herd and 2 different exhibitors showing animals in the second herd. Cloverbuds may be included. **Herds must be registered with the Fair Secretary before the show begins and entered with the leader's name and address.**
- 122 Costume Class - just for fun (ribbon only)

## **Add letter to Classes 101 - 119**

- A Ayrshire**
- B Brown Swiss**
- C Guernsey**
- D Holstein**
- E Jersey**
- F Milking Shorthorn**
- G Grade**



## **Showmanship Classes: All exhibitors must enter Fitting and Showmanship.**

- 125 Professional Fitting and Showmanship - exhibitor who has won a Senior Fitting and Showmanship Class. Class will be held only if 3 or more entries, otherwise it will be combined with Senior Fitting and Showmanship.
- 126 Senior Fitting and Showmanship - exhibitor 16 to 18 years old as of Jan. 1, 2026
- 127 Intermediate Fitting and Showmanship - exhibitor 12 to 15 years old as of Jan. 1, 2026
- 128 Junior Fitting and Showmanship - exhibitor 8 to 11 years old as of Jan. 1, 2026
- 129 Novice Fitting and Showmanship - Junior or Senior exhibitor who has not shown before

## **DIVISION 1 - Dairy (cont.)**

**Cloverbud Clinics:** Exhibitor 5 to 7 years old as of Jan. 1, 2026

130 Cloverbud Exhibitor Clinic - 1 animal of any age or breed; all shown in the same class

131 Cloverbud Showmanship Clinic

### **Herdmanship Award**

Award selection is based upon how well the exhibitor keeps his/her area neat and clean, cares for animals, and cooperates with the superintendent, judge, and other exhibitors.

\*\*\*\*\*

## **DIVISION 2 - Beef**

Superintendents: Anna Demko and Elena Lynch

☘ Read Fair General Rules, 2026 Animal Health Rules for Fairs and Shows, and Livestock General Rules.

☘ Animals must be owned or leased by May 1, 2026.

☘ List breed and age of animal on entry form.

☘ RFID tags are required on all animals.

☘ A livestock card must be on display above each animal. The 4-H Fair Association will provide the cards.

☘ Classes may be subdivided at the discretion of the Superintendent.

☘ All female beef, of the same age, will compete together unless more than 3 entries in one breed.

☘ All exhibitors in the Beef Division are required to wear the following while showing:

**Girls:** Clean, light colored or Western shirt; dark jeans; no skirt or shorts allowed.

**Boys:** Clean, light colored or Western shirt; dark jeans; no shorts allowed.

All exhibitors must wear boots or hard toed closed shoes.

☘ Next class should be on deck when the previous class enters the ring.

**Premium Points: 50 - 45 - 40 - 35 - 30 - 25 - 20**

**Add letter to Classes 201 - 223**

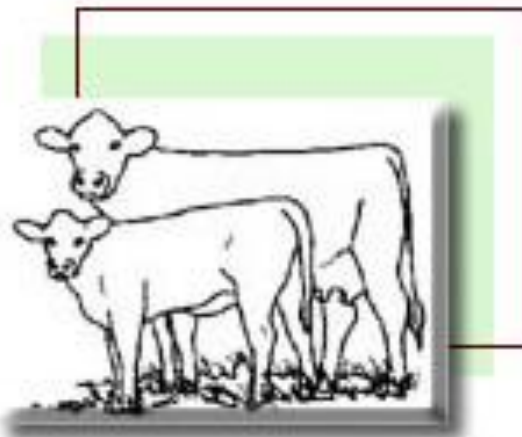
- A** Angus
- B** Hereford
- C** Simmental
- D** Belted Galloway
- E** Other
- F** Crossbreed

### **Female**

201 Summer Calf - born Apr., May, or Jun. 2026

202 Junior Calf - born Jan., Feb., or Mar. 2026

203 Senior Calf - born Sept., Oct., Nov., or Dec. 2025



## **DIVISION 2 - Beef (cont.)**

- 204 Summer Yearling - born May, Jun., Jul., or Aug. 2025
- 205 Junior Yearling - born Jan., Feb., Mar., or Apr. 2025
- 206 Senior Yearling - born Sept., Oct., Nov., or Dec. 2024
- 207 Cow - 2 years old
- 208 Cow - older than 2 years old
- 209 Champion Female - ribbon only class

### **Male**

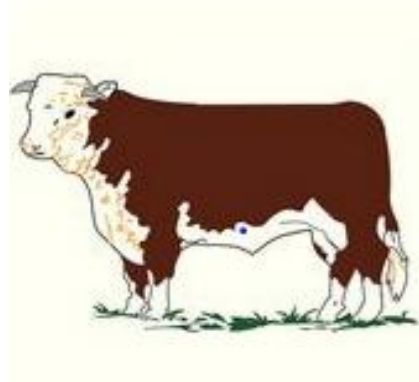
Bull Calf - born between January 2026 and June 2026

- 211 Junior Bull Calf - born Jan., Feb., or Mar. 2026
- 212 Spring Bull Calf - born Apr., May, or Jun. 2026

### **Market Steer**

All steers will be weighed upon arrival by the superintendent.

- 213 Prospect Steer – under 900 pounds
- 214 Light Weight Steer - 900 to 1099 pounds
- 215 Medium Weight Steer - 1100 to 1299 pounds
- 216 Heavy Weight Steer - 1300 pounds and heavier
- 217 Champion Steer - ribbon only class



### **Groups**

- 219 Cow and Calf Pair - cow with latest natural calf
- 220 Get of Sire - 3 animals with same sire
- 221 Produce of Dam - 2 animals; the produce of one dam
- 222 Exhibitor's Herd - 3 animals; same breed

### **Costume** (ribbon only)

- 223 Costume Class - just for fun

### **Showmanship Classes: All exhibitors must enter Fitting and Showmanship.**

- 225 Professional Fitting and Showmanship - exhibitor who has won a Senior Fitting and Showmanship Class. Class will be held only if 3 or more entries, otherwise it will be combined with Senior Fitting and Showmanship.
- 226 Senior Fitting and Showmanship - exhibitor 14 to 18 years old as of Jan. 1, 2026
- 227 Junior Fitting and Showmanship - exhibitor 8 to 13 years old as of Jan. 1, 2026
- 228 Novice Fitting and Showmanship - Junior or Senior exhibitor who has not shown before

### **Cloverbud Clinics: Exhibitor 5 to 7 years old as of Jan. 1, 2026**

- 230 Cloverbud Exhibitor Clinic - 1 animal of any age or breed; all shown in the same class
- 231 Cloverbud Showmanship Clinic

### **Herdmanship Award**

Award selection is based upon how well the exhibitor keeps his/her area neat and clean, cares for animals, and cooperates with the superintendent, judge, and other exhibitors.

## **DIVISION 2A - Working Steer**

Superintendent:

- ✿ Read Fair General Rules, 2026 Animal Health Rules for Fairs and Shows, and Livestock General Rules.
- ✿ Animals must be owned or leased by June 1, 2026.
- ✿ List breed and age of animal on entry form.
- ✿ RFID tags are required on all animals.
- ✿ A livestock card must be on display above each animal. The 4-H Fair Association will provide the cards.
- ✿ All exhibitors in the Working Steer Division are required to wear the following while showing:
  - Girls:** Clean, light colored shirt or T-shirt; tan, green, or white pants or skirt; no shorts allowed.
  - Boys:** Clean, light colored shirt or T-shirt; tan, green, or white pants; no shorts allowed.
- ✿ All exhibitors must wear boots or hard toed closed shoes.
- ✿ All animals must be shown by the owner or lessee.
- ✿ **Classes will be divided based upon age and / or ability at the discretion of the superintendent or judge on the day of the show.**

**Premium Points: 50 - 45 - 40 - 35 - 30 - 25 - 20**

- 250 Stone Boat
- 251 Cart
- 252 Obstacle Course

### **Ribbon Only Classes**

- 253 Trained Steers
- 254 Costume - just for fun

**Showmanship Classes: All exhibitors must enter Fitting and Showmanship.**

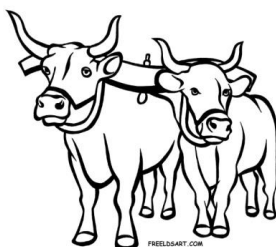
- 260 Novice Fitting and Showmanship - Junior or Senior exhibitor who has not shown before
- 261 Junior Fitting and Showmanship - exhibitor 8 to 13 years old as of Jan. 1, 2026
- 262 Senior Fitting and Showmanship - exhibitor 14 to 18 years old as of Jan. 1, 2026

**Cloverbud Clinics: Exhibitor 5 to 7 years old as of Jan. 1, 2026**

- 270 Cloverbud Exhibitor Clinic - a young pair of steers; any breed; with adult help or supervision; all shown in the same class
- 271 Cloverbud Showmanship Clinic

### **Herdmanship Award**

Award selection is based upon how well the exhibitor keeps his/her area neat and clean, cares for animals, and cooperates with the superintendent, judge, and other exhibitors.



# **DIVISION 3 - Sheep**

Superintendent:

- ✿ Read Fair General Rules, 2026 Animal Health Rules for Fairs and Shows, and Livestock General Rules.
- ✿ Animals must be owned or leased by June 1, 2026.
- ✿ Exhibitor must furnish papers showing proof of ownership or lease. Papers must indicate an individual, not a farm name.
- ✿ All purebreds must have ear tags. Papers will be checked with tags.
- ✿ A livestock card must be on display above each animal. The 4-H Fair Association will provide the cards.
- ✿ **Please indicate the number of pens required on your entry form. Standard pen size is 6 x 6 feet.**
- ✿ All animals shown in group classes must be shown in individual classes.
- ✿ Market lambs may be divided into two classes by weight the day of the show. Market lambs must be shorn after July 1, 2026.
- ✿ All exhibitors in the Sheep Division are required to wear the following while showing:
  - Girls:** Clean, light colored or Western shirt; dark jeans; No skirt or shorts allowed.
  - Boys:** Clean, light colored or Western shirt; dark jeans; No shorts allowed.
- All exhibitors must wear closed toe / closed heel shoes or sneakers at all times.

## **Shepherd's Award**

A Shepherd's Contest is held on the day of the fair. Award selection is based upon how well the exhibitor keeps his/her area clean, cares for animals, and cooperates with fair superintendents and other exhibitors.

## **Gentle Hands Award**

An "Gentle Hands" award will be presented to any exhibitor at the end of the day. The judge will determine the award recipient based upon observations during the day.

**Dates for dividing Junior and Senior lambs are:**

**Add letter to Classes 301 - 316**

<b>January 1</b>	Border Leicester	Natural Colored
	Cotswold	Oxford
	Dorset	Shropshire
	Hampshire	Suffolk
	Grade	Tunis
	Lincoln	Any other purebred - meat
		Any other purebred - wool

<b>February 1</b>	Southdown
<b>March 1</b>	Cheviot

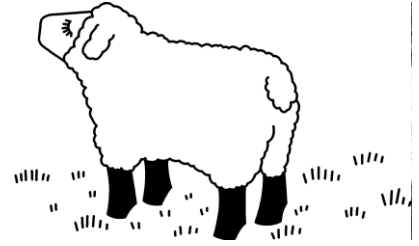
<b>A</b>	<b>Border Leicester</b>
<b>B</b>	<b>Cheviot</b>
<b>C</b>	<b>Cotswold</b>
<b>D</b>	<b>Dorset</b>
<b>E</b>	<b>Hampshire</b>
<b>F</b>	<b>Lincoln</b>
<b>G</b>	<b>Natural Colored</b>
<b>H</b>	<b>Oxford</b>
<b>I</b>	<b>Shropshire</b>
<b>J</b>	<b>Southdown</b>
<b>K</b>	<b>Suffolk</b>
<b>L</b>	<b>Tunis</b>
<b>M</b>	<b>Grade</b>
<b>N</b>	<b>Any other purebred - meat</b>
<b>O</b>	<b>Any other purebred - wool</b>

**Premium Points: 25 - 20 - 15 - 10 - 5**

301	Yearling Ram - purebred under 2 years old
302	Senior Ram Lamb - purebred; must not show yearling teeth
303	Junior Ram Lamb - purebred; must not show yearling teeth
304	Pair of Ram Lambs
305	Champion Ram - ribbon only
306	Aged Ewe - 2 years old or older; must show more than 4 permanent incisors
307	Yearling Ewe - over 1 year old; must have yearling or 2 year old mouth

## **DIVISION 3 - Sheep (cont.)**

- 308 Pair of Yearling Ewes
- 309 Senior Ewe Lamb - must not show yearling teeth
- 310 Junior Ewe Lamb - must not show yearling teeth
- 311 Pair of Ewe Lambs
- 312 Champion Ewe - ribbon only
- 313 Get of Sire - 3 offspring of same ram; any age; any sex
- 314 Produce of Dam - 2 offspring of same dam; any age, any sex
- 315 4-H Exhibitor's Flock - 1 ram and 4 ewes
- 316 Breeder's Flock - 1 ram, 2 ewes; all bred and owned by exhibitor
- 317 Novice Market Lamb - under 1 year old; Junior or Senior exhibitor showing for the 1st year
- 318 Market Lamb - under 1 year old
- 319 Pair of Market Lambs - under 1 year old
- 320 Champion Market Lamb - ribbon only
- 321 Supreme Champion Ram - ribbon only
- 322 Supreme Champion Ewe - ribbon only
- 323 Supreme Champion of Show - ribbon only
- 324 Best Fleece
- 325 Obstacle Course - ribbon only



### **Showmanship Classes: All exhibitors must enter Fitting and Showmanship.**

- 330 Novice Fitting and Showmanship - Junior or Senior exhibitor who has not shown before
- 331 Junior Fitting and Showmanship - exhibitor 8 to 10 years old as of Jan. 1, 2026
- 332 Intermediate Junior Fitting and Showmanship - exhibitor 11 to 13 years old as of Jan. 1, 2026
- 333 Senior Fitting and Showmanship - exhibitor 14 to 18 years old as of Jan. 1, 2026

### **Cloverbud Clinics: Exhibitor 5 to 7 years old as of Jan. 1, 2026**

- 336 Cloverbud Exhibitor Clinic - 1 animal of any age or breed; all shown together in the same class
- 337 Cloverbud Showmanship Clinic

## **Lead Line and Wool Competition**

**Saturday, July 25<sup>th</sup> at 3:30 p.m.**



### **Competition Rules:**

- ☘ Contestant must have an interest in promoting sheep and wool.
- ☘ Competition is open to both males and females.
- ☘ Contestant must lead a sheep, clean, and fitted for show on a halter. **The contestant does not have to own the sheep**, but may borrow one.
- ☘ The outfit modeled by the contestant **or** a major part of the outfit, must be made of 100% wool. Bonus points are given if the contestant constructed his/her own garment.

**All Junior and Senior participants will be awarded 10 Premium Points. Awards will be presented to the best overall Junior contestant and the best overall Senior contestant.**

- 340 Cloverbud sheep lead line and wool competition - exhibitor 5 to 7 years old as of Jan. 1, 2026
- 341 Junior sheep lead line and wool competition - exhibitor 8 to 13 years old as of Jan. 1, 2026
- 342 Senior sheep lead line and wool competition - exhibitor 14 to 18 years old as of Jan. 1, 2026

## **DIVISION 4 - Swine**

Superintendent:

- ✿ Read Fair General Rules, 2026 Animal Health Rules for Fairs and Shows, and Livestock General Rules.
- ✿ Animals must be owned or leased by June 1, 2026.
- ✿ A veterinarian's health certificate must be presented before animals are unloaded.
- ✿ List age, breed, and sex of animal on entry form.
- ✿ **Please indicate the number of pens required on the entry form. Standard pen size is 6 x 6 feet.**
- ✿ A livestock card must be on display above each animal. The 4-H Fair Association will provide the cards.
- ✿ All exhibitors in the Swine Division are required to wear the following while showing:
  - Girls:** Clean, white shirt or T-shirt; tan or white pants. No shorts allowed.
  - Boys:** Clean, white shirt or T-shirt; tan or white pants. No shorts allowed.
- ✿ All exhibitors must wear closed toe / closed heel shoes or sneakers at all times.
- ✿ Classes will be divided based upon age and / or ability at the discretion of the superintendent or judge on the day of the fair.
- ✿ Each exhibitor must clean up pens at release time or forfeit premiums.

### **Premium Points for Classes 401 - 417: 25 - 20 - 15 - 10 - 5**

- 401 Boar - 1 year or older
- 402 Boar - born Oct .1, 2025 - Dec. 31, 2025
- 403 Boar - born Jan 1, 2026 - Mar. 31, 2026
- 404 Boar - born after April 1, 2026
- 405 Sow - 1 year or older lactating
- 406 Sow - 1 year or older non-lactating)
- 407 Gilt - born Oct .1, 2025 Dec. 31, 2025
- 408 Gilt - born Jan 1, 2026 - Mar. 31, 2026
- 409 Gilt - born April 1, 2026 - June 30, 2026
- 410 Gilt - born after July 1, 2026
- 411 Breeding Herd - 1 boar and 3 females
- 412 Sow and un-weaned litter
- 413 Heavy Market Hog - 251 lb. and up
- 414 Middle Market Hog - 201 to 250 lb.
- 415 Light Market Hog - 140 to 200 lb.
- 416 Heavy Feeder Pig - 51 to 139 lb.
- 417 Light Feeder Pig - 50 lb. and under
- 418 Champion Boar
- 419 Champion Female



### **Custom Class** (ribbon only)

- 420 Costume Class - just for fun

### **Showmanship Classes:** All exhibitors must enter Fitting and Showmanship.

- 420 Novice Fitting and Showmanship - Junior or Senior exhibitor who has not shown before
- 421 Junior Fitting and Showmanship - exhibitor 8 to 10 years old as of Jan. 1, 2026
- 422 Intermediate Junior Fitting and Showmanship - exhibitor 11 to 13 years old as of Jan. 1, 2026
- 423 Senior Fitting and Showmanship - exhibitor 14 to 18 years old as of Jan. 1, 2026

### **Cloverbud Clinics:** Exhibitor 5 to 7 years old as of Jan. 1, 2026

- 426 Cloverbud Exhibitor Clinic - 1 animal of any age or breed; all shown together in the same class
- 427 Cloverbud Showmanship Clinic

## **DIVISION 5 - Goat**

Superintendent: Randy Brown

- ✿ Read Fair General Rules, 2026 Animal Health Rules for Fairs and Shows, and Livestock General Rules.
- ✿ **The goat area will receive animals from 8:00 to 9:00 a.m. on the morning of the show.**
- ✿ No horned animals will be allowed (exceptions will be made for market goats and fiber goats - horns must be tipped). No bucks allowed.
- ✿ Exhibitors must provide verification of ownership or lease in the exhibitor's name by June 1, 2026, except kids must be raised and cared for from birth if born after June 1, 2026.
- ✿ **Please indicate the number of animal pens needed on the entry form. Standard pen size is 6 x 6 feet.**
- ✿ A veterinarian's health certificate must be presented before animals are unloaded. All tattoos will be checked. Registration papers are required for all does to be shown in Dairy and Meat Goat Classes.
- ✿ A livestock card must be on display above each animal. The 4-H Fair Association will provide the cards.
- ✿ No pre-show milk out required, but over bagged animals may be penalized in placing at the discretion of the judge and/or superintendent.
- ✿ Cloverbuds will be allowed to show only one animal and will show only in the two designated Cloverbud classes. Cloverbuds may not show a horned animal. Cloverbuds do not need to own or have a written release for the animal shown to participate.
- ✿ All exhibitors in the Goat Division are required to wear the following while showing:
  - Girls:** White shirt or T-shirt; tan or white pants, skirt or shorts
  - Boys:** White shirt or T-shirt; tan or white pants or shortsAll exhibitors must wear closed toe / closed heel shoes or sneakers at all times.
- ✿ Each exhibitor must clean up pens at release time or forfeit premiums. Bring your own brooms, shovels, pitchforks, etc. for cleanup.
- ✿ All exhibitors must enter Showmanship. Exhibitors must fit their own animals. Their showmanship animal must also be shown in a single goat class. All goats shown in a Specialty Class must also have been shown in an individual class.

**Premium Points: 25 - 20 - 15 - 10 - 5 (Dairy, Meat, Fiber only)**

**SHOWMANSHIP - All exhibitors must enter Showmanship.**

### **Dairy Showmanship (including Dairy type goats)**

- 501 Senior Showmanship - exhibitor 14 to 18 years old as of Jan. 1, 2026
- 502 Junior Showmanship - exhibitor 8 to 13 years old as of Jan. 1, 2026
- 503 Novice Showmanship - Junior or Senior exhibitor showing for the 1st year

### **Non - Dairy Showmanship**

- 504 Senior Showmanship - exhibitor 14 to 18 years old as of Jan. 1, 2026
- 505 Junior Showmanship - exhibitor 8 to 13 years old as of Jan. 1, 2026
- 506 Novice Showmanship - Junior or Senior exhibitor showing for the 1st year

### **Cloverbud Showmanship** - exhibitor 5 to 7 years old as of Jan. 1, 2026

- 507 Cloverbud Showmanship Clinic
- 508 Cloverbud Clinic Breed Class - 1 animal of any age or breed; all shown in the same class

## **DIVISION 5 - Goat (cont.)**

### **DAIRY GOAT BREEDS**

Enter the breed letter with the class number.

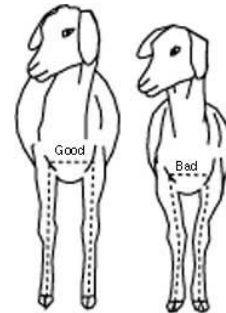
**A = Alpine**  
**L = LaMancha**  
**N = Nubian**  
**O = Oberhasli**  
**S = Saanen**

**T = Toggenburg**  
**ND = Nigerian Dwarf**  
**R = Recorded Grade**  
**SA = Sable**  
**B = Any other dairy type breed**

- |   |  |
|---|--|
| 510 Junior Doe Kid - 1 to 2 months                | 515 Junior Doe Milker - 2 to under 3 years   |
| 511 Senior Doe Kid - 3 to 5 months                | 516 Intermediate Milker - 3 to under 5 years |
| 512 Doeling - 6 months to under 1 year            | 517 Senior Doe Milker - 5 to under 7 years   |
| 513 Yearling - 1 to under 2 yrs.; never freshened | 518 Aged Doe - over 7 years                  |
| 514 Yearling - 1 to under 2 years in milk         | 519 Wether                                   |

### **Specialty Classes** - 1 entry per exhibitor per class

- 520 Dam and Daughter  
 521 Exhibitor's Herd - 3 does of 1 breed; at least 1 in milk  
 522 Best Udder  
 523 Produce of Dam - 2 does from the same dam; dam to be named  
 524 Get of Sire - 3 does from 1 sire; sire to be named

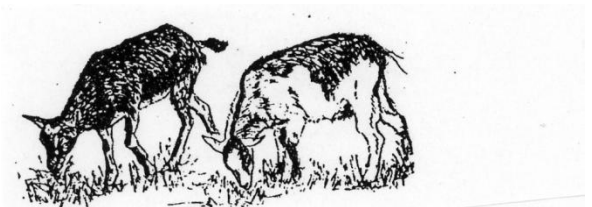


### **MEAT / MARKET GOAT (specify breed)**\_ - Classes 530 - 540 are for meat goat breeds.

- 530 Market Goat – An animal entered in this class may not be entered in any other Meat/Market Goat class. The animal must be part of a recognized 4-H Market Group Program.
- |  |  |
|--|--|
| 533 Junior Wether - up to 6 months old | 537 Senior Doe Kid - 9 to 15 months old                    |
| 534 Senior Wether - 6 to 12 months old | 538 Doeling - 15 months to 2 years old:<br>never freshened |
| 535 Doe Kid I - up to 3 months old     | 539 Junior Milker - up to 3 years old                      |
| 536 Doe Kid II - 3 to 9 months old     | 540 Senior Milker - 3 years or older                       |

### **Specialty Classes** - 1 entry per exhibitor per class

- 545 Dam and Daughter  
 546 Exhibitor's Herd - 3 does of 1 breed; at least 1 in milk  
 547 Produce of Dam - 2 does from the same dam; dam to be named  
 548 Get of Sire - 3 does from 1 sire; sire to be named



### **FIBER GOAT (angora, cashmere breeds)**

- 550 Fiber goat - under 2 years old; doe or wether  
 551 Fiber goat - over 2 years old; doe or wether

## **DIVISION 5 - Goat (cont.)**

### **UTILITY GOAT**

**Danish Points: 15 - 10 - 5**

Animal may not be entered in any class in the Dairy Goat Breeds, Meat/Market Goat or Fiber Goat sections. One entry per exhibitor per class.

- 555 Pack Goat Obstacle Course Competition - animal must carry a pack with weight in it. Pack weight will be determined based on animal age and weight. A doe or wether may participate. Exhibitor must provide pack; obstacle course provided.
- 556 Driving Goat Class - animal to be in harness pulling a cart or wagon. A doe or wether may participate. Exhibitor must provide equipment; obstacle course provided.

### **RIBBON ONLY CLASSES** - 1 entry per exhibitor per class

- 560 Companion Goat - goat kept for companionship; not for breeding. A doe or wether may participate; no bucks. All breeds and ages shown together. An animal in this class may not be shown in Dairy Goat Breeds, Meat/Market Goat, Fiber Goat or Utility Goat sections.
- 561 Goat Costume
- 562 Goat Obstacle Course

### **Herdmanship Award**

Award selection is based upon how well a junior and a senior exhibitor keep his/her area neat and clean, cares for animals, and cooperates with the superintendent, judge, and other exhibitors.

### **POSTERS**

**Premium Points: 5 - 4 - 3**

- 570 Goat Poster - a poster that presents a goat related subject or goat produce theme. Name and age must be on back of poster.

\*\*\*\*\*

### **4-H Emblem**

*The official 4-H emblem is a green four-leaf clover with the white letter "H" on each leaf. The bottom of the clover stem bends to the right. Each "H" stands for the development of HEAD, HEART, HANDS, and HEALTH. The 4-H emblem is one of the most highly recognized logo in the world.*

*The 4-H name and emblem have United States federal protection under federal code 18 U.S.C. 707, passed in 1939 and slightly revised in 1948. The Secretary of Agriculture is given responsibility and stewardship for the 4-H name and emblem, at the direct request of the U.S. Congress. This protection places the 4-H emblem in a unique category of protected emblems, along with the U.S. Presidential Seal, Red Cross, Smokey Bear, and the Olympic rings.*

## **DIVISION 5A - Camelid (Llama/Alpaca)**

Superintendent:

- ✿ Read Fair General Rules, 2026 Animal Health Rules for Fairs and Shows, and Livestock General Rules.
- ✿ Animals must be owned or leased by June 1, 2026.
- ✿ List breed and age of animal on entry form.
- ✿ A livestock card must be on display above each animal. The 4-H Fair Association will provide the cards.
- ✿ All exhibitors in the Camelid Division are required to wear the following while showing:
  - Girls:** White shirt buttoned at neck; black or dark colored (blue or brown) pants.
  - Boys:** White shirt buttoned at neck; black or dark colored (blue or brown) pants.
- ✿ All exhibitors must wear closed toed dark colored boots or shoes at all times. No sneakers.
- ✿ All animals must be shown by the owner or lessee.
- ✿ **Please indicate the number of animal pens needed on the entry form. Standard pen size is 6 x 6 feet.**
- ✿ Classes will be divided based upon age and / or ability at the discretion of the superintendent or judge on the day of the show.

### **Ribbon Only Classes**

- 580 Field Obstacle Course - obstacles encountered outside
- 581 Public Relations Obstacle Course - obstacles encountered in buildings or other places  
where camelids may appear for public relations purposes
- 582 Costume Class - just for fun

**Showmanship Classes:** All exhibitors must enter Fitting and Showmanship (includes fleece).

- 585 Novice Fitting and Showmanship - Junior or Senior exhibitor who has not shown before
- 586 Junior Fitting and Showmanship - exhibitor 8 to 13 years old as of Jan. 1, 2026
- 587 Senior Fitting and Showmanship - exhibitor 14 to 18 years old as of Jan. 1, 2026

**Cloverbud Clinics:** Exhibitor 5 to 7 years old as of Jan. 1, 2026

- 590 Cloverbud Exhibitor Clinic - 1 animal of any age or breed; all shown in the same class
- 591 Cloverbud Showmanship Clinic



### **Herdmanship Award**

Award selection is based upon how well the exhibitor keeps his/her area neat and clean, cares for animals, and cooperates with the superintendent, judge, and other exhibitors.

# **DIVISION 7 - Rabbit and Cavy**

Superintendent: Michelle Lee

- ✿ **This is not an official ARBA youth sanctioned show.**
- ✿ Read Fair General Rules, 2026 Animal Health Rules for Fairs and Shows, and Livestock General Rules.
- ✿ Entries close **July 15, 52026**. Submit entries on-line or if internet access is not available, submit entries on the "Hampden County 4-H / Youth Fair Livestock Entry Form" located in the back of the fair book. Substitutions or changes may be made in the same class or breed only.
- ✿ **Judging starts promptly at 9:30 a.m.**
- ✿ A current veterinarian's health certificate must be presented before an animal is checked in. All tattoos will be checked. No animal will be allowed without a valid health certificate.
- ✿ Any animal showing signs of disease will be barred from the fair.
- ✿ All animals will be given a coop number that will be placed in the right ear in black ink or marker.
- ✿ All animals must have a permanent and legible tattoo in the left ear, except in the Pet and Costume Classes.
- ✿ This is a one day, box show. All owners are to provide adequate caging and care for their own animals. All carrying cages must have solid bottoms. Exhibitors are encouraged to bring their own fans, ice, etc. to keep their animals comfortable.
- ✿ All exhibitors **must be present and must groom and carry their own animals to the table** unless writing for a judge. **NO ADULTS MAY HELP!** Youth may assist other youth when necessary.
- ✿ Animals entered in the Rabbit and Cavy Breed Classes may not also be entered in the Rabbit and Cavy Pet Class.
- ✿ Each exhibitor is responsible for bringing their own brooms, shovels, etc. for cleanup. Each exhibitor must clean up their own area (remove trash and debris - shavings, hay, fur) and take down cages and pens (dividers), sweep area, and load trucks, if necessary. Failure to do so will result in forfeiting premium money.
- ✿ **No animals will be released before 5:00 p.m. the day of the fair, under any circumstances.**
- ✿ There will be no vendors allowed at this fair, however 4-H members, exhibiting in the show, will be allowed to sell their rabbits providing they pre-register with the Rabbit Superintendent the day of the show.
- ✿ All exhibitors are required to wear long sleeves while showing.
- ✿ Awards will be presented to the top seven breeds with 10 or more entries. All other best of breeds will receive rosettes.

**Premium Points: 20 - 16 - 12 - 8 - 4**

Classes 701 - 706 follow the guidelines below in A and B.

A. In breeds maturing **over 10 lbs.** (known as commercial), the following age classifications apply:

Senior	8 months or older
Intermediate	6 to 8 months
Junior	under 6 months

B. In breeds maturing **under 10 lbs.** (known as fancy), the following age classifications apply:

Senior	6 months or older
Junior	under 6 months

**Specify breed on entry form.**

- 701 Buck - Junior class
- 702 Buck - Intermediate class
- 703 Buck - Senior class
- 704 Doe - Junior class
- 705 Doe - Intermediate class
- 706 Doe - Senior class



## **DIVISION 7 - Rabbit and Cavy (cont.)**

- 707 Rabbit and Cavy Pet Class - exhibitor will be asked questions about their pet (e.g. breed, age, sex, feeding, grooming, etc).
- 708 Rabbit and Cavy Pet Costume Class (no premiums paid) - create a costume for your rabbit or cavy to model.
- 709 Cavy - Junior Boar; under 4 months
- 710 Cavy - Junior Sow; under 4 months
- 711 Cavy - Intermediate Boar; 4 to 6 months
- 712 Cavy - Intermediate Sow; 4 to 6 months
- 713 Cavy - Senior Boar; over 6 months
- 714 Cavy - Senior Sow; over 6 months

**Showmanship Classes:** All exhibitors must enter Showmanship and Written Knowledge Activity.

**Premium Points for Classes 717 - 719: 10 - 8 - 6 - 4 - 2**

- ✿ Written test to be given beginning at 9:00 a.m. and must be completed by 2:00 p.m.
- ✿ Showmanship begins at 10:30 a.m. and must be completed by 2:00 p.m.
- ✿ Awards will be awarded for combined top score in Novice, Junior, and Senior classes.
- ✿ The top combined scores will compete together for the title of "Best Rabbit Showman".

- 715 Cloverbud Breed Clinic - exhibitor 5 to 7 years old as of Jan. 1, 2026
- 716 Cloverbud Showmanship Clinic - exhibitor 5 to 7 years old as of Jan. 1, 2026
- 717 Novice Showmanship - Junior or Senior 1st year exhibitor
- 718 Junior Showmanship - exhibitor 8 to 13 years old as of Jan. 1, 2026
- 719 Senior Showmanship - exhibitor 14 to 18 years old as of Jan. 1, 2026
- 720 Cloverbud Knowledge Activity - exhibitor 5 to 7 years old as of Jan. 1, 2026
- 721 Novice Written Knowledge Activity - Junior or Senior 1st year exhibitor
- 722 Junior Written Knowledge Activity - exhibitor 8 to 13 years old as of Jan. 1, 2026
- 723 Senior Written Knowledge Activity - exhibitor 14 to 18 years old as of Jan. 1, 2026

\*\*\*\*\*

## **DIVISION 8 - Model Horse Show**

Superintendent: Penny Blomgren

**Model Horse Show: Starts at 11 a.m.**

- ✿ Read Fair General Rules and Hall Exhibit General Rules.
- ✿ This activity will mirror a live horse show, but model horses will be exhibited.
- ✿ Only one entry per exhibitor per class.
- ✿ Entries will be in divisions by Cloverbud, Junior and Senior classes.
- ✿ Exhibitors may use handmade tack, support obstacles and presentation pieces.
- ✿ Place cards may be neatly hand written or typed (Class #, Exhibitor #, Class description). Each entry must have a hoof tag with an Exhibitor number for identification.
- ✿ There are 8 classes to enter with placings 1<sup>st</sup>, 2<sup>nd</sup>, and 3<sup>rd</sup> and participant. First place entries in each class will compete for Champion and Re (contserve Champion placing).
- ✿ Judging will begin at 11 a.m. Exhibitors must leave the area during judging.
- ✿ Model classes will be judged individually and given scores based on outlined criteria, cleanliness and presentation.
- ✿ Entries must be in place by 10:30 a.m. and remain in place until the end of the awards ceremony or 5 p.m., whichever comes later.

## **DIVISION 8 - Model Horse Show (cont.)**

### **Classes:**

**Danish Points: 15 - 12 - 8**

1. **Halter:** Model must have a well-fitting halter in place.
2. **Breed:** Model must be accompanied with a place card identifying breed and general uses of the breed. A halter is not required.
3. **Performance:** Model must have appropriate tack in place and accompanied with a place card that describes discipline and what class horse is performing in (i.e. Western, Hunt Seat, Saddle Seat, etc.).
4. **Trail:** Model must have appropriate tack in place and a trail obstacle (i.e. rails, gate, cones) with an accompanying place card that describes what the horse must accomplish during this obstacle.
5. **Jumping:** Model must have appropriate tack in place with a jump obstacle and must be accompanied with a place card that describes the obstacle and what the horse must accomplish during this activity.
6. **Costume:** Model should be adorned with an eye-catching costume and accompanied by a place card that describes the costume and few lines of how the costume was made.
7. **Mini Class:** Model entry must be under 4 inches in height at the shoulder and be accompanied with a place card that describes the horse and what its uses might be. No halter required for this class.
8. **Collector's Entry:** Entries will consist of 5 model horses of any size that have special meaning to the exhibitor and be accompanied with a place card that explains why these particular models were selected to show.
9. **Favorite Stuffed Horse:** Entry consists of any size stuffed horse with a place card that provides its name, how you acquired it and what makes it special to you. Extra points for visible signs of loving wear.
10. **Fantasy Collection:** Entry should include 3 to 5 models of fantasy horses (e.g. Pegasus, unicorn, etc.) with a place card that provides a brief description of each entry.

### **Judged Hobby Horse Show**

Bring your own stick horse if you have one (but not required) to engage in horse jumping, performance walk, trot and canter, and versatility classes. Classes will be judged for form, creativity and the ability to have fun!

### **Equine Activity**

- Pool Noodle Horse
- Equine Obstacle Course Competition

### **Horse Knowledge Booth and Equine Activity:**

An information booth with handouts of horse knowledge and terminology, as well as youth based equine activities, will be available.

### **Horse Demonstration:**

There will be demonstrations in the Mallory Arena to include in-hand safety, horsemanship skill and tack identification. These demonstrations will be followed by a brief question and answer period.



# **DIVISION 8A - Dog Show**

Superintendent: Emily Leckie and Caitlynn Tippet

- ✿ Read Fair General Rules, 2026 Animal Health Rules for Fairs and Shows, and Livestock General Rules.
- ✿ Premiums will be paid only to youth in Hampden County and registered 4-H members in Berkshire, Franklin, Hampshire, and Worcester Counties.
- ✿ The dog does not have to be owned by the exhibitor, but the exhibitor must have major responsibility for the animal's care and total responsibility for the training of the dog for at least three months prior to the date of the show.
- ✿ All dogs must be at least six months old. Mixed breed dogs are welcome.
- ✿ Female dogs in season will not be allowed in the show.
- ✿ All exhibitors must be in control of their dogs. All dogs must be on a leash or crated, and must not be left unattended. Exhibitors are responsible for the actions/damages caused by their dog. Exhibitors are responsible for cleaning up after their dogs.
- ✿ All dogs must have up-to-date vaccinations. **A copy of the dog's rabies and health record must be brought to the show.** Health papers will be checked at registration. The show committee reserves the right to refuse any dog admittance to the show for health or safety reasons.
- ✿ Exhibitors must present a neat, clean appearance. Show uniform is a white shirt/blouse and tan, white, or green pants/skirt. No jeans or sandals allowed.

**SHOWMANSHIP CLASSES:** All exhibitors must enter Showmanship.

**Danish Points: 15 - 10 - 5**

Dogs are to be shown on a martingale leash or suitable light choke chain and cotton web or nylon leash. Both the handler and the dog will be judged. The conformation of the dog is not judged, but general condition and cleanliness are important. Exhibitors will be asked questions about the care of their dog.

**Showmanship Scoring Chart**

Dog (30%)	Pts.	Handler (20%)	Pts.	Handling of Dog (50)%	Pts.
General Condition	10	Appearance	10	Gaiting	25
Condition of Nails	5	Cleanliness	10	Posing	25
Condition of Teeth	5				
Condition of Ears	5				
Condition of Coat	5				

**Novice:** Handler 7 to 18 years old as of Jan. 1, 2026

851 Inexperienced Novice - handler who has not shown before

**Section A:** Juniors 8 to 13 years old as of Jan. 1, 2026

852 Novice Junior Showmanship - 1st or 2nd year handler

853 Intermediate Junior - handler with 3 to 4 years' experience

854 Junior Showmanship - handler with more than 4 years' experience

855 Advanced Junior Showmanship - handler with three 4-H wins or who has shown 3 or more times (in their lifetime) in non-4-H point shows, such as AKC, UKC, ASCA, etc. and/or who handles dogs for other people. Any handler may enter.



## **DIVISION 8A - Dog Show (cont.)**

**Section B:** Seniors 14 to 18 years old as of Jan. 1, 2026

- 856 Novice Senior Showmanship – 1<sup>st</sup> or 2<sup>nd</sup> year handler
- 857 Intermediate Senior Showmanship - handler with 3 to 4 years' experience
- 858 Senior Showmanship - handler with more than 4 years' experience
- 859 Advanced Senior Showmanship - handler with three 4-H wins or handler with three 4-H wins or who has shown 3 or more times (in their lifetime) in non-4-H point shows, such as AKC, UKC, ASCA, etc. and/or who handles dogs for other people. Any handler may enter.

**OBEDIENCE CLASSES:** Follows AKC guidelines

**Danish Points: 25 - 20 - 15**

All Obedience classes are divided into Junior and Senior divisions.

Juniors: handler 8 to 13 years old as of Jan. 1, 2026

Seniors: handler 14 to 18 years old as of Jan. 1, 2026

Dogs are to be shown with buckle or suitable leather, chain, or nylon choke collar. A 6 foot leash is required. Dogs must complete all individual and group exercises. Any dog not returning for the group exercises will be ineligible to receive an award or premium. Any exhibitor not remaining until 5:00 p.m. will forfeit premiums.

**Section C: On Leash Division** - Classes 862 - 874

### Obedience Scoring Chart

Exercise	Pts.	Exercise	Pts.
Sit and Stay 1 min. (on leash)	30	Figure 8 (on leash)	25
Down and Stay 3 min. (on leash)	30	Heel (on leash)	45
Stand for examination (on leash)	30	Recall (on leash)	40

**Sub-Novice A** - Handlers who have not previously trained a dog. The dogs in this class must not have had training beyond the beginner level. Dogs will be on a loose leash and scored on the basis of 200 points. The dog and handler may only enter this class for one year.

862 Junior and Senior Sub-Novice A

**Sub-Novice B** - Handlers who have previously trained a dog at the beginner or more advanced levels of training; or have shown this dog at the Sub-Novice A level in previous years. Dogs must not have received a qualifying score in Novice. Dogs will be on a loose leash and scored on the basis of 200 points.

863 Junior Sub-Novice B

864 Senior Sub-Novice B

**Assistance Dog Sub-Novice A** - Handlers who have not previously trained an Assistance Dog. The dogs in this class must not have trained beyond the beginner level. Assistance Dogs will be expected to forward between the loin and hip region; on recall the dog comes toward you and immediately to your left side. Dogs will be on a loose leash and scored on the basis of 200 points.

865 Junior Assistance Dog Sub-Novice A

866 Senior Assistance Dog Sub-Novice A

**Assistance Dog Sub-Novice B** - Handlers who have previously trained an Assistance Dog. The dogs in this class must not have trained beyond the beginner level. Assistance Dogs will be expected to forward between the loin and hip region; on recall the dog comes toward you and immediately to your left side. Dogs will be on loose leash and scored on the basis of 200 points.

867 Junior Assistance Dog Sub-Novice B

868 Senior Assistance Dog Sub-Novice B

## **DIVISION 8A - Dog Show (cont.)**

**Sub-Novice C** - Handlers who have been in Sub-Novice B for several years. UKC rules will be used as guidelines. Must have been shown in Sub-Novice B at least 2 years; no training beyond Sub-Novice level. Will be based on UKC Sub-Novice Class. Exercises include: Heel on leash and Figure 8; Stand for exam; Recall over high jump; Long sit (1 minute); and Honor exercise. Score on the basis of 200 points. For complete rules go to <http://res.ukcdogs.com/pdf/2013ObedienceRulebookInsert.pdf>.

869 Junior Sub-Novice C  
870 Senior Sub-Novice C

**Section D:** The Beginner Novice A and Beginner Novice B classes (872 - 875) are based on the AKC's Beginner Novice class. Dogs must not have a qualifying score in Novice or more advanced obedience classes. For a complete explanation, please see the "AKC Obedience Rules and Regulations" or visit <http://www.akc.org/pdfs/rulebooks/RO2999.pdf>. The Beginner Novice class will be considered an *On-Lead Obedience* class.

**Beginner Novice A** - Handlers who have not previously trained a dog at the beginner novice level or more advanced levels. Dog must not have received a qualifying score in a more advanced class. Dogs will be on a loose leash and scored on the basis of 200 points. Dogs and handlers are only eligible for this class for 1 year.

871 Junior Beginner Novice A  
872 Senior Beginner Novice A

**Beginner Novice B** - Handlers who have previously trained a dog at this level or more advanced levels of training or have shown this dog in Beginner Novice A level in previous years. Dogs in this class must not have been trained beyond Beginner Novice. Dogs must not have received a qualifying score in a more advanced class. Dogs will be on a loose leash and scored on the basis of 200 points.

873 Junior Beginner Novice B  
874 Senior Beginner Novice B

**Section E: Off Leash Division** - Classes 875 - 890

**Preferred Novice A** - for dogs that have not been shown competitively in an upper level class (Novice, Pre-Graduate Novice, Graduate Novice, Open, or Utility) or handlers that have never trained a dog at Preferred Novice or more advanced levels. Dogs that have completed a CD or its equivalent are not eligible for this class. A dog has earned 3 blue Danish ribbons (or 3 qualifying scores of 170 or more points), it must move up to Novice or more advanced level the next 4-H year.

**Preferred Novice Scoring Chart**

Exercise	Pts.	Exercise	Pts.
Heel (on leash) and Figure 8	40	Stand for Exam (off leash)	30
Stay - Sit or Down	30	Heel Free	40
Recall (off leash)	30	Sit Stay - Get your Leash	30

875 Junior Preferred Novice A  
876 Senior Preferred Novice A

**Preferred Novice B** - for dogs that have been shown in Preferred Novice in previous years or handlers that have trained a dog at Preferred Novice or more advanced levels. Dogs that have completed a CD or its equivalent are not eligible for this class. Once a dog has earned 3 blue Danish ribbons (or 3 qualifying scores of 170 or more points), it must move up to Novice or more advanced level the next 4-H year.

877 Junior Preferred Novice B  
878 Senior Preferred Novice B

## **DIVISION 8A - Dog Show (cont.)**

**Novice A** - Handlers who have not previously trained a dog at Novice or more advanced levels of training. The dogs in this class may have completed the novice level of training, but must not have had training beyond this level. All of the exercises except the Heel on leash and the Figure 8 will be done off leash. Scored on the basis of 200 points. Dogs must not have completed the C.D.

**Novice Scoring Chart**

Exercise	Pts.	Exercise	Pts.
Heel (on leash) and Figure 8	40	Stand for Exam	30
Recall (off leash)	30	Heel Free	40
Group Sit 1 minute (on leash)	15	Sit Stay – Get your Leash	30
Group Down 3 minutes (on leash)	15		

- 879 Junior Novice A
- 880 Senior Novice A

**Novice B** - Handlers who have previously trained a dog at Novice or more advanced levels of training or have shown this dog at this level previously. All of the exercises except Heel on leash and the Figure 8 will be done off leash. Dogs that have finished their C.D. or dogs not having received a qualifying score in Graduate Novice may be shown in this class. Scored on the basis of 200 points.

- 881 Junior Novice B
- 882 Senior Novice B

**Pre-Graduate Novice** - For dogs that have not received a qualifying score in Open. Dogs may have received a C.D. Judging shall be as in Novice classes except the Figure 8 is off leash. The Long sit and down shall be with handlers out of sight. Drop on recall. Scoring on a basis of 200 points.

- 883 Junior Pre-Graduate Novice
- 884 Senior Pre-Graduate Novice

**Pre-Graduate Novice Scoring Chart**

Exercise	Pts.	Exercise	Pts.
Heel (on leash)	40	Drop on recall	30
Stand for examination	30	Long sit (3 min.)	30
Heel free and Figure 8	40	Long down (5 min.)	30

**Graduate Novice** - For dogs that have not received a qualifying score in Open or Utility. Dogs may have received a CD or its equivalent. Once a dog has earned 3 blue Danish ribbons (or 3 qualifying scores of 170 or more points), it must move up to Open A or more advanced level the next 4-H year.

**Graduate Novice Scoring**

Exercise	Pts.	Exercise	Pts.
Heel Free and Figure 8 (off leash)	40	Dumbbell Recall over High Jump	30
Drop on Recall	30	Recall Over Broad Jump	30
Dumbbell Recall	40	Stay-Get Your Leash (Sit, Down)	30

- 885 Junior Graduate Novice
- 886 Senior Graduate Novice

## **DIVISION 8A - Dog Show** (cont.)

**Open A and B Combined** - Open to any handler who has completed Novice classes or received a C.D. degree. The same handler must complete all exercises.

- 887 Junior Open A and B Combined
- 888 Senior Open A and B Combined

### **Open A and B Combined Scoring Chart**

Exercise	Pts.	Exercise	Pts.
Heel free and Figure 8	40	Broad jump	20
Drop on recall	30	Long sit	30
Retrieve over high jump	30	Long down	30
Retrieve on flat	20		

**Utility** - Open to any dog that has completed Open classes or received a C.D.X. degree. The same handler must handle the same dog through all exercises.

- 889 Junior Utility
- 890 Senior Utility

### **Utility Scoring Chart**

Exercise	Pts.	Exercise	Pts.
Scent discrimination article 1	30	Signal exercise	40
Scent discrimination article 2	30	Directed retrieve	30
Moving stand and examination	30	Directed jumping	40

**Cloverbud Clinics:** Handler 5 to 7 years old as of Jan. 1, 2026

- 891 Cloverbud Showmanship Clinic
- 892 Cloverbud Obedience Clinic



**No premiums paid in the following classes.**

- 893 Rally - a rally course will be set up for all to try.
- 894 Games - will be held only if time allows; recall relay, egg and spoon weave, recall past food, tunnel race; various obstacle courses will be set up.

### **4-H Vision**

*A world in which youth and adults learn, grow, and work together as catalysts for positive change.*

# HAMPDEN COUNTY 4-H / YOUTH FAIR

## Hall Exhibit General Rules

1. Read Fair General Rules.
2. Age Requirements - No child under 5 years old, as of January 1, 2026 is allowed to exhibit.
  - ✿ **Cloverbud Division** - Youth 5 to 7 years old as of January 1, 2026 will set up their exhibits in a designated area. Non-judgmental observation will take place and ribbons will be awarded.
  - ✿ **Junior Division** - Youth 8 to 13 years old as of January 1, 2026
  - ✿ **Senior Division** - Youth 14 to 18 years old as of January 1, 2026.  
Danish or modified Danish judging will be used for Juniors and Seniors.
3. Entries - **No more than one entry per class per exhibitor or club** accepted unless otherwise specified. Exhibitors failing to comply with the premium list requirements will be disqualified.
4. **Absolutely no hall entries accepted on the day of the Fair.**
5. All exhibits must be the result of the exhibitor's own effort within the current fair year, August 2025 through July 2026.
6. An exhibit may not be shared between classes (e.g. the baked good in the Homemaker Exhibit may not also be entered as a baked good in the Food Division).
7. All exhibits must be clean and presentable.
8. All exhibits must be set up by the youth exhibitor **without** adult assistance.
9. Exhibit Set-Up
  - Hall entries will be received beginning at 3:00 p.m. on Friday, July 24<sup>th</sup> in the Mallary Complex.
  - **No hall exhibits will be accepted before 3:00 p.m.**
  - **Arrive early to set up. Organize your entries prior to your arrival to assist in quick set-up.**
  - Specific areas are designated for set up.
  - All hall exhibits **MUST BE IN PLACE BY 6:30 P.M.**, Friday, July 24<sup>th</sup>.
  - **Exhibitors must leave the building by 6:30 p.m.**
  - All Hall exhibits **MUST REMAIN** in place until 5:00 p.m. or after the awards ceremony, whichever is later on Saturday, July 25<sup>th</sup>.
10. The judges reserve the right to subdivide classes based on the number of entries.
11. The judges and the Hampden County 4H/Youth Fair Association reserve the right to dispose of any exhibit that poses an immediate health hazard.
12. Exhibits not picked up by 5:30 p.m., Saturday, July 25<sup>th</sup> will be discarded.

**EXHIBITS ARE NOT TO BE REMOVED BEFORE 5:00 P.M.  
ON SATURDAY, JULY 25<sup>th</sup>.**

# **DIVISION 9 - Club and Group Exhibit**

☘ Read Fair General Rules and Hall Exhibit General Rules.

## **901 Working Exhibit**

Working exhibits are one of the most important components of the 4-H/Youth Fair as they allow fair visitors an opportunity to see 4-H members in action. A working exhibit may consist of an individual or group performing or working on some phase of their club's activities. Working exhibits will be presented on Saturday, from 10:00 a.m. to 2:00 p.m. for 30 minutes to one-hour periods. Entrants will be contacted to schedule time periods.

### Rules:

- ☘ A working exhibit must be submitted on a separate *Hampden County 4-H/Youth Fair Entry Form* in the leader's name.
- ☘ The exhibit should be an active display or demonstration of some part of a 4-H project.
- ☘ Up to 3 **different** working exhibits may be submitted per club.
- ☘ Youth doing the exhibit should explain to spectators what they are doing and answer questions.
- ☘ Clubs will be awarded a \$50.00 premium for each worthy working exhibit.

## **902 Club Exhibit**

**Premium Points: 50 - 45 - 40 - 35 - 30 - 25 - 20**

- ☘ Club exhibits must be submitted on a separate *Hampden County 4-H/Youth Fair Entry Form* in the leader's name.
- ☘ The exhibit must tell a story of the club's work or activities; it must not be a display of work done.
- ☘ Up to 3 **different** club exhibits may be submitted per club.
- ☘ All club exhibits must have a judge's information envelope containing the following information: name of the club, name of the club's leader(s), nature of the club, names and ages of the club's members, number of members who helped with the display.
- ☘ The exhibit must be set up by club members. Leaders may assist, but may not set up the exhibit alone.
- ☘ Exhibit space is 3 feet by 6 feet. The club must furnish the background.

<b>Club Exhibit Score Sheet</b>	<b>Points</b>
<b>Educational value and originality:</b> tells a story to the public, interesting presentation	<b>50</b>
<b>General effect:</b> arrangement, color scheme, lighting, neatness, attractiveness, scale (relationship to size), etc.	<b>25</b>
<b>Workmanship:</b> quality of materials used and workmanship	<b>10</b>
<b>Signs:</b> title of exhibit (subject or theme) largest, name of club and town, name of leader(s) and members, other signs as needed, envelope with judge's information	<b>10</b>
<b>4-H Clover:</b> must be included in the exhibit	<b>5</b>
<b>Total</b>	<b>100</b>

## **Club Promotional Item**

**Danish Points: 8 - 6 - 4**

Includes a jacket, shirt, banner, etc. with the club logo.

**903**      Designed by club and printed commercially

**904**      Designed and printed by club

## **905 Club Scrapbook**

**Danish Points: 8 - 6 - 4**

A collection of club activities and/or projects displayed in a notebook or photo album.

## **DIVISION 9 - Club and Group Exhibit** (cont.)

### **906 Club Media**

**Danish Points: 8 - 6 - 4**

A collection of media (newspaper articles, pictures, social media samplings) that focus on the club and/or club members during the past year.

### **907 School, Group, or Club Hall Exhibit**

**Danish Points: 8 - 6 - 4**

One item relating to any class in the Hall Exhibit section of the fair book.

### **908 Hampden County 4-H / Youth Fair Promotional Media**

One or more news release(s) appearing in the local media (newspaper, radio, television, internet, social media, etc.) from May through July of the current year promoting the fair. Clubs will be awarded a \$50.00 premium for a worthy promotional media exhibit.

### **909 Food Sculpture**

Clubs or groups can showcase their design and construction skills by creating a community service sculpture using non-perishable items. Club or group entrants will donate all items at the end of the fair. A \$75.00 premium will be awarded to the clubs or groups with a worthy display.

#### **Rules:**

- ✿ Sculpture space is up to 4 feet by 4 feet maximum.
- ✿ Clubs and groups are responsible for acquiring the items used in their sculpture.
- ✿ Sculpture items may include: non-perishable food, pet food, travel size toiletries such as shampoo, toothpaste, soap bars, deodorant, tissues, wipes, toothbrush and chap-stick.
- ✿ Alcohol, perishable food, junk food, clothing and open packages are not allowed. The use of healthy food options are encouraged.
- ✿ Sculpture item containers should be plastic, cans, or boxes. No glass containers allowed.
- ✿ Save all packing boxes/bags for repacking the items at the end of the fair.
- ✿ All labels must be legible, not covered, stripped off, or altered.
- ✿ Items can be joined using tape, wire, Velcro, etc., as long as the removal does not damage the labels or food containers during deconstruction.
- ✿ Signage may be used to help in the presentation of the masterpiece such as title of the structure, types and quantities of the items used, etc.
- ✿ Entrants are responsible for deconstructing the sculpture at the end of the fair and transporting the items to a food bank or other non-profit organization.

\*\*\*\*\*

### **4-H Motto**


***“To Make the Best Better”***



### **4-H Slogan**

***“Learn by Doing”***

## **DIVISION 9A - Individual Exhibit**

 Read [Fair General Rules](#) and [Hall Exhibit General Rules](#).

### **950**     **4-H Theme**

**Danish Points: 8 - 6 - 4**

Item made with a 4-H theme or fabric.

### **951**     **Patriotic Theme**

**Danish Points: 8 - 6 - 4**

Item depicting the United States 250<sup>th</sup> anniversary will be showcased.

### **952**     **Homestead Showcase**

**Premium Points: 50 - 45 - 40 - 35**

All items in this class must be made by the exhibitor. Points are given for each entry in the exhibit. The best *Homemaker Exhibit* must score a minimum of 80 points. If a backdrop is used (highly recommended), it must be self-supporting and provided by the exhibitor.

<b>Homestead Showcase Requirements</b>	<b>Points</b>
1 sewn garment from a class listed in the fair book	<b>25</b>
1 needlecraft item from a class listed in the fair book	<b>20</b>
2 canning jars from a class listed in the fair book	<b>20</b>
1 baked good - pie, cake, or bread; scratch recipe only; include recipe	<b>15</b>
1 craft or woodworking item from a class listed in the fair book	<b>15</b>
Presentation of the items	<b>5</b>
<b>Total</b>	<b>100</b>

### **953**     **Handy Maker Showcase**

**Premium Points: 50 - 45 - 40 - 35**

All items in this class must be made by the exhibitor. Points are given for each entry in the exhibit. The best *Handy Maker Exhibit* must score a minimum of 80 points. If a backdrop is used (highly recommended), it must be self-supporting and provided by the exhibitor.

<b>Handy Maker Showcase Requirements</b>	<b>Points</b>
1 woodworking article from a class listed in the fair book	<b>25</b>
1 conservation collection from a class listed in the fair book	<b>25</b>
1 photograph or art exhibit from a class listed in the fair book	<b>20</b>
2 different crafts from classes listed in the fair book	<b>25</b>
Presentation of the items	<b>5</b>
<b>Total</b>	<b>100</b>

### **954**     **Green Thumb Showcase**

**Premium Points: 50 - 45 - 40 - 35**

The items in this class must be grown, selected, and arranged by the exhibitor. Points are given for each entry in the exhibit. The best *Green Thumb Exhibit* must score a minimum of 80 points. If a backdrop is used, it must be self-supporting and provided by the exhibitor.

<b>Green Thumb Showcase Requirements</b>	<b>Points</b>
1 hanging house plant	<b>15</b>
1 potted plant, terrarium, or dish garden	<b>20</b>
1 plate of vegetables from a class listed in the fair book	<b>20</b>
1 fresh floral arrangement from a class listed in the fair book	<b>20</b>
1 vase of cut flowers from a class listed in the fair book	<b>20</b>
Presentation of the items	<b>5</b>
<b>Total</b>	<b>100</b>

## **DIVISION 9A - Individual Exhibit** (cont.)

### **955 From Start to Finish Exhibit**

**Danish Points: 30 - 25 - 15**

Select an item that you have raised, grown, or made and show the progression of how it might be used in 3 stages. Present the 3 stages in an arrangement with labels.

<b>Examples</b>		
<b>Stage 1</b>	<b>Stage 2</b>	<b>Stage 3</b>
Blueberries	Canned Blueberries	Blueberry Muffins
Sheep (photo)	Fleece	Felted Item
Garlic plant (photo)	Garlic Bulb	Garlic Vinegar

### **956-959 Educational Exhibit**

**Danish Points: 15 - 12 - 8**

An exhibit that demonstrates or tells about a person, project, or activity that cannot be exhibited in any other fair category (i.e. environment, theater arts, etc.). The display may be a collection of items or an educational exhibit. Maximum space allowed is 3 feet by 3 feet.

**956** Video      **958** Individual Item      **957** Display      **959** Other

### **960 Adult Exhibit**

**Rosette ribbon awarded**

The 4-H Program would not be possible without the generous gift of time and expertise from many talented adults. We invite leaders, volunteers, and parents to exhibit in the hall. You may exhibit one article from any one class listed in the Hall Exhibit section of the fair book.

### **961-962 4-H Records/Scrapbook**

**Danish Points: 8 - 6 - 4**

- 961**      4-H record in a binder with a summary, 4-H story, project records, and support material.  
**962**      4-H scrapbook including a collection of pictures of 4-H projects and activities, etc. with captions.

### **964-966 Public Presentations**

**Premium \$5.00**

Showcase your oral communication skills and abilities. Presentations take place at center stage. Refer to the "Schedule of Events" for the starting time. Go to [www.mass4h.org](http://www.mass4h.org) for information and guidelines for **Public Speaking** and **Visual Presentations**.

Exhibitors who had a public speaking or visual presentation at a club meeting, are eligible for a premium with documentation from the club leader. Scan and attach your signed scorecard to the on-line entry form or mail a copy of your signed scorecard with the entry form.

#### **964 Public Speaking**

Junior and Senior exhibitors only; a 5-10 minute speech with no props or visual-aids.

#### **965 Visual Presentation**

Cloverbud, Junior, and Senior exhibitors are encouraged to participate. Presentation time is 3-10 minutes for Cloverbuds and Juniors; 7-10 minutes for Seniors. Exhibitors must supply their own visual-aids.

#### **966 Performing Arts / Talent Show**

All exhibitors are encouraged to entertain the audience with their creative ability (drama, stand-up comedy, dance, play an instrument, sing a song, magic tricks, gymnastics, impersonations, etc.). Maximum time allotment is 5 minutes. Performances must be appropriate for young audiences. **No amplifiers allowed. The Hampden County 4H / Youth Fair Association reserves the right to lower the volume of any Performing Arts / Talent Show act that poses a safety concern.** Registration for this class may take place the day of the fair, however, pre-registration on the entry form to the Fair Secretary by July 15<sup>th</sup> is required to receive the premium.

# **DIVISION 10 - Vegetable, Fruit, and Environmental Collections**

- ✿ Read Fair General Rules and Hall Exhibit General Rules.
- ✿ Fruits and vegetables must be grown, selected, and arranged by the exhibitor.
- ✿ **No store bought fruits or vegetables allowed.**
- ✿ Include the exact number of specimens required.
- ✿ Specimens should be uniform - the same size, shape, and color.
- ✿ Quality is considered - not too large, not too small, fine textured, etc.
- ✿ Exhibits should be free from blemishes, no cuts, bruises, insect injury, or disease.
- ✿ Specimens should be washed or wiped as one would prepare for market.
- ✿ Use paper plates to display items in Classes 1001 - 1035 and 1037-1038.
- ✿ **No glass containers permitted.**



## **Vegetable**

**Premium Points: 8 - 7 - 6 - 5 - 4**

1001 Beans - green snap; 15 pods	1020 Peas - 10 pods
1002 Beans - yellow snap; 15 pods	1021 Peppers - 5 specimens
1003 Beans - lima; 15 pods	1022 Potatoes - white or red; 5 specimens; wipe, do not wash
1004 Beans - shell; 15 pods	1023 Radishes - 10 specimens; cut top to 1"
1005 Beets - 5 specimens; cut top to 1"	1024 Squash - green summer; 2 specimens
1006 Broccoli - 2 specimens	1025 Squash - yellow summer; 2 specimens
1007 Cabbage - green or red; 2 heads	1026 Squash - white summer; 2 specimens
1008 Carrots - 5 specimens; cut top to 1"	1027 Squash - winter; 2 specimens
1009 Cauliflower - 2 specimens	1028 Tomatoes - green; 5 specimens; stems on
1010 Corn - sweet; 5 ears; husk on half	1029 Tomatoes - red; 5 specimens; stems off
1011 Cucumbers - 2 specimens; stems on	1030 Tomatoes - cherry, pear, plum; 10 red specimens; stems off
1012 Cucumbers - 10 pickling; stems on	1035 Other Vegetable not mentioned - list type: limit of 3 different entries
1013 Eggplant - 2 specimens	1036 Mini Garden Project - patio tomato plant in a container
1014 Kohlrabi - 3 specimens	1037 Decorated Vegetable - ribbon only
1015 Leeks - 3 specimens	1038 Largest Vegetable - ribbon only
1016 Lettuce - 2 heads or bunches	
1017 Onions - white; 5 specimens; do not peel	
1018 Onions - yellow; 5 specimens; do not peel	
1019 Onions - red; 5 specimens; do not peel	

<b>Score Sheet for Classes 1040 and 1041</b>		<b>Points</b>
Quality		<b>50</b>
Arrangement		<b>30</b>
Utility Value		<b>10</b>
Number of Varieties		<b>10</b>
	<b>Total</b>	<b>100</b>

**Premium Points: 32 - 25 - 20 - 15 - 10**

1040 Display of at least 6 kinds of vegetables covering at least 10 square feet of table space

**Premium Points: 15 - 12 - 10 - 8 - 6**

1041 Display of at least 5 kinds of vegetables arranged in an appropriate, unbreakable container

## **DIVISION 10 - Vegetable, Fruit, and Environmental Collections** (cont.)

### **Fruit**

**Premium Points: 8 - 7 - 6 - 5 - 4**

Exhibitor must provide basket for display.

1050	Raspberry - 1 pint basket	1053	Strawberry - 1 pint basket
1051	Blackberry - 1 pint basket	1054	Other Fruit not mentioned - label kind; limit of 3 different entries
1052	Blueberry - 1 pint basket		

### **Environmental Collections**

**Premium Points: 8 - 7 - 6 - 5 - 4**

The collections must be made by the exhibitor during the past 12 months.

**No items from the ENDANGERED SPECIES LIST will be allowed.**

Refer to <https://www.mass.gov/info-details/list-of-endangered-threatened-and-special-concern-species>.

- 1059 Collection of at least 5 garden pests with names and recommended control measures.
- 1060 Collection of 10 or more different leaf prints identified. (No tracings; similar to a fingerprint).
- 1061 Collection of 10 or more different leaves mounted and named. (Label collection location).
- 1062 Collection of 10 or more different insects mounted and named. All insects must be dead and properly prepared for display before mounting. (Label collection location).
- 1063 Collection of 10 or more different common weeds mounted and named. (Roots not necessary).
- 1064 Collection of 10 or more different wild flowers mounted and named. (Roots not necessary).
- 1065 Collection of 10 or more different native wood mounted and named. (Each piece cut 3 different ways).
- 1066 Collection of 10 or more different minerals mounted and named. (Label collection location).
- 1067 Collection of 10 or more different items in the same category (not listed above) related to the environment.

\*\*\*\*\*

## **DIVISION 11 - Flower**

- ❁ Read Fair General Rules and Hall Exhibit General Rules.
- ❁ All flowers must be grown, selected, and arranged by the exhibitor, except for Classes 1149, 1150, and 1159 where flowers may be purchased or otherwise obtained, but must be arranged by exhibitor.
- ❁ Appropriate containers are to be furnished by the exhibitor.
- ❁ Be sure to include the exact number of specimens specified. A **bloom** is a single flower; a **stem** is part of the plant that has many blooms on it.
- ❁ Stems should be at least 4 inches long if possible.
- ❁ Flowers should be uniform (same size) and free from insect injury or disease.
- ❁ Remember to label exhibits for those classes requiring labels.
- ❁ **No flowers from the ENDANGERED SPECIES LIST will be allowed.**
- ❁ Refer to <https://www.mass.gov/info-details/list-of-endangered-threatened-and-special-concern-species>.
- ❁ **No Cannabis products allowed.**

**Premium Points: 8 - 7 - 6 - 5 - 4**

1101	Aster - 5 blooms	1107	Dahlia - 5 blooms
1102	Bachelor Button - 5 blooms	1108	Gladiolus - 3 spikes
1103	Calendula - 5 stems	1109	Lily - 5 stems
1104	Carnation - 5 stems	1110	Marigold - 5 blooms; large (African)
1105	Coneflower - 5 blooms	1111	Marigold - 5 blooms; single
1106	Cosmo - 5 blooms	1112	Marigold - 5 blooms; double

## **DIVISION 11 - Flower (cont.)**

1113	Petunia - 5 blooms; single	1118	Sunflower - 3 blooms
1114	Petunia - 5 blooms; double	1119	Zinnia - 5 blooms; large
1115	Rose - 3 blooms or 3 stems	1120	Zinnia - 5 blooms; small
1116	Salvia - 5 blooms	1121	Zinnia - 5 blooms; Mexican
1117	Snapdragon - 5 stems	1123	Other Flower not mentioned - 5 blooms or 5 stems; limit of 3 different kinds; label kind

**Indoor Plants** - must be grown by the exhibitor

1130	African violet	1138	Potted Flowering plant - label kind
1131	Begonia	1139	Potted Foliage plant - label kind
1132	Cactus	1140	Potted Hanging plant - either indoor or outdoor; label kind
1133	Fern	1141	Potted Herb - single herb or collection; any variety; label kind
1134	Ivy	1142	Other Indoor Plant not mentioned - label kind; limit of 3 different entries
1135	Orchid		
1136	Succulent		
1137	Topiary		

**Arrangements** - use oasis in flower arrangements where possible.

**Premium Points: 10 - 8 - 6 - 4 - 2**

- 1145 "Coffee Break" - flower arrangement in a coffee mug.
- 1146 "Tea Time" - flower arrangement in a tea pot or tea cup.
- 1147 "Drift Away" - flower arrangement using driftwood.
- 1148 "Freedom Reigns" - flower arrangement in a container with a patriotic theme.
- 1149 "Autumn's Here" - arrangement of dried flowers using fall colors; no synthetic flowers.
- 1150 "Grandpa's Farm" - arrangement of wild flowers.
- 1151 "A Tisket, A Tasket" - flower arrangement in a basket.
- 1152 "Red, White and Blue" - flower arrangement in a red, white and blue container.
- 1153 "Animalmania" - flower arrangement in an animal shaped container.
- 1154 "April Showers" - flower arrangement in a watering can.
- 1155 "Play it Again" - flower arrangement in a recycled object.
- 1156 "Anything Goes" - flower arrangement in a creative unusual container.
- 1157 "Swan Lake" - floating flower arrangement; use your imagination.
- 1158 "Miniature Beauty" - flower arrangement not over 5 inches in any direction.
- 1159 "Wall Hanging" - arrangement of natural materials.



**Outdoor Containers** - must be planted and grown by the exhibitor

**Premium Points: 10 - 8 - 6 - 4 - 2**

- 1165 Dish Garden (must be rooted)
- 1166 Plant Terrarium (must be rooted)
- 1167 Container Garden - portable garden containing vegetables, flowers, and/or herbs
- 1168 Vertical Garden - garden containing vegetables, flowers, and/or herbs; use your imagination
- 1169 Window box - judged on creativity
- 1170 Fairy garden scene in a container under 18 inches - artificial and/or real materials
- 1171 Fairy garden scene in a container 18 inches or larger - artificial and/or real materials
- 1172 Garden in an unusual container under 2 gallons
- 1173 Garden in an unusual container 2 gallons or larger

## **DIVISION 12 - Canning**

- ✿ Read Fair General Rule and Hall Exhibit General Rules.
- ✿ The product shown must be of the current year's production (August 2025 through July 2026) and made by the exhibitor.
- ✿ Jars must be identical; labeling must be uniform; include name of product; month and year preserved.
- ✿ The jars in each entry shall be in standard, clear, pint canning jars, except jellies and jams. Jellies and jams may be in pint jars or in standard jelly or jam jars.
- ✿ All products, **including jam and jelly, must be sealed by processing.**
- ✿ **No glass topped, bail rubber ring jars. Metal jar rings must be removed before showing.**

### **What judges evaluate:**

- |  |  |
|--|--|
| <ul style="list-style-type: none"> <li>✿ <i>Workmanship as shown by condition of exhibit</i></li> <li>✿ <i>Thoroughly clean, matching jars</i></li> <li>✿ <i>Preference for plain rather than fancy packs</i></li> <li>✿ <i>Jelly should be clear, good color, good consistency</i></li> <li>✿ <i>Jam should have good color, good consistency</i></li> <li>✿ <i>Quality - good quality, uniform size, good color</i></li> </ul> | <ul style="list-style-type: none"> <li>✿ <i>Liquid - clear, no sediment, proper amount in jar; For maple syrup and honey judging criteria, refer to <a href="http://www.ams.usda.gov/grades-standards">www.ams.usda.gov/grades-standards</a>. Search for honey or maple syrup.</i></li> <li>✿ <i>Proper Headspace - ¼ inch for jams and jellies; ½ inch for fruits and tomatoes processed in boiling water; 1 to 1¼ inches for low acid foods processed in a pressure canner.</i></li> </ul> |
|--|--|

**Premium Points: 8 - 7 - 6 - 5 - 4**

### **Vegetables** - 2 jars each

<ul style="list-style-type: none"> <li>1201 Tomatoes</li> <li>1202 Beans - green snap</li> <li>1203 Beans - yellow snap</li> <li>1204 Carrots</li> <li>1205 Greens</li> <li>1206 Beets</li> <li>1207 Peas</li> <li>1208 Corn</li> </ul>	<ul style="list-style-type: none"> <li>1209 Asparagus</li> <li>1210 Squash</li> <li>1211 Shell Beans</li> <li>1212 Lima Beans</li> <li>1213 Tomato Juice</li> <li>1214 Mixed Vegetables</li> <li>1215 Other Vegetable not mentioned - indicate variety</li> </ul>
---	---

### **Pickles and Relishes** - 2 jars each

<ul style="list-style-type: none"> <li>1216 Bread and Butter Pickles</li> <li>1217 Mixed Pickles</li> <li>1218 Relish</li> </ul>	<ul style="list-style-type: none"> <li>1219 Dill Pickles</li> <li>1220 Other Pickle not mentioned - indicate variety</li> </ul>
--	---

### **Fruit** - 2 jars each

<ul style="list-style-type: none"> <li>1221 Peaches</li> <li>1222 Blueberries</li> <li>1223 Pears</li> <li>1224 Raspberries</li> <li>1225 Blackberries</li> </ul>	<ul style="list-style-type: none"> <li>1226 Plums</li> <li>1227 Cherries</li> <li>1228 Mixed Fruit</li> <li>1229 Other Fruit not mentioned - indicate variety</li> </ul>
---	--



**Jams, Jellies, Preserves, Etc.** - 2 jars each of same variety; indicate variety on Entry Form; exhibit up to 3 different varieties in each class

- 1230 Jam - limit of 3 different varieties
- 1231 Jelly - limit of 3 different varieties
- 1232 Conserves, Preserves, Marmalade, Butter (non-dairy) - limit of 3 different varieties

## **DIVISION 12 - Canning** (cont.)

**Miscellaneous** - 2 jars each

- 1234 Maple Syrup
- 1235 Tomato Sauce
- 1236 Apple Sauce
- 1237 Honey



**Collections** - 3 jars; one each of 3 varieties

- |  |   |
|--|---|
| <ul style="list-style-type: none"> <li>1238 Vegetables</li> <li>1239 Fruit</li> <li>1240 Jams</li> <li>1241 Jellies</li> </ul> | <ul style="list-style-type: none"> <li>1242 Conserves, Preserves, Marmalade, Butter (non-dairy)</li> <li>1243 Pickles</li> <li>1244 Relishes</li> </ul> |
|--|---|

**Premium Points: 10 - 8 - 6 - 4 - 2**

**Gift Baskets**

**Premium Points: 10 - 8 - 6 - 4 - 2**

- 1251 Canning Gift Basket - in a basket, attractively arranged with clear wrap, tied at the top, include at least 1 jar of each 3 types of canned vegetables. Small items to compliment the basket are allowed. List the basket contents.
- 1252 Jams/Jellies Gift Basket - in a basket, attractively arranged with clear wrap, tied at the top, include at least 1 jar of each 3 types of canned jams or jellies. Small items to compliment the basket are allowed. List the basket contents.
- 1253 Other Canned Foods in a Gift Basket - in a basket, attractively arranged with clear wrap, tied at the top, include at least 1 jar of each 3 types of other canned foods not listed in the above gift baskets. Small items to compliment the basket are allowed. List the basket contents.



## **DIVISION 13 - Food**

- ✿ Read Fair General Rules and Hall Exhibit General Rules.
- ✿ **No package mix accepted.**
- ✿ All entries must be prepared separately, mixed, and made by each exhibitor.
- ✿ All cakes and breads must be taken out of the pan.
- ✿ **All entries must be on a non-breakable plate and protected with a clear cover or clear plastic wrap.**
- ✿ All entries must be accompanied by a recipe (only exception are the *Fair Recipes*). Recipe should include both the ingredients and the complete directions neatly printed or typed.

### **Premium Points: 8 - 7 - 6 - 5 - 4**

- 1301 Restricted Diet Baked Product - e.g. made with gluten free, sugar free, fat free, salt free ingredients, etc.
- 1302 Nutritious Snack
- 1303 Food Fun - food sculpture or food made using your imagination
- 1304 Packed School Lunch - include menu for lunch and list menu for other meals to show a balanced diet for the day.
- 1305 Attractive Place Setting - for a special occasion with menu; 2 feet by 2½ feet space
- 1306 6 Rolled Cookies - must be rolled and cut
- 1307 6 Dropped Cookies - includes ball cookies such as snicker doodles, peanut butter, etc.
- 1308 6 Dropped Cookies - chocolate chip
- 1309 6 Molded Cookies - made with cookie press; all the same shape
- 1310 6 Other Cookies not mentioned above - indicate kind
- 1311 6 Brownies
- 1312 6 Muffins - with or without wrappers
- 1313 6 Donuts
- 1314 6 Cupcakes - with or without wrappers
- 1315 6 Baking Powder Biscuits
- 1316 6 Candy Pieces
- 1317 6 Bar Cookies



### **Premium Points: 10 - 8 - 6 - 4 - 2**

- 1325 Non-White Yeast Bread - at least 1/3 cup non-white flour
- 1326 White Yeast Bread - at least 1/3 cup white flour
- 1327 Fancy Yeast Bread
- 1328 Yeast Rolls
- 1329 Coffee Cake - without yeast
- 1330 Coffee Cake - with yeast
- 1331 Quick Bread - without yeast
- 1332 Two Crust Pie - indicate type; include crust recipe
- 1333 Cake - pound; frosted or unfrosted; include frosting recipe if used
- 1334 Cake - spice; frosted; include frosting recipe
- 1335 Cake - light; frosted; include frosting recipe
- 1336 Cake - chocolate; frosted; include frosting recipe
- 1337 Cake - sponge, angel, chiffon; no frosting
- 1338 Other Food not mentioned above - indicate kind
- 1339 Patriotic Decorated Cake - Decorate a cake with a patriotic theme. Include recipe for cake and frosting; judge will cut the cake; quality to be considered. Awards will be presented to the Junior and the Senior exhibitors with the best overall decorated cakes.
- 1345 Gift in a Jar - a quart jar of dried cookie mix showing layers of dry goods in an attractive arrangement. Decorate the jar for an occasion. Attach ingredients and baking directions.



## **DIVISION 13 - Food** (cont.)

1350 Junior Fair Recipe Contest

Premium Points: 10 - 8 - 6 - 4 - 2

### **OATMEAL PEANUT BUTTER TREASURES**

Preheat oven to 350°F. Lightly grease a cookie sheet.

#### **INGREDIENTS**

##### **Dry**

1  $\frac{3}{4}$  cups all-purpose flour  
1 cup white sugar  
1 cup brown sugar  
1 tsp. baking soda  
 $\frac{1}{2}$  tsp. salt  
2  $\frac{1}{2}$  cups oatmeal  
 $\frac{1}{2}$  cup chopped nuts  
1 cup chocolate chips

##### **Wet**

2 eggs  
 $\frac{1}{4}$  cup milk  
1 tsp. vanilla  
 $\frac{1}{4}$  lb. soft margarine  
 $\frac{1}{2}$  cup peanut butter

#### **DIRECTIONS**

**Mix** all dry ingredients together in a large bowl.  
**Mix** all wet ingredients together in a medium bowl.  
**Add** the wet ingredients to the dry ingredients.  
**Mix** until well blended.

**Bake** approximately 12-15 minutes or until golden brown.

**Remove** from oven and cool completely.



## **DIVISION 13 - Food (cont.)**

1351 Senior Fair Recipe Contest

Premium Points: 10 - 8 - 6 - 4 - 2

### **PATRIOTIC CUPCAKES**

Preheat oven to 350°F.

Yields: 2 dozen

#### **CUPCAKES**

##### **Dry Ingredients**

2 cups flour  
2 cups sugar  
1  $\frac{1}{2}$  tsp. baking powder  
 $\frac{1}{4}$  tsp. salt

##### **Wet Ingredients**

1 cup (2 sticks) softened butter  
4 egg WHITES  
1 cup milk  
1 tsp. vanilla extract  
1 package of Gel Food Colors  
(need only red and blue)

All above ingredients should be at  
room temperature.

##### **BUTTER FROSTING Ingredients**

1 cup softened butter  
1 tsp. vanilla  
3 cups powdered sugar  
2-3 Tbsp. milk

#### **CUPCAKE DIRECTIONS**

**Line** cupcake tins with cupcake paper liners.  
**Cream** butter and sugar in a large bowl.  
**Add** egg whites and vanilla. **Beat** until well incorporated.  
**Whisk** flour, baking powder and salt in a medium size bowl.  
**Add** the dry mixture to the wet mixture a little at a time, alternating with milk until well incorporated.  
**Divide** mixture evenly into 3 small bowls (about  $1\frac{1}{3}$  cups in each bowl).  
**Set** aside one bowl for the white middle layer.  
**Add** red gel food color to one bowl. Mix well.  
**Add** blue gel food color to the other bowl. Mix well.  
**Place** a heaping tablespoon of the blue mixture into the bottom of the cupcake liner until batter is used up.  
**Do** the same with the white batter.  
**Do** the same with the red batter.  
**Put** the tins in the oven for 18-20 minutes or until a toothpick inserted into the center comes out clean.  
**Cool** completely before frosting.

#### **FROSTING DIRECTIONS**

**In a large bowl**, SLOWLY blend a small amount of sugar at a time into the softened butter.  
**Blend** in vanilla and 2 Tbsp. milk.  
**Add** more milk as needed until a spreading consistency.

**Cut** the tops of the cupcakes with a knife in a circle with the end pointed in to create a cone shape that is removed.  
**Put** a scoop of frosting in the hole, return the top to the cupcake. Press lightly.

## **DIVISION 14 – Clothing**

- ✿ Read [Fair General Rules](#) and [Hall Exhibit General Rules](#).
- ✿ **ALL EXHIBITORS ARE ENCOURAGED TO PARTICIPATE IN THE FASHION REVUE.**  
**See Fashion Revue information at end of this Division.**
- ✿ **Items must be clean!**

### **Danish Points: 12 - 9 - 6**

1401	First year sewer - any garment	1406	Pajamas or Nightgown	1413	Male's Trousers
1402	Apron	1407	Outdoor Gear (e.g. backpack) limit of 3 different entries	1414	Jump Suit
1403	Accessories - limit of 3 different entries	1408	Jumper	1415	Quilted Garment
1404	Shorts	1409	Slacks	1416	Jacket
1405	Sweatshirt	1410	Skirt	1417	Vest
		1411	Blouse	1418	Washable Dress
		1412	Male's Shirt	1419	Non-washable Dress

### **Danish Points: 15 - 12 - 8**

1420	Party Dress	1422	Suit - Pants and Jacket	1424	Suit - Skirt and Jacket
1421	Prom Gown	1423	Coat or Cloak		

### **Danish Points: 12 - 9 - 6**

- 1425 Made over article of clothing (an original garment that has been altered or reconstructed). Include a brief description attached to the garment explaining what it was and what changes were made.
- 1426 Anything But Fabric Outfit - create an outfit using anything but fabric. Use duct tape, plastic bags, paper, soda boxes, newspaper, magazines, snack bags, tinsel, caution tape, recycled materials, etc. to create a one of a kind design.
- 1427 Smart Shop Outfit - refer to "Class 1437: *Smart Shop Fashion Revue*" for details.
- 1428 Any other wearable item not mentioned - limit of different 3 items; include a brief description
- 1429 Equipped Sewing Container - include list of materials and their use

### **Danish Points: 25 - 20 - 15**

- 1430 Coordinated wardrobe of 3 to 5 garments - include a brief description of the garments

### **Fashion Revue** at 3:00 p.m.

**All Junior and Senior Fashion Revue participants will be awarded 10 Premium Points.** Additional awards will be presented to the best overall Junior participant and the best overall Senior participant. Cloverbuds may enter the Fashion Revue. **Submit a detailed description of your garment or outfit to the Fair Secretary by Friday evening, July 24<sup>th</sup>.**

- 1435 Exhibitor Garment Revue - Experience the excitement of modeling a garment you made.
- 1436 Anything But Fabric Outfit Revue - Include in your description the non-fabrics used to make your garment and how it was constructed.
- 1437 Smart Shop Fashion Revue - The purpose of this class is to encourage wise decision making as consumers of clothing in areas of price, garment construction, understanding of fiber content, cost comparison, garment care, cost, and appropriateness for model.

## **DIVISION 14 - Clothing (cont.)**

### ***Fashion Revue (continued)***

#### **General Guidelines for 1437 Smart Shop Fashion:**

- ✿ Shop, select, and purchase one or more garment(s), then combine it with accessories or other garment(s) from your current wardrobe to create a coordinated outfit.
- ✿ The maximum amount that can be spent for garment(s) purchased for this program is \$ 50.00.
- ✿ Smart Shop Fashions must have been purchased since October 1, 2025.
- ✿ Garment make-overs can also be showcased in the program as long as the date of purchase was after October 1, 2025 and does not exceed the \$ 50.00 limit.

Your “exhibit” must include (but is not limited to) the following information in a form of your choosing that is also suitable for review by judges during a fashion show (such as type written pages, a mini scrapbook, a poster, etc.):

- ✿ Briefly describe the garment/outfit you purchased that you will be modeling.
- ✿ How does this purchase fit within your wardrobe goals?
- ✿ How does this garment enhance your skin tone and hair coloring?
- ✿ What specific fashion details do you like about this ensemble?
- ✿ Where do you plan to wear this outfit?
- ✿ Describe the comparison shopping that you did and the type of store where it was purchased (thrift, specialty, consignment, department, online, etc.).
- ✿ Cost of each garment, its fiber content, and care instructions.
- ✿ Were any of your accessories purchased within the stated budget?
- ✿ Describe the accessories you plan to wear with this outfit whether part of the budget or not.

Submit to the Fair Secretary, a narration that can be used on stage for the Fashion Revue. Include information about you, your garment or outfit, your 4-H experiences, and your Smart Shop Fashion adventure.

### ***Lead Line and Wool Competition***

See competition information in the **Sheep Division** on page 20.



# **DIVISION 15 - Knitting**



Read [Fair General Rules](#) and [Hall Exhibit General Rules](#).  
**Items must be clean!**

## **Hand Knitting**

<b>Danish Points</b>			<b>Danish Points</b>		
1501	First year knitter - any article	12 - 9 - 6	1512	Scarf and Hat Set	15 - 12 - 9
1502	Sweater - slip on	15 - 12 - 9	1513	Afghan - approx. 4' x 5'	18 - 15 - 11
1503	Sweater - cardigan	15 - 12 - 9	1514	Baby article	10 - 8 - 6
1504	Sweater Set - coordinated	18 - 15 - 11	1515	Stole	10 - 8 - 6
1505	Slipper Socks	15 - 12 - 9	1516	Toy	10 - 8 - 6
1506	Poncho or Cape	15 - 12 - 9	1517	Other Knitted Item not mentioned - include description; limit of 3 different entries	10 - 8 - 6
1507	Mittens - 2 needles	15 - 12 - 9			
1508	Mittens - 4 needles	15 - 12 - 9			
1509	Vest	15 - 12 - 9	1518	Coaster	7 - 5 - 3
1510	Scarf	10 - 8 - 6	1519	Lap Blanket	10 - 8 - 6
1511	Hat	10 - 8 - 6			

## **Loom Knitting**

<b>Danish Points</b>			<b>Danish Points</b>		
1525	First year knitter - any article	12 - 9 - 6	1536	Scarf and Hat Set	15 - 12 - 9
1526	Sweater - slip on	15 - 12 - 9	1537	Afghan - approx. 4' x 5'	18 - 15 - 11
1527	Sweater - cardigan	15 - 12 - 9	1538	Baby article	10 - 8 - 6
1528	Sweater Set - coordinated	18 - 15 - 11	1539	Stole	10 - 8 - 6
1529	Slipper Socks	15 - 12 - 9	1540	Toy	10 - 8 - 6
1530	Poncho or Cape	15 - 12 - 9	1541	Other Knitted Item not mentioned - include description; limit of 3 different entries	10 - 8 - 6
1531	Mittens - 2 needles	15 - 12 - 9			
1532	Mittens - 4 needles	15 - 12 - 9			
1533	Vest	15 - 12 - 9	1542	Coaster	7 - 5 - 3
1534	Scarf	10 - 8 - 6	1543	Lap Blanket	10 - 8 - 6
1535	Hat	10 - 8 - 6			

## **Machine Knitting**

<b>Danish Points</b>			<b>Danish Points</b>		
1550	First year knitter - any article	12 - 9 - 6	1561	Scarf and Hat Set	15 - 12 - 9
1551	Sweater - slip on	15 - 12 - 9	1562	Afghan - approx. 4' x 5'	18 - 15 - 11
1552	Sweater - cardigan	15 - 12 - 9	1563	Baby article	10 - 8 - 6
1553	Sweater Set - coordinated	18 - 15 - 11	1564	Stole	10 - 8 - 6
1554	Slipper Socks	15 - 12 - 9	1565	Toy	10 - 8 - 6
1555	Poncho or Cape	15 - 12 - 9	1566	Other Knitted Item not mentioned - include description; limit of 3 different entries	10 - 8 - 6
1556	Mittens - 2 needles	15 - 12 - 9			
1557	Mittens - 4 needles	15 - 12 - 9			
1558	Vest	15 - 12 - 9	1567	Coaster	7 - 5 - 3
1559	Scarf	10 - 8 - 6	1568	Lap Blanket	10 - 8 - 6
1560	Hat	10 - 8 - 6			

## **DIVISION 16 - Crocheting**

- ❁ Read Fair General Rules and Hall Exhibit General Rules.
- ❁ **Items must be clean!**

### **Danish Points**

1601	First year crocheter - any item	8 - 6 - 4
1602	Handbag	8 - 6 - 4
1603	Belt	8 - 6 - 4
1604	Hat	8 - 6 - 4
1605	Vest	8 - 6 - 4
1606	Scarf	8 - 6 - 4
1607	Baby Article	8 - 6 - 4
1608	Shell	8 - 6 - 4
1609	Toy	8 - 6 - 4
1610	Cape or Poncho	12 - 9 - 6
1611	Sweater	12 - 9 - 6
1612	Afghan - approx. 4' x 5'	15 - 12 - 8
1613	Other Crocheted Item not mentioned above – limit of 3 different entries; include a description	8 - 6 - 4



### **The National 4-H Creed for Members**

- I believe in 4-H Club work for the opportunity it will give me to become a useful citizen.
- I believe in the training of my HEAD for the power it will give me to think, to plan, and to reason.
- I believe in the training of my HEART for the nobleness it will give me to become kind, sympathetic, and true.
- I believe in the training of my HANDS for the ability it will give me to be helpful, useful, and skillful.
- I believe in the training of my HEALTH for the strength it will give me to enjoy life, to resist disease, and to work efficiently.
- I believe in my world, my country, my state, and my community in my responsibility for their development.
- In all these things I believe, and I am willing to dedicate my efforts to their fulfillment.

# **DIVISION 16A - Quilt**

- ✿ Read [Fair General Rules](#) and [Hall Exhibit General Rules](#).
- ✿ **Items must be clean!**
- ✿ **Commercial Quilting is not allowed except in class 1699.**
- ✿ Include a short description to help the judges understand the level of difficulty and the process used.
- ✿ Refer to the *Quilt Evaluation Rubric* on the next page for the judging criteria.

**Danish Points: 20 - 15 - 10**

## **Hand Quilting**

- 1651 Pieced Miniature - less than 20" x 20"
- 1652 Appliquéd Miniature - less than 20" x 20"
- 1653 Pieced Wall Hanging - larger than 20";  
up to 42" x 42"
- 1654 Appliquéd Wall Hanging - larger than 20";  
up to 42" x 42"
- 1655 Pieced Crib - lap size
- 1656 Appliquéd Crib - lap size
- 1657 Pieced Twin
- 1658 Appliquéd Twin
- 1659 Pieced Double, Queen, or King Size
- 1660 Appliquéd Double, Queen, or King Size
- 1661 Whole Cloth
- 1662 Hand Quilt - Group / Club / Class;  
assembled by youth
- 1663 Hand Quilt - Group / Club / Class;  
assembled by youth and adult
- 1664 Other Hand Quilted Item not mentioned -  
limit of 3 different entries; include description

## **Machine Quilting**

- 1667 Pieced Miniature - less than 20" x 20"
- 1668 Appliquéd Miniature - less than 20" x 20"
- 1669 Pieced Wall Hanging - larger than 20";  
up to 42" x 42"
- 1670 Appliquéd Wall Hanging - larger than 20";  
up to 42" x 42"
- 1671 Pieced Crib - lap size
- 1672 Appliquéd Crib - lap size
- 1673 Pieced Twin
- 1674 Appliquéd Twin
- 1675 Pieced Double, Queen, or King Size
- 1676 Appliquéd Double, Queen, or King Size
- 1677 Whole Cloth
- 1678 Machine Quilt - Group / Club / Class;  
assembled by youth
- 1679 Machine Quilt - Group / Club / Class;  
assembled by youth and adult
- 1680 Other Machine Quilted Item not mentioned;  
limit of 3 different entries; include a  
description

## **Tie Quilting**

- 1683 Pieced Miniature - less than 20" x 20"
- 1684 Appliquéd Miniature - less than 20" x 20"
- 1685 Pieced Wall Hanging - larger than 20";  
up to 42" x 42"
- 1686 Appliquéd Wall Hanging - larger than 20";  
up to 42" x 42"
- 1687 Pieced Crib - lap size
- 1688 Appliquéd Crib - lap size
- 1689 Pieced Twin
- 1690 Appliquéd Twin
- 1691 Pieced Double, Queen, or King Size
- 1692 Appliquéd Double, Queen, or King Size
- 1693 Whole Cloth
- 1694 Tie Quilt - Group / Club / Class;  
assembled by youth
- 1695 Tie Quilt - Group / Club / Class;  
assembled by youth and adult
- 1696 Other Tie Quilted Item not mentioned -  
limit of 3 different entries; include a  
description

## **Kit Quilting**

- 1697 Kit Created Work - entry must credit the kit  
used; include a description
- 1698 Custom Designed Block - entry must be  
custom and not from a pattern

## **Commercial Quilting**

- 1699 Professionally Finished / Longarm -  
entry must credit the collaborative  
source



# **DIVISION 16A - Quilt (cont.)**

## QUILT EVALUATION RUBRIC

Exhibitor Name: \_\_\_\_\_

Age Division: JUNIOR SENIOR

Quilt Title: \_\_\_\_\_ Judge: \_\_\_\_\_

Scoring Key: 2=Beginning 3=Developing 4=Good 5=Excellent

### 1. OVERALL APPEARANCE (25 pts)

CRITERIA	2 Beginning	3 Developing	4 Good	5 Excellent
Clean and cared for	<input type="checkbox"/>	<input type="checkbox"/>	<input type="checkbox"/>	<input type="checkbox"/>
Edges lie flat	<input type="checkbox"/>	<input type="checkbox"/>	<input type="checkbox"/>	<input type="checkbox"/>
Threads trimmed	<input type="checkbox"/>	<input type="checkbox"/>	<input type="checkbox"/>	<input type="checkbox"/>
Color and fabrics choices	<input type="checkbox"/>	<input type="checkbox"/>	<input type="checkbox"/>	<input type="checkbox"/>
Patterns, textures, added elements	<input type="checkbox"/>	<input type="checkbox"/>	<input type="checkbox"/>	<input type="checkbox"/>

Section Score: \_\_\_\_/25

### 2. CONSTRUCTION (25 pts)

CRITERIA	2 Beginning	3 Developing	4 Good	5 Excellent
Seams secure	<input type="checkbox"/>	<input type="checkbox"/>	<input type="checkbox"/>	<input type="checkbox"/>
Seams lie flat (no puckers)	<input type="checkbox"/>	<input type="checkbox"/>	<input type="checkbox"/>	<input type="checkbox"/>
Corners match and points align	<input type="checkbox"/>	<input type="checkbox"/>	<input type="checkbox"/>	<input type="checkbox"/>
Materials appropriate for quilt type	<input type="checkbox"/>	<input type="checkbox"/>	<input type="checkbox"/>	<input type="checkbox"/>
Batting appears to lay flat	<input type="checkbox"/>	<input type="checkbox"/>	<input type="checkbox"/>	<input type="checkbox"/>

Section Score: \_\_\_\_/25

### 3. FINISHING & QUILTING (25 pts)

CRITERIA	2 Beginning	3 Developing	4 Good	5 Excellent
Stitches or ties secure	<input type="checkbox"/>	<input type="checkbox"/>	<input type="checkbox"/>	<input type="checkbox"/>
Tension: stitches even length/spacing	<input type="checkbox"/>	<input type="checkbox"/>	<input type="checkbox"/>	<input type="checkbox"/>
Thread color appropriate	<input type="checkbox"/>	<input type="checkbox"/>	<input type="checkbox"/>	<input type="checkbox"/>
Binding neat and secure	<input type="checkbox"/>	<input type="checkbox"/>	<input type="checkbox"/>	<input type="checkbox"/>
Presentation of entry	<input type="checkbox"/>	<input type="checkbox"/>	<input type="checkbox"/>	<input type="checkbox"/>

Section Score: \_\_\_\_/25

### 4. CREATIVITY & LEARNING (25 pts)

CRITERIA	2 Beginning	3 Developing	4 Good	5 Excellent
Planning and effort shown	<input type="checkbox"/>	<input type="checkbox"/>	<input type="checkbox"/>	<input type="checkbox"/>
Difficulty appropriate for age	<input type="checkbox"/>	<input type="checkbox"/>	<input type="checkbox"/>	<input type="checkbox"/>
Creativity / originality	<input type="checkbox"/>	<input type="checkbox"/>	<input type="checkbox"/>	<input type="checkbox"/>
Skill growth demonstrated	<input type="checkbox"/>	<input type="checkbox"/>	<input type="checkbox"/>	<input type="checkbox"/>
Short written description provided	<input type="checkbox"/>	<input type="checkbox"/>	<input type="checkbox"/>	<input type="checkbox"/>

Section Score: \_\_\_\_/25

TOTAL SCORE: \_\_\_\_/100

Ribbon:  Blue (90-100)  Red (80-89)  White (50-79)  Participation (< 50)

Strength(s): \_\_\_\_\_

Suggestion(s) for Improvement: \_\_\_\_\_

Judge's signature: \_\_\_\_\_

## **DIVISION 17 - Needle Craft**

- ✿ Read [Fair General Rules](#) and [Hall Exhibit General Rules](#).
- ✿ **Items must be clean, finished and ready to be displayed or used.**

**Danish Points: 12 - 9 - 6**  
**15 - 12 - 9 for Classes 1731-1734**

1701	Candle Wicking	1723	Needlepoint - large plastic
1702	Latch Hook - original design	1724	Needlepoint - small canvas or material
1703	Latch Hook - prepared design	1725	Needlepoint - large canvas or material
1704	Fringed Article - 1st year exhibitor only	1726	Patchwork Article
1705	Fabric Stuffed Toy	1727	Doll Clothes
1706	Embroidery	1728	Stitchery
1707	Crewel	1729	Flag or Banner - stitched
1708	Basket Weave Stitch	1730	Counted Cross Stitch Pillow
1709	Smocking	1731	Counted Cross Stitch Picture - framed by exhibitor
1710	Decorated Apron	1732	Counted Cross Stitch Picture - framed professionally
1711	Pillowcase	1733	Other Counted Cross Stitch - include description; e.g. towel, ornament, etc.
1712	Single Pillow - handmade	1734	Cross Stitch on Waste Canvas
1713	Single Pillow - machine made	1735	Other Needlecraft Item not mentioned - include description; limit 3 entries
1714	Needle Felting	1736	Coaster
1715	Pair of Pillows - handmade	1737	Lap Blanket
1716	Pair of Pillows - machine made		
1717	Quilted Article - by machine		
1718	Quilted Article - by hand		
1719	Swedish Weaving		
1720	Pin Cushion		
1721	Tote Bag		
1722	Needlepoint - small plastic		



\*\*\*\*\*

## **DIVISION 17A - Machine Embroidery**

- ✿ Read [Fair General Rules](#) and [Hall Exhibit General Rules](#).
- ✿ **Items must be clean!**

**Danish Points: 12 - 9 - 6**

1750	Preprogrammed Design	1752	Original Digitized Design
1751	Modified Design - include a brief description of how design was modified; software used, etc.	1753	Multiple Design Combination

## **DIVISION 18 - Handmade Craft**

- ☘ Read Fair General Rules and Hall Exhibit General Rules.
- ☘ A short description should be included to help the judges understand the level of difficulty of the craft and the process used.
- ☘ Quality of craft is important - neat, finished edges, glue not visible, ready for use or display. Creativity is encouraged.
- ☘ **No kits allowed. No paint by numbers.**
- ☘ **Attach entry tag securely to exhibit.**

### **Danish Points: 8 - 6 - 4**

- |   |  |
|---|--|
| <p>1801 Acrylic Painting on Cloth</p> <p>1802 Article on Seasonal Theme - fall theme</p> <p>1803 Article on Season Theme - winter theme</p> <p>1804 Article on Season Theme - other theme</p> <p>1805 Bookmark</p> <p>1806 Bouquet of Handmade Flowers</p> <p>1807 Candle - handcrafted</p> <p>1808 Casting (plastic, plaster, green ware, resin) - precast</p> <p>1809 Casting (plastic, plaster, green ware, resin) - original</p> <p>1810 Clay - hand built</p> <p>1811 Clay - Potter's wheel</p> <p>1812 Decorated Metal Ware - stencil, tole, etc.</p> <p>1813 Decorated Shirt - no stitching or needlework</p> <p>1814 Decoupage</p> <p>1815 Doll - apple, cornhusk, etc.</p> <p>1816 Item using Natural/Dried Materials</p> <p>1817 Etching - metal or glass</p> <p>1818 Decorated Egg - styrofoam, wood, shell</p> <p>1819 Flag or Banner - not stitched</p> <p>1820 Fleece or Felt - non-sewn item</p> <p>1821 Glista Glass - foil picture</p> <p>1822 Jewelry - handmade</p> <p>1823 Liquid Embroidery</p> <p>1824 Leather Item</p> <p>1825 Macramé</p> <p>1826 Magnet</p> <p>1827 Memory Book</p> <p>1828 Metal Punch</p> <p>1829 Mobile - bring something to hang it on</p> <p>1830 Origami - paper folding</p> <p>1831 Papier mache'</p> <p>1832 Recycle Craft - paper, glass, tin, etc.</p> <p>1833 Rock Creature</p> <p>1834 Rug Craft</p> | <p>1835 Sand Terrarium / Sand Art</p> <p>1836 Shadow Box</p> <p>1837 Scherenschnitte - paper cutting</p> <p>1838 Silhouette</p> <p>1839 Slate Painting</p> <p>1840 Stained Glass Article</p> <p>1841 Stenciled Article</p> <p>1842 Stick Craft - toothpicks, clothespins, popsicle sticks, etc.</p> <p>1843 Symmography - string pictures</p> <p>1844 Weaving - reed</p> <p>1845 Weaving - loom</p> <p>1846 Wooden Item - purchased and decorated</p> <p>1847 Woven Item other than loom or reed</p> <p>1848 Wreath - straw, grapevine, etc.</p> <p>1849 Fun Foam - Cloverbuds and Juniors only</p> <p>1850 Card - embossed, cut and pierced, stenciled, stamped, etc.</p> <p>1851 Other Hand-Made Craft - <b>only items not in a class listed above</b>; list item on entry form; limit 3 different entries</p> |
|---|--|

### **Danish Points: 15 - 12 - 8**

**Scarecrow** - must be free standing; maximum 6 feet tall

- |      |  |
|------|--|
| 1860 | Scarecrow constructed by an individual           |
| 1861 | Scarecrow constructed by a Club, Group or Family |



## Division 19 - Handmade Craft Display

- ✿ Read [Fair General Rules](#) and [Hall Exhibit General Rules](#).
- ✿ Each display will be judged on quality, originally, and display presentation.
- ✿ Each display must not exceed 2½ feet in depth.
- ✿ Exhibitor may supply a backdrop for the display, if needed.
- ✿ An exhibitor may enter up to 3 different displays.



**Danish Points: 15 - 12 - 8**

- 1901 Display of 5 or more items of one type of hand-made craft
- 1902 Display of a craft item done in 3 or more different techniques (e.g. T-shirts - painted, needlework added, tie-dyed)

\*\*\*\*\*

## Division 19A - Hobby Display

- ✿ Read [Fair General Rules](#) and [Hall Exhibit General Rules](#).
- ✿ Each display will be judged on quality, originally, and display presentation.
- ✿ Each display must not exceed 2½ feet in depth.
- ✿ Exhibitor may supply a backdrop for the display, if needed.
- ✿ An exhibitor may enter up to 3 different displays.
- ✿ **Required:** on a small card, explain how or why you chose this hobby, where the items were collected, and any other pertinent information.

**Danish Points: 10 - 8 - 6**

- 1925 Collection of at least 10 different items of one type of a hobby theme (e.g. model cars, stamp collection)

\*\*\*\*\*



# **DIVISION 20 - 4-H Poster Contest**

- ✻ Read Fair General Rules and Hall Exhibit General Rules.
- ✻ Only one entry per class.
- ✻ Minimum size of poster is 14" x 22".
- ✻ Copyrighted characters are not allowed (i.e. Snoopy, Disney, or cartoon characters, etc.).
- ✻ Include name, address, and age of exhibitor on back of poster - **not on front**.

<b>SCORE SHEET</b>	
<b>Artwork - 40 points</b>	<b>Message (Idea) - 60 points</b>
<p style="text-align: center;">Simple and neat Center of interest Unity - artwork ties together Balance - well planned; no large empty spaces; not too cluttered General artwork Good color combination Lettering easy to read 4-H Clover included</p>	<p style="text-align: center;">Eye catching Purpose - tells you something Simple and brief</p>




**Danish Points: 8 - 6 - 4**

2001 General 4-H  
2002 Environmental

2003 Social Issues  
2004 Volunteerism


2005 Health  
2006 Open Theme

\*\*\*\*\*



### **4-H Pledge**

***I Pledge...***  
*My HEAD to clearer thinking,  
 My HEART to greater loyalty,  
 My HANDS to larger service, and  
 My HEALTH for better living,  
 for My Club, My Community, My Country, and My World.*



*The pledge tells what 4-H is all about. 4-H has as its goal the four-fold development of youth: Head, Heart, Hands, and Health. The pledge was adopted by the delegates to the 1927 National 4-H Club Camp in Washington, D.C. State club leaders voted for and adopted the pledge for universal use, The phrase "and my world" was added in 1973. The saying of the pledge has a prominent place in 4-H activities at regular 4-H meetings and other club events.*

## **DIVISION 21 - Art Show**



- ✿ Read Fair General Rules and Hall Exhibit General Rules.
- ✿ **One entry per class.**
- ✿ **Presentation is an important part of your artwork.**
- ✿ **Artwork must be mounted, matted, and/or framed on a rigid backing.**
- ✿ **GLASS IS NOT ALLOWED.** Plexiglas or plastic is acceptable. The 4-H Fair Association will not be responsible for damage.
- ✿ **No paint by numbers will be accepted.**
- ✿ Artwork should not be of copyrighted characters (e.g. Snoopy, Disney characters, etc.)
- ✿ Paintings may be signed. Art exhibitors are encouraged to title their exhibits.
- ✿ Sculptures must be freestanding.
- ✿ "Still life" means a picture of lifeless object(s) (e.g. vase of flowers, bird's nest, food, books, personal effects, household items, etc.)
- ✿ **For the Judge** - Please include a brief history of how long you have been doing this type of art, if classes were taken, or if you are self-taught, etc. Attach information to artwork on a small index card.

### **Danish Points: 10 - 8 - 6**

2101 Acrylic Painting - abstract	2123 Pencil Drawing - black and white
2102 Acrylic Painting - animal	2124 Pencil Drawing - color
2103 Acrylic Painting - landscape	2125 Finger Painting - Cloverbuds and Juniors
2104 Acrylic Painting - seascape	2126 Crayon Drawing - Cloverbuds and Juniors
2105 Acrylic Painting - portrait	2127 Marker Drawing - Cloverbuds and Juniors
2106 Acrylic Painting - still life	2128 Block Print
2107 Oil Painting - abstract	2129 Calligraphy
2108 Oil Painting - animal	2130 Collage
2109 Oil Painting - landscape	2131 Illustration - include writing with image
2110 Oil Painting - seascape	2132 Mixed Media - include media description
2111 Oil Painting - portrait	2133 Fluid Art - paint pouring
2112 Oil Painting - still life	2140 Sculpture - ceramic
2113 Water Color Painting - abstract	2141 Sculpture - metal
2114 Water Color Painting - animal	2142 Sculpture - plaster
2115 Water Color Painting - landscape	2143 Sculpture - wood
2116 Water Color Painting - seascape	2144 Sculpture - other sculpture not mentioned include a description
2117 Water Color Painting - portrait	2145 Wood burning
2118 Water Color Painting - still life	2146 Wood carving
2119 Charcoal Drawing	2150 Other Art Entry not mentioned - limit of 3 different entries; include description
2120 Pastel Drawing	
2121 Ink Drawing - black and white	
2122 Ink Drawing - color	



**4-H Colors**

**Green and White**

*Green symbolizes springtime,  
life, and youth,*

*White symbolizes purity and high ideals.*



## **DIVISION 22 - Handicraft**

☘ Read Fair General Rules and Hall Exhibit General Rules.



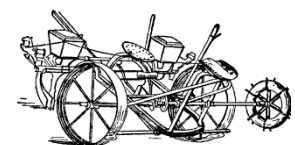
**Danish Points: 10 - 8 - 6 for Classes 2201 - 2217, 2226, 2230, 2234 - 2258**  
**18 - 15 - 11 for Classes 2218 - 2225, 2227 - 2229, 2231 - 2233**

2201	Bookcase	2231	Flying Model Airplane (non-plastic) - scale
2202	Bread Box	2232	Flying Model Airplane (non-plastic) - no scale
2203	Bird Feeder	2233	Model Rocketry - on a small card, describe how it was made and how it functions
2204	Bird House	2234	Refinished Furniture - on a small card, explain the refinishing process; include a "before" picture, if available.
2205	Foot Stool	2235	Artificial Lure
2206	Hand Made Sign	2236	Hand Tied Fly
2207	Wooden Toy	2237	Beginner Basketry - coiled
2208	Rack - gun, fishing pole, bat, etc.	2238	Beginner Basketry - combination of materials
2209	Knick Knack Shelf	2239	Beginner Basketry - miniature
2210	Knife Holder	2240	Beginner Basketry - Nantucket, small
2211	Lawn Ornament	2241	Beginner Basketry - Nantucket, medium
2212	Tie Rack	2242	Beginner Basketry - Nantucket, large
2213	Tool Box	2243	Beginner Basketry - oriental design
2214	Homemade Equipment for Animals - include a brief description	2244	Beginner Basketry - ribbed
2215	Pre-cut Wooden Item - to be judged on assembly and finish	2245	Beginner Basketry - round reed
2216	Miniature Furniture	2246	Beginner Basketry - splint
2217	Small Piece of Furniture	2247	Beginner Basketry - unusual; does not fit into a category listed above
2218	Large Piece of Furniture	2248	Advanced Basketry - coiled
2219	End Table	2249	Advanced Basketry - combination of materials
2220	Coffee Table	2250	Advanced Basketry - miniature
2221	Chair	2251	Advanced Basketry - Nantucket, small
2222	Band Saw box	2252	Advanced Basketry - Nantucket, medium
2223	Wood Turned box	2253	Advanced Basketry - oriental design
2224	Wooden Jewelry box	2254	Advanced Basketry - ribbed
2225	Wooden Clock	2255	Advanced Basketry - round reed
2226	Other Wooden Item not mentioned - limit of 3 different entries; include a brief description	2256	Advanced Basketry - splint
2227	Wood Turning Faceplate - bowl, plate, etc.	2257	Advanced Basketry - unusual; does not fit into a category listed above
2228	Wood Turning Spindle - candlestick holder, furniture spindle, etc.	2258	Other Handicraft Item not mentioned - limit of 3 different entries; include a brief description
2229	Miniature Room Setting - built from scratch		
2230	Other Metal Item not mentioned - include a brief description		

\*\*\*\*\*

## **DIVISION 23 - Agricultural Mechanics**

☘ Read Fair General Rules and Hall Exhibit General Rules.  
 ☘ A piece of agricultural equipment made, repaired, or rebuilt.



**Danish Points: 15 - 12 - 8**

2350	Electrical	2354	Sheet Metal
2351	Mechanical	2355	Other Mechanical Item not mentioned - include a brief description
2352	Wooden		
2353	Welded		

# **DIVISION 24 - Graphic Art**

☘ Read Fair General Rules and Hall Exhibit General Rules.

**Danish Points: 8 - 6 - 4**

- 2401 Single Color - sample or collection of work using only one color
- 2402 Multiple Color - sample or collection of work using more than one color
- 2403 Architectural Drafting
- 2404 Computer Drafting
- 2405 Electrical Drafting
- 2406 Mechanical Drafting
- 2407 Computer Graphics with a 4-H Theme
- 2409 Advertising Design - deals with creating visual artwork (i.e. magazine and newspaper ads, infographics, display ads, direct mail/personal ads, social media ads, email templates, video ads, websites/blogs and other materials promoting products or services).
- 2410 Corporate Design - used to define brand through the artistic representation (i.e. logo, colors, modern typography, quality, branding and corporate culture).
- 2411 Art and Illustration - skills in this category are unique styles, creativity, communication, drawing, IT skills and branding.
- 2412 Environmental Design - a broad type of design that connects people to places and explains a story through various elements like colors, patterns, typography, materials, etc. Often used in professional disciplines such as landscape, interior, architectural and industrial design. Skills include a strong visual sense, communication skills, signage printing, office branding, exhibition/exhibit design and blueprint/digital design.
- 2413 Packaging Design - used as a marketing tool on a regular basis to grab customers' attention quickly. Must have knowledge of industrial design, branding, current trends, illustrations and manufacturing (i.e. box and paper, bottle, bag, can/container, plastic, glass and metals).
- 2414 Publication Design - deals with books, magazines, annual reports, directories, newspapers, journals, comics and product catalogs. Crucial skills to be familiar with are typography, design and layout, illustrations, infographic and color management. An understanding of publication types and messages will help express the theme.
- 2415 UI Design / User Interface Design - skills of UI/UX principles, responsive web design, minimalist design, interface elements, HTML/CSS/JavaScript, color/brightness/contrast and brand consistency.
- 2416 Motion Design - a process of designing elements like typography, imagery, audio, video or animation that are in motion. Used in online media, television, website and other sectors. Communicates with the viewer and expresses the depth of the story in a compelling way (i.e. advertisements, animated logos/text, film title design, presentations, websites and banners, video games and GIFs).
- 2417 Website Design - deals with the web layout, images, colors, textual elements and many more to achieve the best user experience. Skills of visual design, print design, HTML/CSS, color theory and design software.
- 2418 Vehicle Wrap Design - uses information along with some technical things for inspiration (i.e. sports cars, pickup trucks, vans/mini-vans, sports utility vehicles, sedan, coupe, etc.).
- 2419 Stationery Design - used for branding throughout an organization (i.e. writing equipment, envelope, business card, postcard, letterhead).
- 2420 Book Cover or Mockup Design - "gateway to the book's soul"; helps to give the finishing touch to the actual content (i.e. notebook, open book, hardcover open book, square book, landscape book, stacked book).



# **DIVISION 25 - Photography**

- ✿ Read Fair General Rules and Hall Exhibit General Rules.
- ✿ **All photographs must be 5 inches by 7 inches and securely matted to 8 inches by 10 inches** unless otherwise noted.
- ✿ Please note that matting is judged - your choice of color. Overall presentation is considered.
- ✿ No hangers or frames of any kind are allowed.
- ✿ No cardboard or scotch taped items are allowed.
- ✿ No glass or plexiglass are allowed.
- ✿ No flush mounting allowed.
- ✿ “Still life” means a picture of **lifeless** object(s) (e.g. vase of flowers, bird’s nest, food, books, personal effects, household items, etc.)
- ✿ Any exhibit not complying with these specifications will be disqualified.
- ✿ The 4-H Fair Association will not be responsible for damage.
- ✿ All edited photographs must be entered in the *Photograph Editing Class 2574*.

**Danish Points: 5 - 4 - 3**

**Danish Points: 5 - 4 - 3**

## **Black and White Photography**

## **Color Photography**

- 2501 Abstract
- 2502 Action
- 2503 Agriculture - anything related to farming or gardening
- 2504 Architecture
- 2505 Flower
- 2506 Historical - identify with a label
- 2507 Photojournalism - news / sports
- 2508 People
- 2509 Person or People with Animal(s)
- 2510 Pet(s) - domesticated animal(s)
- 2511 Portrait
- 2512 Scenery/Landscape
- 2513 Selfie
- 2514 Still Life
- 2515 Sunrise/Sunset
- 2516 Underwater
- 2517 Waterscape/Seascape
- 2518 Wildlife - any animal in nature; including birds, insects, reptiles, mammals, etc.
- 2519 Lightning/Fireworks/Night Display
- 2525 Other photograph not mentioned - limit of 3 different entries; include description

- 2530 Abstract
- 2531 Action
- 2532 Agriculture - anything related to farming or gardening
- 2533 Architecture
- 2534 Flower
- 2535 Historical - identify with a label
- 2536 Photojournalism – news / sports
- 2337 People
- 2538 Person or People with Animal(s)
- 2539 Pet(s) - domesticated animal(s)
- 2540 Portrait
- 2541 Scenery/Landscape
- 2542 Selfie
- 2543 Still Life
- 2544 Sunrise/Sunset
- 2545 Underwater
- 2546 Waterscape/Seascape
- 2547 Wildlife - any animal in nature; including birds, insects, reptiles, mammals, etc.
- 2548 Lightning/Fireworks/Night Display
- 2555 Other photograph not mentioned - limit of 3 different entries; include a description

## **4-H Photographs**

**Danish Points**

- |      |   |           |
|------|---|-----------|
| 2560 | Single color or black and white photograph from a previous 4-H or Youth Fair  | 5 - 4 - 3 |
| 2561 | Single photograph of a 4-H project or activity  | 5 - 4 - 3 |
| 2562 | Collection of 3 to 5 photographs from a previous 4-H or Youth Fair  | 7 - 6 - 5 |
| 2563 | 4-H Picture Story - minimum of 6 different photographs showing a phase of the exhibitor’s project; include captions | 7 - 6 - 5 |

## **DIVISION 25 - Photography (cont.)**

### **Other**

2570	Single photograph using a photographic technique; attach a description of the technique. Up to 3 photographs may be entered, each using a different technique.	5 - 4 - 3
2571	Collection of 3 to 5 photographs using a photographic technique; attach a description of the technique. Up to 3 collections may be entered, each using a different technique.	7 - 6 - 5
2572	Handmade photographic equipment; attach a description of what it is, how it was made, and how it is used.	7 - 6 - 5

### **Danish Points**

2573	Collection of 3 to 5 photographs with only one theme or subject.	7 - 6 - 5
2574	Photograph editing - use of editing software; include before and after photographs; limit of 3 different sets of entries	7 - 6 - 5

### **Developed and Printed by the Exhibitor - Black and White or Color**

If you have entries, please contact Jeanne Tippett, the 4-H Fair Association Secretary, at (413) 592-1792 for class number assignments.

2575	MAFA State Photography Competition	<b>Danish Points 5 - 4 - 3</b>
------	------------------------------------	--------------------------------

### **MAFA State Photography Competition Information**

The Massachusetts Agricultural Fair Association (MAFA) hosts a statewide photography contest. The first place winner from each member Fair will be judged at the Annual MAFA convention in November. The winning photographs will be featured in MAFA and Massachusetts Department of Agricultural Resources (MDAR) publications. The winning photographers will receive special recognition and passes to many Massachusetts Fairs.

#### **Contest Rules and Regulations**

- ✿ The photograph must be exhibited in a MAFA member's 2026 Fair by a non-professional adult or youth.
- ✿ The subject of the photograph must be agricultural in nature and/or depicting the agricultural aspects of a Massachusetts Fair.
- ✿ The photograph must be exhibited and judged to be the best overall photograph that meets the subject criteria for this contest at the originating member Fair.
- ✿ Though photographs may be exhibited at the Fair in a certain size, frame, etc., only an 8 x 10 inch unmatted and unframed photograph will be judged at the convention. Therefore, winning photographers may need to resize and/or de-frame and de-matt the original exhibited piece before it is submitted to MAFA.
- ✿ The winning photograph will reproduce with the best quality if it is taken with a minimum of 300 dpi, but this is not a requirement for submission.
- ✿ MAFA and MDAR have the right to use the winning photograph in publications promoting agriculture in the state of Massachusetts.

# **DIVISION 26 - Science, Technology, Engineering, and Math (STEM)**

🍀 Read Fair General Rules and Hall Exhibit General Rules.

**Danish Points: 8 - 6 - 4**

## **Science**

- 2601 First Aid Kit for animals - list contents of kit on a small card
- 2602 First Aid Kit for people - list contents of kit on a small card
- 2605 Go Green Recycle/Upcycle - create a new item from upcycled material; include a brief description on a small card
- 2607 Handmade Soap - melt and pour process
- 2608 Handmade Soap - cold press process
- 2609 Handmade Soap - lye process
- 2610 Handmade Slime - include a brief description listing materials and process

**Classes 2615 - 2619: Include a brief description why and how you created the project, and how it functions. Additional supporting materials requested are listed below.**

- 2615 Greenhouse Handmade
- 2616 Greenhouse from a Kit - indicate the kit name
- 2617 Space / Astronomy Project Handmade
- 2618 Space / Astronomy Project from a Kit - indicate the kit name
- 2619 Miscellaneous Science Project - any other science related program not mentioned; limit 3 different projects

## **Technology**

**Danish Points: 8 - 6 - 4**

**Classes 2622 - 2628: Include a brief description why and how you created the project, and how it functions. Additional supporting materials requested are listed below.**

- 2622 Electronic Robotics Project (handmade or kit - indicate kit name)
- 2623 Electrical Repaired
- 2624 Interactive Electrical Display
- 2625 Other Electrical item not mentioned
- 2626 3D Printed Design - any object designed and made using a 3D printer
- 2627 Short Form Video - maximum 2 minutes; can be a demonstration, stop animation, promotional or another genre

Video entries due July 16<sup>th</sup>. Videos will be judged before and showcased at the fair.

- 🍀 Digital link should be attached in the fair entry.
- 🍀 Must include a title and 4H clover.
- 🍀 Credit or reference resources and materials used, where applicable.
- 🍀 Sample storyboard and resources at: <https://ag.umass.edu/mass4h/programs/science-engineering-technology/movie-making>

- 2628 Miscellaneous Technology Project - any other technology item not mentioned; limit 3 different projects.

# **DIVISION 26 - Science, Technology, Engineering, and Math (STEM) (cont.)**

## **Engineering**

**Danish Points: 10 - 8 - 6**

**Classes 2630 - 2635: Include a brief description why and how you created the project, and how it functions. Additional supporting materials requested are listed below.**

- 2630 Lego or Other Building Blocks - motorized  
2631 Lego Structure or Other Building Blocks - replicate a building, monument, bridge, fairgrounds; include a labeled picture of your inspiration
- 2632 Bottle Rocket - 2 liter bottle  
2633 Catapult - create a working structure; handmade or kit, indicate kit name  
2634 Non-electronic Robotics Project - handmade or kit, indicate kit name  
2635 Miscellaneous Engineering Project - any other engineering item not mentioned; limit 3 different projects

## **Math**

**Danish Points: 10 - 8 - 6**

- 2640 Tangram Design - a tangram is a set of seven geometric shapes made up of five triangles (two small triangles, one medium triangle and two large triangles), a square and a parallelogram.

- ✿ Shapes may be any scale size, paper material or color
- ✿ Submission should be neatly presented on paper; no glass
- ✿ Include a description with the project; include a picture of your inspiration
- ✿ More information on tangrams available at: <https://www.hand2mind.com/glossary-of-hands-on-manipulatives/tangrams>

- 2641 Analog Game - create your own board or card game; include play instructions  
2642 Pixelation - creation using pixels; break down any image into large or small squares; neatly present submission on paper; no glass
- 2643 Miscellaneous Math Project - any other math project not mentioned; limit 3 different projects  
2645 Shoebox Float

- ✿ Upcycle a shoebox or other small box to create a parade float.
- ✿ Box size: less than 12" x 12"
- ✿ Must include a 4-H clover in the decorations
- ✿ More information and pictures available at <http://blogs.ifas.ufl.edu/cals/2021/10/08/celebrating-the-2nd-annual-cals-shoebox-parade/>
- ✿ Express your creativity and decorate your float with a patriotic theme. Go all out and have fun!

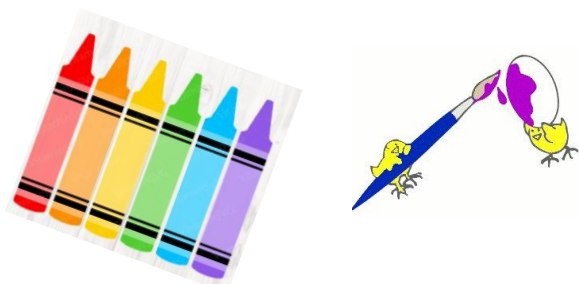


# MORE FAIR ACTIVITIES

Check social media sites and the schedule posted at the day of the Fair for additional events not mentioned on this page.

## ARTS, CRAFTS, GAMES

All Day Activities Vary



## RAFFLE

Drawings All Day

Fabulous raffle items are donated by 4-H families and area businesses. You do not have to be present to win.



## RICK SULLIVAN MEMORIAL

### 4-H KIDS FUN RUN

9:00 a.m. (rain or shine)

#### RACE CATEGORIES

5 years and under  
6- 8 years  
9-11 years  
12-15 years  
16-18 years

#### DISTANCE

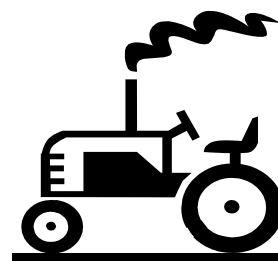
$\frac{1}{4}$  mile  
 $\frac{1}{2}$  mile  
 $\frac{3}{4}$  mile  
1 mile

Registration form located at the back of the fair book or register the day of the fair. T-shirts to the first 50 entries. Ribbons to all participants. Juice and snacks at the end of the race.

## PEDAL TRACTOR PULL

11 a.m.

Classes for ages 3-4 years,  
5-6 years, 7-8 years,  
9-10 years  
Ribbons to be awarded.  
Registration begins at 10 a.m.



## PEDAL THRU YOUTH

11 a.m.

Bring your own bike or borrow one.  
Learn bike safety and laws.  
Minor bike repairs and adjustments provided.  
Join in the bike parade.



## BOTTLE ROCKET LAUNCH

10 a.m.

(weather permitting)

4-H members will assist youth in launching rockets made from 1 or 2 liter bottles.



# OUR 2025 DONORS

*Sponsors are always needed for awards.  
Individuals, families, or businesses interested in being a sponsor, please contact  
Carey Leckie at [thumpah@aol.com](mailto:thumpah@aol.com) or call 413-297-6660.  
Donations may be sent to Carey at 463 College Highway Southwick, MA 01077.*

*The Hampden County 4-H / Youth Fair Association wishes to express our sincere appreciation  
for our donors' generosity!*

**Agawam Lion's Club** - Agawam  
**Sarah Bonini** - Southwick  
**Susan and William Bonini** - Feeding Hills  
**Catherine and Robert Cabey** - East Longmeadow  
**Calabrese Farms, LLC** - Southwick  
**Judith and James Frenette** - Southwick  
**Gran-Val Scoop, LLC** - Granville  
**Stelle Hubach** - West Springfield  
**Mark and David Modzeleski** - Agawam  
**Susan Pac** - Agawam  
**Michael Picco** - Feeding Hills  
**Kathleen and David Porter** - Westfield  
**Jeanne and Donald Prior** - Agawam  
**Bernice and Frank Rueli** - Feeding Hills  
**Joanne and Charles Simmons** - East Longmeadow  
**MaryEllen Sullivan** - Feeding Hills  
**Jeanne, Paul and Caitlynn Tippett** - Chicopee (in memory of Simonne and Richard Bienvenue)  
**Donna and Gary Turnbull** - Feeding Hills  
**Turnbull Electric, Inc.** - Feeding Hills

## SPECIAL THANKS TO:

- ✿ Eastern States Exposition for the use of their facilities.
- ✿ The Feeding Hills Congregational Church for providing meeting space for the Hampden County 4H/Youth Fair Association.
- ✿ Westfield Technical Academy Graphic Arts Department for printing our past fair books.
- ✿ East Meadow Enterprises for heavy equipment use during the Fair set-up.
- ✿ *Pedal Thru Youth* - Robert Charland and the Community Law Enforcement Partners.
- ✿ MAFA for free membership.
- ✿ Hampden County 4-H / Youth Fair Association for its leadership, dedication and donations.
- ✿ Judges for their time and expertise.
- ✿ Adult and youth volunteers who help to make the 4-H/Youth Fair a success.
- ✿ 4-H members for their support of the fair.

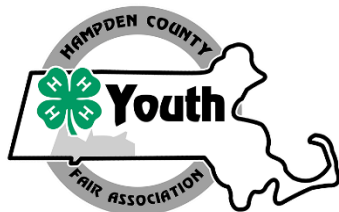


*We apologize if we missed anyone.  
Please notify the Fair Secretary if we have omitted any 2025 donor.*



# **HAMPDEN COUNTY 4-H / YOUTH FAIR**

## **JULY 25, 2026**



### **ENTRY FORMS AND AWARD APPLICATIONS**

Before filling out the entry forms, read Fair General Rules, 2026 Animal Health Rules for Fairs and Shows, Livestock General Rules and Hall Exhibit General Rules, in addition to the specific rules pertaining to the individual divisions.

When filling out the award applications, refer to Special Awards on page 6.

#### **ENTRY FORMS**

Hampden County 4-H / Youth Fair Model Horse Show .....	68
Hampden County 4-H / Youth Fair Livestock (Dairy, Beef, Working Steer, Sheep, Swine, Goat, Camelids, Poultry, Dog) .....	69
Hampden County 4H / Youth Fair Hall Exhibit .....	71
Rick Sullivan Memorial Kids Fun Run .....	73

#### **AWARD APPLICATIONS**

Zofia Demko Community Service Award .....	75
Bertha Tower Award .....	77

#### **VOLUNTEER FORMS .....** 79

Photocopy additional forms if needed or download forms from:

<http://hc4hfair.fairentry.com> or [www.hampdencounty4hfair.org](http://www.hampdencounty4hfair.org)



**HAMPDEN COUNTY 4-H / YOUTH FAIR ENTRY  
MODEL HORSE SHOW ENTRY FORM**

Entry deadline is July 15, 2026

**Mail or email entry form to:** Penny Blomgren  
P.O. Box 393  
Brimfield, MA 01010  
[pennyblomgren@aol.com](mailto:pennyblomgren@aol.com)

Name of Exhibitor: \_\_\_\_\_

Street: \_\_\_\_\_ City/Town: \_\_\_\_\_

State: \_\_\_\_\_ Zip Code: \_\_\_\_\_ Telephone: \_\_\_\_\_

Birthdate: \_\_\_\_\_ Email Address: \_\_\_\_\_  
                  mo. / day / yr.

**Division:**

- \_\_\_\_\_ Cloverbud
- \_\_\_\_\_ Junior
- \_\_\_\_\_ Senior

**Classes:**

- 1. \_\_\_\_\_ Halter
- 2. \_\_\_\_\_ Breed
- 3. \_\_\_\_\_ Performance
- 4. \_\_\_\_\_ Trail
- 5. \_\_\_\_\_ Jumping
- 6. \_\_\_\_\_ Costume
- 7. \_\_\_\_\_ Mini Class
- 8. \_\_\_\_\_ Collector's
- 9. \_\_\_\_\_ Favorite Stuffed Horse
- 10. \_\_\_\_\_ Fantasy Collection

***By signing below, we agree to leave all exhibits in place until 5 p.m. or after the awards ceremony, whichever is later on Saturday, July 25, 2026 or forfeit the premiums. At that time, it will be our responsibility to remove our exhibits from the premises or make other arrangements for removal. If neither is applicable, exhibits will be discarded.***

\_\_\_\_\_  
*Exhibitor signature*

\_\_\_\_\_  
*Parent/Guardian signature*











RICK SULLIVAN  
MEMORIAL  
4-H  
KIDS FUN RUN



WHEN: July 25, 2026

WHERE: Eastern States Exposition Grounds  
Track Adjacent to the Mallary Complex

TIME: 9:00 A.M.

T-shirts, sport drink and water provided

RACE CATEGORIES

5 years old and under	1/8 mile
6 years - 8 years old	1/4 mile
9 years - 11 years old	1/2 mile
12 years - 15 years old	1/2 mile
16 years - 18 years old	1/2 mile

Please complete the Entry and Release Form on the next page.

# RICK SULLIVAN MEMORIAL 4-H KIDS FUN RUN ENTRY and RELEASE FORM

Name \_\_\_\_\_

Street \_\_\_\_\_ City/Town \_\_\_\_\_

State \_\_\_\_\_ Zip Code \_\_\_\_\_ Telephone No. \_\_\_\_\_

Birthdate      /      /      Gender \_\_\_\_\_ E-mail \_\_\_\_\_  
mo. / day / yr.

## T-SHIRT SIZE

Indicate your T-Shirt size.

CHILD:       Small       Medium       Large

ADULT:       Small       Medium       Large       Extra Large

T-shirts may be picked up on Friday, July 24<sup>th</sup> from 6:00 to 7:00 p.m. or from 8:00 to 9:00 a.m. on Saturday, July 25<sup>th</sup>. You may also register for the Kids Fun Run during those times.

## RELEASE FROM LIABILITY

In consideration of the acceptance of my entry, I, on behalf of myself, my heirs, executors, administrators, and assignees, hereby release myself and discharge the Hampden County 4-H / Youth Fair Association, the 4-H Program, and all other sponsors or beneficiaries and representatives, successors, and assignees from any and all claims for damages and causes of action arising from or out of my participation in the 4-H Kids Fun Run. I attest that I am physically fit and that my condition has been verified by a physician. I hereby give permission to the Hampden County 4-H / Youth Fair Association and any other sponsor of this event to use all information submitted in this application and any record of this race containing my likeness. I hereby certify that I have read all the terms and conditions of this release and intend to be legally bound thereby.

Signature \_\_\_\_\_ Date \_\_\_\_\_

Signature of Parent or Guardian \_\_\_\_\_ Date \_\_\_\_\_

Incomplete or unsigned entries will not be accepted.

Mail entry to: Maryellen Sullivan, 38 Sequoia Drive, Feeding Hills, MA 01030  
or email entry to: [rudee38@comcast.net](mailto:rudee38@comcast.net)  
or text entry to: (413) 575-1759





# **BERTHA TOWER AWARD APPLICATION**

Name \_\_\_\_\_ E-mail \_\_\_\_\_  
 Street \_\_\_\_\_ City/Town \_\_\_\_\_  
 State \_\_\_\_\_ Zip Code \_\_\_\_\_ Telephone No. \_\_\_\_\_  
 Birthdate      /      /           School Grade \_\_\_\_\_      Number of years in 4-H \_\_\_\_\_  
mo. / day / yr.

**Guidelines for award recipient selection:**

- ✿ Active Hampden County 4-H member (club, community, county)
- ✿ Exhibitor at the current Hampden County 4-H/Youth Fair
- ✿ Participation in the 4-H clothing, food, food preservation, and/or needlecraft (includes knitting and crocheting) projects.

**I. List the Home Economics projects completed during the current year.**

PROJECT	ITEMS COMPLETED	EXHIBITED AT 4-H FAIR?
<b>CLOTHING</b>		
<b>FOOD PRESERVATION</b>		
<b>FOOD</b>		

(over)

PROJECT	ITEMS COMPLETED	EXHIBITED AT 4-H FAIR?
NEEDLECRAFT (include knitting and crocheting)		

**II. List your involvement in club, community, and county activities. Be specific.**

---

---

---

---

---

---

---

---

---

---

---

---

---

---

---

---

---

---

---

---

---

---

---

---

**III. Why do you feel 4-H Home Economics projects are important?**

---

---

---

---

---

---

---

---

---

---

---

---

---

---

---

---

---

---

---

---

---

---

---

---

Signature \_\_\_\_\_ Date \_\_\_\_\_

Submit the completed application to the Hampden County 4-H/Youth Fair Association Secretary by 6:00 p.m. on Friday July 24, 2026.



## I AM INTERESTED IN BECOMING A 4-H VOLUNTEER

Name \_\_\_\_\_ Telephone Number \_\_\_\_\_

Address \_\_\_\_\_ E-mail \_\_\_\_\_

Please consider becoming a 4-H volunteer. The Hampden County 4-H / Youth Fair Association needs volunteers to help organize, promote, and run the Fair. The Massachusetts 4-H / Youth Development Program in Hampden County is recruiting volunteers interested in any of the following opportunities:

- I would like to attend the Hampden County 4-H / Youth Fair Association meetings
- I would like to be a judge at the Hampden County 4-H / Youth Fair
- I would like to start a 4-H club in Hampden County
- I would like to be a judge for Visual Presentations
- I would like to discuss teaching a short-term special interest 4-H project
- I would like to volunteer to work at the Hampden County 4-H Milk Booth during the Big E
- I would like to volunteer to work at the 4-H Apple Booth during the Big E
- I would like to discuss my volunteer options

Please mail or e-mail this form to:

**Meaghan Lake, 4-H Extension Director, UMass Extension 4-H Youth Development Program**  
**100 Venture Way, Hadley, MA 01035-9462**  
 email: [meaghan.lake@umass.edu](mailto:meaghan.lake@umass.edu).



UMass Extension is a unit of the Center for Agriculture, Food & the Environment in the College of Natural Sciences. UMass Extension is an equal opportunity provider & employer, United States Department of Agriculture cooperating. Contact your local UMass Extension office for information on disability accommodations or the UMass Director if you have concerns related to discrimination, 413-545-4800 or refer to [www.extension.umass.edu/civilrights](http://www.extension.umass.edu/civilrights).

UNIVERSITY OF MASSACHUSETTS AMHERST



Biking

Sewing



Painting



Farming



Building

Baking



Photography

