

Hampden County 4-H/Youth Fair July 22, 2023



Years of Fairs & Fun!

**Eastern States Exposition
in the
Mallery Complex**

University of Massachusetts Extension

United States Department of Agriculture and Massachusetts Department of Agriculture cooperating



**4-H: Come. See.
EXPRESS**



Welcome to the 70th Hampden County 4-H / Youth Fair

Dear Fellow 4-H'ers!

70 years of fairs and fun in Hampden County 4-H - What a milestone!

Over the decades, we have made new discoveries in agriculture, technology and education. Our youth have grown into leaders who advocate for better quality of life. And it all started with an idea!

This year we celebrate...

Our rich history, and our dedicated volunteers spanning (multiple) generations who are living examples of the power of a mission. We are a fair "grounded in tradition with a side of change."

We realize that today's youth are developing skills to meet tomorrow's ever-changing demands and preparing for careers we have yet to define. We encourage them to spark ideas, test methods, streamline a process - innovate and create - to learn by doing in a positive space guided by supportive, passionate educators and volunteers.

The Hampden County 4-H / Youth Fair provides the opportunity for ALL YOUTH in our county to experience the "learn by doing" model our 4-H Program exemplifies.

We hope you will join us as we celebrate...our past, our present and our bright green future!

Sincerely,

The Hampden County 4-H / Youth Fair Association



UMass Extension is a unit of the Center for Agriculture, Food & the Environment in the College of Natural Sciences. UMass Extension is an equal opportunity provider & employer, United States Department of Agriculture cooperating. Contact your local UMass Extension office for information on disability accommodations or the UMass Director if you have concerns related to discrimination, 413-545-4800 or refer to www.extension.umass.edu/civilrights.

UNIVERSITY OF MASSACHUSETTS AMHERST

HAMPDEN COUNTY 4-H / YOUTH FAIR

2023 Fairbook Table of Contents

Welcome Letter	1
What's New for 2023	3
Hampden County 4-H / Youth Fair 2023 Officers and Directors	4
Organization and Purpose of the Hampden County 4-H / Youth Fair	4
Schedule of Events	5
Special Awards	6
Fair General Rules.....	8
2023 Animal Health Rules for Fairs and Shows.....	9
Livestock General Rules.....	14
Division 1 - Dairy.....	15
Division 2 - Beef.....	16
Division 2A - Working Steer.....	18
Division 3 - Sheep.....	19
Division 4 - Swine.....	21
Division 5 - Goat.....	22
Division 5A - Camelids.....	25
Division 6 - Poultry	26
Division 7 - Rabbit and Cavy.....	27
Division 8 - Model Horse Show.....	30
Division 8A - Dog Show.....	31
Hall Exhibit General Rules.....	36
Division 9 - Club and Group Exhibit.....	37
Division 9A - Individual Exhibit.....	39
Division 10 - Vegetable, Fruit, and Environmental Collections.....	41
Division 11 - Flower.....	42
Division 12 - Canning.....	44
Division 13 - Food.....	46
Division 14 - Clothing.....	49
Division 15 - Knitting.....	51
Division 16 - Crocheting.....	52
Division 16A - Quilt.....	53
Division 17 - Needle Craft.....	54
Division 17A - Machine Embroidery.....	54
Division 18 - Handmade Craft.....	55
Division 19 - Handmade Craft Display.....	56
Division 19A - Hobby Display	56
Division 20 - 4-H Poster Contest.....	57
Division 21 - Art Show.....	58
Division 22 - Handicraft.....	59
Division 23 - Agricultural Mechanics.....	59
Division 24 - Graphic Art.....	60
Division 25 - Photography.....	61
Division 26 - Science, Technology, Engineering, and Math (STEM).....	63
More Fair Activities.....	65
List of 2022 Donors.....	66
Entry Forms, Award Applications, 4-H Volunteer Forms.....	67

What's New For 2023!

- ✿ Visit our new website and download our *2023 Hampden County 4-H Fair Book* at www.hampdencounty4hfair.org
- ✿ Fair entries should be submitted on line at <http://hc4hfair.fairentry.com> unless you do not have access to the internet.
- ✿ Like us on Facebook: <https://www.facebook.com/hampdencounty4h>
- ✿ Access 4-H information at: www.mass4h.org
- ✿ Check on-line at *Commonwealth of Massachusetts Department of Agricultural Resources / Fairs* for updates to the *2023 Animal Health Rules for Fairs and Shows* that occurred after the printing of this fair book. Read the *Memorandum* added to *2023 Animal Health Rules for Fairs and Shows*.
- ✿ **Division 2 - Beef**
New classes offered: Market Steer under 900 pounds.
Costume class
- ✿ **Division 8 - Model Horse Show**
A live horse show **will not** take place again this year. It is being replaced by a **model** horse show.
- ✿ **Division 8A - Dog Show**
Check out the revised classes.
- ✿ **Division 9 - Club and Group Exhibits**
Premiums have been increased for *Working Exhibit* and *Club Exhibit* classes.
- ✿ **Division 9A - Individual Exhibit**
Public Presentations (Visual, Public Speaking and Performing Arts / Talent Show Presentations) will not be offered this year due to other activities planned.
- ✿ **Division 10 - Vegetable, Fruit and Conservation**
Division name has been changed to **Vegetable, Fruit and Environmental Collections**.
- ✿ **Division 11 - Flower**
No *Cannabis* products allowed.
- ✿ **Division 13 - Food**
"Wacky Chocolate Cake" for Juniors
"Holiday Spice Cake" for Seniors
- ✿ **Division 16A - Quilting**
Classes for *Kit Quilting (Block)* and *Commercial Quilting (Longarm)* added.
- ✿ **Division 21 - Art Show**
Added a *Fluid Art Class*
- ✿ **Division 24 - Graphic Art**
Classes have been revised.
- ✿ **Division 25 - Photography**
Classes have been revised.
- ✿ **Division 26 - Science, Engineering and Technology**
Division name has been changed to **Science, Technology, Engineering and Math (STEM)**
Classes have been revised.
- ✿ Increased Danish Points in **Division 15-Knitting, Division 16A-Quilt, Division 17-Needle Craft, Division 19A-Hobby Display, Division 20-4H Poster Contest, Division 21-Art Show, Division 22-Handicraft, Division 23-Agricultural Mechanics, Division 26-Science, Technology, Engineering and Math (STEM)**.
- ✿ **Other Activities**
The *Veggie Race* will not take place this year due to other activities planned.
- ✿ The Hampden County 4-H / Youth Fair Association is excited to partner with *Pedal Thru Youth* again this year! Check the Hampden County 4-H / Youth Fair social media sites for current information about the bike rodeo, parade and other bike events that are planned.
- ✿ **Check the Hampden County 4-H / Youth Fair social media sites and the activities schedule posted the day of the Fair for the 70 Years of Fairs and Fun Celebration Activities.**

HAMPDEN COUNTY 4-H/YOUTH FAIR ASSOCIATION

2023 Officers and Directors



President
Carey Leckie



Vice President
McKinley Tetreault

Recording Secretaries
Jeanne Tippet
Paul Tippet



Corresponding Secretary
Caitlynn Tippet

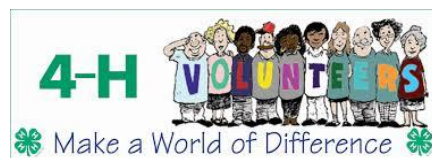


Treasurer
Sue Bonini

Assistant Treasurer
Randy Brown

Publicity Coordinator
Anne-Alise Pietruska

Awards Coordinator
Elena Lynch



Board of Directors
Randy Brown
Alice Boyd
Michael Pietruska
Paul Tippet
Sue Wright



4-H is a **community** of **young people** across America who are learning **leadership, citizenship** and **life skills.**



ORGANIZATION AND PURPOSE OF THE HAMPDEN COUNTY 4-H / YOUTH FAIR

The Hampden County 4-H/Youth Fair Association is sponsoring the Hampden County 4-H / Youth Fair on July 22, 2023. The primary objective of the Association is to promote and encourage the enrichment of all youth in Hampden County. The purpose of this fair is to offer youth an opportunity to publicly display their talents; develop leadership skills; stimulate positive competition in older youth; enhance self-worth; and encourage the development of better agricultural and creative products.

Membership in the Association is open to all interested adults, volunteer leaders, senior 4-H youth (ages 14 to 18), and such persons that are interested in the objective of the Association. The Massachusetts Department of Agriculture cooperates with this fair.



HAMPDEN COUNTY 4-H / YOUTH FAIR



Schedule Of Events

Wednesday, July 19, 2023

6 p.m. - Finish	Set-up exhibit tables and animal pens in the Mallary Complex. Everyone is encouraged to help.
-----------------	---

Friday, July 21, 2023

3:00 p.m.- 6:30 p.m.	Exhibitors bring Hall exhibits to Mallary Complex; tag exhibits and put them in place.
7:00 p.m.- Finish	Hall exhibit judging begins.

Saturday, July 22, 2023

DAY OF THE FAIR

7:00 - 9:00 a.m.	Dairy, Beef, Working Steer, Sheep, Rabbit, and Dog departments open to receive animals in the Mallary Complex.
8:00 - 9:00 a.m.	Poultry and Goat departments open to receive animals in the Mallary Complex.

FAIR HOURS: 8:30 a.m. - 5:00 p.m. FREE ADMISSION

Check the Hampden County 4-H / Youth Fair social media sites and the activities schedule posted the day of the Fair for additional *70 Years of Fairs and Fun Celebration Activities.*

9:00 a.m.	Fun Run (open to all youth) on the outside track
9:30 a.m.	Dairy, Goat, Rabbit, and Dog Shows Food Booth Opens
10:00 a.m.	Working Steer, Sheep and Poultry Shows Raffle Tickets on Sale Bottle Rocket Launch
11:00 a.m.	Beef Show Model Horse Show Pedal Tractor Pull
1:00 p.m.	<i>Pedal Thru Youth Events Begin</i>
3:00 p.m.	Fashion Revue
3:30 p.m.	Lead Line and Wool Competition
4:00 p.m.	Awards Presentation
5:00 p.m.	Fair exhibits removal, disassemble tables and pens, storage, clean-up

HAMPDEN COUNTY 4-H / YOUTH FAIR

Special Awards

Awards are presented to the best exhibit(or) in each division, in addition to a number of special awards described below.

Merritt Wright Award

This award is given to two senior exhibitors at the fair who are actively involved in the county or club program, who assist in the setup and cleanup of the 4-H Fair, and assist during the fair. This award is given in memory of a longtime supporter of the fair and one of its past presidents, Merritt Wright.

Michael Demko Award

A special award will be presented to a junior exhibitor, who is an active 4-H member, assists in the setup and cleanup of the 4-H Fair, and assists during the fair. This award is given in memory of Michael Demko, a long time 4-H volunteer and past 4-H Fair Association Director, who was especially active in the 4-H Service Club and in raising funds for the fair through the milk booth at the Eastern States Exposition.

Zoafia Demko Award

A special award will be presented by the 4-H Fair Association to a Hampden County 4-H member, 13 years of age or older as of January 1, 2023, who is active in 4-H and community service activities. This award is being given in memory of Zoafia Demko, who dedicated herself to community service in the 4-H program and in the community. **The application is located at the back of the fair book.**

Bertha Tower Award

A special award, to help defray educational expenses, will be presented to up to three outstanding Hampden County 4-H home economics members. These awards are given in memory of Bertha Tower, an active and enthusiastic supporter of the 4-H program. The selection committee will review and evaluate all applications. **The application is located at the back of the fair book.**

Sweepstakes Award

This special award recognizes the Hampden County 4-H exhibitor who has the most quality exhibits. The 4-H Fair Association will present this award to the exhibitor who accumulates the most blue Danish ribbons in the Hall Exhibit entries. In the event of a tie, the number of red Danish ribbons will be considered. This award may be received only 3 times per exhibitor.

Simonne Bienvenue Award

This award is given in memory of Simonne Bienvenue, a long time 4-H volunteer. It will be awarded to a deserving junior or senior exhibitor at the fair who has exhibited a high quality project in the areas of baking, canning, handmade crafts, crocheting or knitting. This award will be decided upon by the members of her family.

HAMPDEN COUNTY 4-H / YOUTH FAIR

Special Awards (cont.)

Mary Phelon Memorial Trophy

Two trophies will be presented in memory of Mary Phelon who dedicated her life to the youth of Hampden County. The award will be given to the winner of the Hampden County Pleasure Walk Trot and the winner of the Hampden County Pleasure Walk Trot Canter classes. The classes are open to all Hampden County exhibitors.

Frances Morin Memorial Award

The best overall 4-H rabbit showman will receive an individual award. This award is given in memory of Frances Morin whose family was very active in the Hampden County 4-H Program.

Hampden County 2023 4-H / Youth Fair Book Cover Contest

This year's winners are:

Front cover - Keira Leigh Jacquier

Back cover - Joshua Korzeniowski

Fair flyer - Jessica Korzeniowski

All other entries are illustrated throughout the fair book.

A special thanks to all for submitting an entry!
All participants will be awarded a gift card.



HAMPDEN COUNTY 4-H / YOUTH FAIR

Fair General Rules

- ELIGIBILITY:** This fair is open to **all youth** in Hampden County between the ages of 5 and 18 years as of January 1, 2023, in addition to registered 4-H members in Berkshire, Franklin, Hampshire, and Worcester Counties. Premiums are paid only to youth in Hampden County and registered 4-H members in Berkshire, Franklin, Hampshire, and Worcester Counties. Payment of premiums is contingent upon reciprocal agreement with participating counties. All exhibits must be the result of the exhibitor's own effort from August 2022 through July 2023.

4-H is committed to serving the best interests of youth. Research in youth development indicates that young children under age 8 should not be in competitive situations. This 4-H / Youth Fair will follow the guidelines developed for Massachusetts in regards to Cloverbuds (youth age 5 to 7 years) in competition.
- YOUTH WITH DISABILITIES:** Youth between the ages of 8 and 18 years as of January 1, 2023 requiring special accommodations should contact Angelica Paredes, 4-H Extension Educator, at angelica@umext.umass.edu 413-577-0759 by July 5, 2023 to outline the accommodations required.
- ALL ENTRIES** must be made on the official Hampden County 4-H/Youth Fair entry forms located at the back of this book. Additional entry forms and award applications may be downloaded from www.hampdencounty4hfair.org. **Entries must be postmarked or received electronically by July 12, 2023. A limited number of add-ons or changes may be accepted.** Entries must be received by the deadline so that there is adequate time to enter information into the fair computer program and generate entry tags. **Individuals who submit a late entry form will forfeit premiums. Absolutely no hall entries or new animal entries will be accepted the day of the Fair. Exception: Model Horse Show exhibits are set up the morning of the Fair by 10:30 a.m.**
- SYSTEM OF JUDGING:** The true Danish system of judging will be used on all premiums paid by the Hampden County 4-H/Youth Fair Association and the point system of awards will be used. Placing will be awarded on the basis of the exhibit's quality. Premiums will be paid according to numerical placing within the class using the number of points listed. Superintendents and judges reserve the right to reject any exhibits that are not on the premium list or are of undesirable quality. The judge's decision is final.
- SPECIAL RULES:** Specific age and competition regulations for Livestock and Hall Exhibits are found in the Livestock General Rules, Hall Exhibit General Rules, and the individual division rules.
- WORK ON EXHIBITS:** Only 4-H members or youth will be permitted to work on animals or exhibits after arrival on the fairgrounds.
- LOSS OR DAMAGE:** The Hampden County 4-H Youth/Fair Association will take every precaution to safeguard all exhibits. However, the Fair Association will not be responsible for loss, theft, or damage to any article, or loss or sickness of any livestock.
- VEHICLES:** **For safety reasons, no exhibitor or visitor vehicles are allowed in the Mallary Complex.**
- RELEASE OF EXHIBITS:** All Animal and Hall Exhibits must remain in place until 5:00 p.m. on July 22nd or until the end of the Awards Presentations, whichever comes later. Early removal will result in the forfeit of premiums.
- Trophy and award recipients must write a thank you note to the donor.**



Department of Agricultural Resources

251 Causeway Street, Suite 500, Boston, MA 02114 617-626-1700 fax: 617-626-1850 www.mass.gov/agr



MAURA T. HEALEY
Governor

KIMBERLY DRISCOLL
Lt. Governor

REBECCA L. TEPPER
Secretary

ASHLEY E. RANDLE
Commissioner

2023 Animal Health Rules for Fairs and Shows

Special Note: Due to the continuing U.S. outbreak of High Path Avian Influenza (HPAI), Animal Health Officials from all six New England States may recommend postponing competitions, exhibitions, shows, swaps, or other in-person events encouraging the gathering or comingling of domestic fowl or poultry. If events are held, best practices for biosecurity should be implemented.

In addition to complying with all laws and regulations governing animal health issues all fairs must adopt and enforce the following rules for governance of the fair.

NO animal will be admitted to the fairgrounds unless it meets the requirements below. NO animal is to be unloaded or enter a barn or tie-out stall until the animal and its paperwork have been inspected and approved for entry.

A. General Rules for All Animals: See M.G.L. c. 128 §2C, 129 §2

1. All animals must be in proper physical condition, be properly identified and free of visual evidence of infectious, contagious or parasitic disease at time of arrival. Specific diseases and conditions which will disqualify an animal for entry are identified for each species in the following sections of the rules. Animals of any species with open or draining wounds will not be approved for entry.
2. Evidence of infectious, contagious or parasitic disease or failure to produce the necessary documents for health certification, vaccination or testing will result in the animal's rejection for entry. **THE INSPECTOR'S DECISION IS FINAL.**
3. Any surgical procedure or injection of any foreign substance or drug or the external application of any substance (irritant, counterirritant, or similar substance) which could affect the animal's performance or alter its natural contour, conformation or appearance, except external applications of substances to the hoofs or horns of animals which affect appearance only, and except for surgical procedures performed by a duly-licensed veterinarian for the sole purpose of protecting the health of the animal, is prohibited.
4. **Official ID: See Final Rule: Summary of Traceability for Livestock Moved Interstate (Summary of general Requirements by Species)**
All livestock must have proper official, individual ID as required for the species and approved for the species, e.g., official metal ear tag, tattoo, scrapie tag, or microchip. Registration forms must accompany health certificates when used as part of official identification.
5. **Health Certificates:**
One Official Certificate of Veterinary Inspection (OCVI) may be allowed for animals of the same species to be exhibited at fairs or shows in any of the New England states (CT, *ME, MA, **NH, RI, and *VT) when submitted with an itinerary of the dates and locations of the events at which the listed animals are expected to be shown. Only animals that are healthy at the time of shipment may be moved.** Note that *ME, **NH, and ***VT have additional requirements. Certificates of veterinary inspection in these states are valid for a shorter period of time and may have additional language, movement and permit requirements. For the 2023 Show and Fair Season, livestock animals being exhibited in New England states must have official certificates of veterinary inspection (OCVIs) that meet the following requirements:

- a. **MA, and RI:** OCVIs issued on or after **January 1, 2023** may be used for those animals being shown at multiple fairs and shows in CT, **MA**, and RI through the 2023 show/fair season ending October 31, 2023.
 - i. **CT and ME:** *An importation permit for exhibition animals is also required. Contact CT Dept. of Agriculture (860-713-2504) or ME State Veterinarian's Office (207-287-3701) for permits or questions.*
 - ii. **MA -Note: The Big E Fairgrounds** in West Springfield requires a CVI issued within the prior 30 days for all **horses** entering the premises for any show, fair, or exhibition.
 - iii. **NH:** * * NH: To qualify for the extended CVI, animals exhibited in NH must originate in a New England state and move on OCVIs issued on or after April 1, 2023 to participating NH fairs and shows from **July 1 to October 31. The extended CVI is not available for animals that do not reside in New England.** *Contact NH State Veterinarian's Office (603) 271-2404 for details and permits.*
 - iv. *****VT:** *Contact the VT Animal Health Office (802-828-2421) for specific import requirements that deviate from the general information in this letter and must be met for legal import of livestock.*
- b. A single OCVI from the animals' home state may be completed for travel to and from the New England states in which the animals will be exhibited. *MA animals being shown ONLY in MA may substitute a signed, dated letter on the letterhead of an accredited veterinarian for an OCVI if all required information is included and all additional requirements are met.*
- c. Multiple animals of the same species may be listed on one health certificate with appropriate individual IDs and descriptions. Animals of different species may not be listed on the same official health certificate.
- d. **An itinerary of the names and locations for each New England fair or show at which owner expects to show the listed animals and the dates when each animal is expected to be on each site, must be prepared by the owner and presented to the veterinarian at the time the OCVI is written.**
 - i. **A copy of this planned itinerary must be attached to the official health certificate (import and export) for it to be used for more than one fair or show.**
 - ii. That proposed list should be signed by the veterinarian and the owner/ exhibitor and reference the relevant OCVI number(s).
- e. The name and address of the first show or fair where the listed animals will be exhibited is to be used as the "destination" on the OCVI form. In addition, "See attached list" or a similar statement directing Animal Health Officials or Fair Inspectors to the attached proposed itinerary must be included.
- f. Exhibitors must keep an accurate list of the show locations and dates when their animals were actually on the show/fairgrounds. This record must be available to fair inspectors at each inspection and check-in.
- g. Any animal listed on an OCVI that becomes sick must remain home. If the animal is refused entry to any exhibition during 2023 for health reasons it must have a new health certificate issued by an accredited veterinarian within 30 days of the next interstate movement.
- h. Any New England state may end their participation in this agreement and revert to the standard published requirements for livestock imports in the state at any time, in the event of foreign animal disease outbreak or changes to state legislation.

All petting zoos are required to have a USDA APHIS Exhibitor's License (as needed) and valid 2023 health certificates.

ADDITIONAL REQUIREMENTS FOR EACH SPECIES ARE LISTED BELOW

B. Cattle: See M.G.L. c. 129 §§2, 39 and 330 CMR 4.04(2).

1. **TB and Brucellosis testing is not required for animals from TB-Accredited and Brucellosis-Free States** and in-state animals. Current brucellosis and TB status in the exhibitor's state can be obtained from the state veterinarian's office in each state. If the exhibitor's state is not TB-Accredited or Brucellosis-Free, then the exhibitor must call the Massachusetts Division of Animal Health for entry requirements (617-626-1795). All animals must be free of visual evidence of the following diseases and conditions: foot rot, mange, pinkeye, ringworm, warts, cowpox and open or draining wounds.
2. While not required, it is strongly recommended that all cattle be currently vaccinated for rabies.
3. **Note: The Big E is requiring RFID official identification tags for all cattle entering the Big E Fairgrounds premises in 2023. Other fairs may add this requirement. Contact fair office with questions.**

C. Poultry: See M.G.L. c. §§2, 129, and 330 CMR 5.02.

1. No poultry will be admitted to a fairground until it has been individually inspected.
2. All poultry must be free of visual evidence of the following diseases: infectious bronchitis, coryza, pullorum-typhoid, fowl-pox, external parasites and laryngotracheitis.
3. Each bird must be accompanied by written proof (ID card or test report) that the breeding flock was blood-tested negative for pullorum-typhoid within one year prior to entry date.
4. Birds from quarantined states will not be permitted entry.
5. All birds over 16 weeks of age as of January 1, 2023 shall be individually leg banded with a state leg band. This includes out of state exhibitors.
6. No bird vaccinated for laryngotracheitis within thirty days of the fair will be admitted.

D. Goats: See M.G.L. c. 129 §2, 9 CFR 79.6 and Massachusetts Emergency Order 1-AHO-06.

1. **TB and Brucellosis testing is not required for animals from TB-Accredited and Brucellosis-Free States** and in-state animals.
2. All goats and kids presented, regardless of age, must be individually listed and identified on the health certificate. All goats must be free of visual evidence of the following diseases and conditions: foot rot, mange, pinkeye, ringworm, warts, pox and open or draining wounds. All goats must also be free of sore mouth and scrapie exposure.
3. Based on the Federal Scrapie Eradication Program (FSEP), goats and sheep of any age or sex brought to show or exhibition from either out of state or within state must possess a USDA official individual identification tag or registry tattoo accompanied by current registration papers consistent with the requirements of the FSEP and the Massachusetts Emergency Order 1-AHO-06. Information is available from USDA-APHIS at 508-363-2290.

E. Camelids (Llamas, Alpacas, etc.): See M.G.L. c. 129 §2, M.G. I. c. 131, §23, 321 CMR 9.02.

1. **TB and Brucellosis testing is not required for animals from TB-Accredited and Brucellosis-Free States** and in-state animals. Current brucellosis and TB status in the exhibitor's state can be obtained from the state veterinarian's office in each state. If the exhibitor's state is not TB-Accredited or Brucellosis-Free, then the exhibitor must call the Massachusetts Division of Animal Health for entry requirements (617-626-1795).
2. All Camelids originating from outside the Commonwealth are required to be tested for Blue Tongue. Exception: Animals from a USDA declared "Low Incident State" are exempt. New England and New York are low incident states.
3. All animals must be free of visual evidence of the following diseases and conditions: foot rot, mange, pinkeye, ringworm, warts, pox and open or draining wounds.

F. Swine: See M.G.L. c. 129 §14E, 330 CMR 11.04(2), 9 CFR 71.19.

1. All swine must be identified by an official ear tag or registration.
2. Swine must be free of visual evidence of the following diseases and conditions: erysipelas, atrophic rhinitis, mange and open or draining wounds.
3. No person shall import into Massachusetts from outside the state any swine which have been pseudorabies vaccinated M.G.L. c. 129 §14E.
4. No person shall import into Massachusetts swine from Stage I or Stage II Pseudorabies States.
5. All swine shall originate from qualified pseudorabies-free herds or monitored herds in qualified pseudorabies free States only. The pseudorabies status of the exhibitor's state can be obtained from the state veterinarian's office in each state.

G. Sheep: See 9 CFR 79 and Massachusetts Emergency Order 1-AHO-06.

1. No sheep will be allowed entry from flocks in which Scrapie has been diagnosed or in which animals are under surveillance for Scrapie during the previous eighteen months. Based on the Federal Scrapie Eradication Program (FSEP), goats and sheep of any age or sex brought to show or exhibition from either out of state or within state must possess a USDA official individual identification tag or registry tattoo accompanied by current registration papers consistent with the requirements of the FSEP and the Massachusetts Emergency Order 1-AHO-06. Information is available from USDA-APHIS at 508-363-2290.
2. No sheep will be permitted entry from flocks in which soremouth has existed or in which soremouth vaccine has been administered in the previous sixty (60) days.
3. Sheep must be free from visual evidence of foot rot, sore mouth, pink eye, ringworm, and open and draining wounds. While not required, it is strongly recommended that sheep be currently vaccinated against rabies.

H. Equine: M.G.L. c. 128 §§2C, 44, 330 CMR 16.05.

1. All equines entering a Massachusetts fairground must have a valid health certificate.
Note: *The Big E Fairgrounds in West Springfield requires a CVI issued within the prior 30 days for all equines entering the premises for any show, fair, or exhibition.*
2. All equines must be free of visual evidence of the following diseases and conditions: mange, ringworm, soring, strangles, and open or draining wounds.
3. All equines originating from within and outside of the Commonwealth must have a negative USDA-approved EIA test (i.e., Coggins test or ELISA test) dated within twelve months of entry.
4. While not required, it is *strongly recommended* that all equines be vaccinated for rabies, tetanus, EEE and WNV within one year of the fair.

I. Rabbits: See M.G.L. c. 129 §2

Rabbits must be free of visual evidence of the following diseases: rabbit hemorrhagic Disease Virus 2 (RHDV2), snuffles, wet tail, and skin and ear infections. Microchips may be used for ID in rabbits originating in MA.

J. Dogs and Cats: See M.G.L. c. 129 §39G

1. All dogs and cats must be free of visual evidence of the following diseases: kennel cough, distemper, hepatitis, parvo, ringworm and mange.
2. **All dogs and cats must be accompanied by a valid and current vaccination certificate for rabies.**

Contact the Massachusetts Division of Animal Health at 617-626-1797 or 617-626-1795 for further information.

MEMORANDUM

TO: Accredited Veterinarians
Exhibitors and Show Inspectors

FROM: New England State Veterinarians
CT Dr. Jane Lewis NH Dr. Stephen K. Crawford
MA Dr. Lorraine O'Connor RI Dr. Scott Marshall
ME Dr. Stephanie Bolas VT Dr. Kristin M. Haas

SUBJECT: **Livestock Health Certificates for the 2023 Show Season**

DATE: April 13, 2023

Special Notices: Due to the continuing U.S. outbreak of High Path Avian Influenza (HPAI), Animal Health Officials from all six New England States may recommend postponing competitions, exhibitions, shows, swaps, or other in-person events encouraging the gathering or comingling of domestic fowl or poultry. If events are held, best practices for biosecurity should be implemented.

Contact the state where animals will be exhibited for the latest update information.

Currently an Official Certificate of Veterinary Inspection (OCVI) is required for each state for every animal movement across state lines. Animals crossing state lines must be properly (officially) identified per federal and state Animal Disease Traceability (ADT) requirements. Each state to which an animal travels needs to be contacted to verify that all traceability and movement permit requirements are met before shipping.

Recognizing that during the agriculture and fair and show season, exhibition animals may be moving to multiple states and locations within a state, the New England State Veterinarians, working through the New England States Animal Agricultural Security Alliance (NESAASA), have developed a new protocol to facilitate animal movement. The New England State Veterinarians have agreed to allow a show/fair certificate to be valid for the show season provided that they are in compliance with all federal and state ADT rules.

For the 2023 Show and Fair Season, livestock animals being exhibited in New England states must have official certificates of veterinary inspection (OCVIs) that meet the following requirements:

2023 NE Exhibition Health Certificate Rule Requirements, Continued:

- **CT, MA, ME and RI:** OCVIs issued on or after **January 1, 2023** may be used for animals being shown at fairs and shows in CT, MA, ME and RI through the 2023 show/fair season ending October 31, 2023.
 - **Special Note on The Big E in West Springfield, MA:** All **horses** shown at The Big E Fairgrounds premises must have a CVI dated within the prior 30 days in 2023.
- ***CT and ME:** *An importation permit for exhibition animals is also required. Contact CT Department of Agriculture (860-713-2504) or the ME State Veterinarian's Office (207-287-3701) for permits or questions.*
- ****NH:** *Animals exhibited in NH must originate in a New England state and move on OCVIs issued on or after April 1, 2023 to participating NH fairs and shows from July 1 to October 31, 2023. Contact the NH State Veterinarian's Office (603-271-2404) for details and permits.*
- *****VT:** *The fair season is defined as May 1 through October 31, 2023. Contact the VT Animal Health Office (802-828-2421) for specific import requirements and permits.*
- A single OCVI from the animals' home state may be completed for travel to and from the New England states in which the animals will be exhibited.
- Multiple animals of the same species may be listed on one health certificate with appropriate individual IDs and descriptions. Animals of different species may not be listed on the same official health certificate.
- **An itinerary of the names and locations for each New England fair or show at which the owner expects to show the listed animals and the dates when each animal is expected to be on each site, must be prepared by the owner and presented to the veterinarian at the time the OCVI is written.**
 - **A copy of this planned itinerary must be attached to the official health certificate (import and export) for it to be used for more than one fair or show.**
 - That proposed list should be signed by the veterinarian and the owner/exhibitor and reference the relevant OCVI number(s).
- The name and address of the first show or fair where the listed animals will be exhibited is to be used as the "destination" of the OCVI form. In addition, "*See attached list*" or a similar statement directing Animal Health Officials or Fair Inspectors to the attached proposed itinerary must be included.
- Exhibitors must keep an accurate list of the show locations and dates when their animals were actually on the show/fairgrounds. This record must be available to Fair Inspectors at each inspection and check-in.
- Any animal listed on an OCVI that becomes sick must remain home. If the animal is refused entry to any exhibition during 2023 for health reasons it must have a new health certificate issued by an accredited veterinarian within 30 days of the next interstate movement.
- Any New England state may end their participation in this agreement and revert to the standard published requirements for livestock imports in the state at any time, in the event of foreign animal disease outbreak or changes to state legislation.

Remember: One certificate for shows in CT, MA, ME, NH, RI and VT. Contact each state for specific requirements. Import permits are issued by each individual state and must be listed on the OCVI. **The list of events, with dates and locations, where the animals are expected to be shown must accompany the OCVI.** Use one certificate per species. All animals must be listed individually, with appropriate official ID numbers and physical descriptions.

Sick animals may not be shipped anywhere.

Please contact the destination state for import / exhibition permits or with any questions about movement requirements:

CT	860-713-2504	NH	603-271-2404
MA	857-348-3922	VT	802-828-2421
ME	207-287-3701	RI	401-222-2781, ext. 2774515



HAMPDEN COUNTY 4-H / YOUTH FAIR

Livestock General Rules

1. Read Fair General Rules and 2023 Animal Health Rules for Fairs and Shows.
2. **AGE REQUIREMENTS** - No child under 5 years old as of January 1, 2023 is allowed to exhibit.
 - ☘ **Cloverbud** - Youth 5 to 7 years old as of January 1, 2023 will enter non-judgmental clinics or classes with the same ribbon only.
 - ☘ **Junior** - Youth 8 to 13 years old as of January 1, 2023.
 - ☘ **Senior** - Youth 14 to 18 years old as of January 1, 2023.
3. **EXHIBITS** - All departments will be open to receive animals from 7:00 - 9:00 a.m. on July 22nd. **All animals must remain in place until 5:00 p.m. or after the awards ceremony, whichever is later on July 22nd.**
4. Dairy, sheep, goat, and beef exhibitors may enter more than one entry per class but are limited to two premiums per class.
5. Showmanship classes may be divided based on age and/or experience of the exhibitor at the discretion of the superintendent. A novice is a junior or senior exhibitor who has not shown before in competition. Cloverbud years are not applicable.
6. All animals must be shown by the owner or lessee, unless there is more than one animal in a class. If more than one entry, other animals must be **shown by youth in proper show attire**. Registration papers must indicate an individual, not a farm name, unless the exhibitor is leasing the animal. Those who have a *4-H Lease Form* must have the form in their possession.
7. **DRESS CODE:** Show clothes must be worn for all classes in Divisions 1 through 8A. High heels are not allowed. If skirts are allowed, the length must be to the middle of the knee. Refer to the individual divisions for additional appropriate dress attire. Superintendents and judges have the authority to disqualify an exhibitor if they deem the exhibitor's attire is inappropriate.
8. No adults are allowed to work on animals or prepare animals for show at any time.
9. **DISPLAY AREA** - Youth must be present and doing most of the work when setting up the display area on the day of the show or earlier. **Parents and adults are allowed to assist with bedding, BUT youth must be present and helping.** Any display signs must be set up by youth only.
10. **No exhibitor or animal will be allowed to stay overnight.**
11. **No animals allowed in the food aisle.**
12. **SALE OF RABBITS OR LIVESTOCK** - The Hampden County 4-H/Youth Fair Association will allow the sale of rabbits by 4-H members only if they are exhibiting at the fair and have registered with the Rabbit Superintendent. The Fair Association prohibits the sale of equipment, products, or any other animals at the Hampden County 4-H/Youth Fair.
13. All animal exhibitors are responsible for cleaning their own area and the show area by removing bedding, taking down pens, and loading the equipment onto trucks. **Exhibitors must bring their own brooms, shovels, or other equipment for cleanup.**
14. All animal exhibitors must check with the division superintendent before leaving the fairgrounds. Failure to do so will result in forfeiting the premium money.

DIVISION 1 - Dairy

Superintendents: Bridget Rida (bphelon@hotmail.com) and Ashley Owen

- ✿ Read Fair General Rules, 2023 Animal Health Rules for Fairs and Shows, and Livestock General Rules.
- ✿ Exhibitors **must have papers with them** proving animals are from accredited herds or passed a TB test.
- ✿ RFID tags are required on all animals.
- ✿ Animals must be owned or leased by May 1, 2023.
- ✿ No change in dairy entries accepted after 9:00 a.m. on July 22, 2023.
- ✿ All milking animals must be milked dry in the morning milking.
- ✿ A livestock card must be on display above each animal. The 4-H Fair Association will provide the cards.
- ✿ All exhibitors in the Dairy Division are required to wear the following while showing:
 - Girls:** Clean, white shirt or T-shirt; white pants; no skirt or shorts allowed.
 - Boys:** Clean, white shirt or T-shirt; white pants; no shorts allowed.
- ✿ All exhibitors must wear boots or hard toed closed shoes.
- ✿ Exhibitor must be able to show and control animal in the ring or they may be asked by the judge to leave the ring and premium money will be forfeited.

Premium Points: 50 - 45 - 40 - 35 - 30 - 25 - 20

- 101 Spring Heifer Calf - Mar. 1, 2023 - May 31, 2023
- 102 Winter Heifer Calf - Dec. 1, 2022 - Feb. 28, 2023
- 103 Fall Heifer Calf - Sept. 1, 2022 - Nov. 30, 2022
- 104 Summer Yearling Heifer - June 1, 2022 - Aug. 31, 2022
- 105 Spring Yearling Heifer - Mar. 1, 2022 - May 31, 2022
- 106 Winter Yearling Heifer - Dec. 1, 2021 - Feb. 28, 2022
- 107 Fall Yearling Heifer - Sept. 1, 2021 - Nov. 30, 2021
- 108 Dry Cow - any age
- 109 Cow (2 yrs. and under 3) - Sept. 1, 2020 - Aug. 31, 2021
- 110 Cow (3 yrs. and under 4) - Sept. 1, 2019 - Aug. 31, 2020
- 111 Cow (4 yrs. and under 5) - Sept. 1, 2018 - Aug. 31, 2019
- 112 Aged Cow (over 5 yrs.) - born before Sept. 1, 2018
- 114 Get of Sire - 3 animals with same sire
- 115 Produce of Dam - 2 animals of same dam
- 116 Dam and Daughter
- 117 Best Bred and Owned – must be bred and owned by exhibitor; any age;
each breed shown separately
- 118 Best 3 Females - bred and owned by one exhibitor; any age
- 119 Exhibitor's Herd - 3 animals of same breed; any age
- 120 Club Herd (5 animals, owned by at least 2 different exhibitors) - maximum of 2 herds per club; no exhibitor may show animals in more than one herd, i.e. must have 4 exhibitors - 2 showing in one herd and 2 different exhibitors showing animals in the second herd. Cloverbuds may be included. **Herds must be registered with the Fair Secretary before the show begins and entered with the leader's name and address.**
- 122 Costume Class - just for fun (ribbon only)

Add letter to Classes 101 - 119

- A Ayrshire**
- B Brown Swiss**
- C Guernsey**
- D Holstein**
- E Jersey**
- F Milking Shorthorn**
- G Grade**



Showmanship Classes: All exhibitors must enter Fitting and Showmanship.

- 125 Professional Fitting and Showmanship - exhibitor who has won a Senior Fitting and Showmanship Class. Class will be held only if 3 or more entries, otherwise it will be combined with Senior Fitting and Showmanship.
- 126 Senior Fitting and Showmanship - exhibitor 16 to 18 years old as of Jan. 1, 2023
- 127 Intermediate Fitting and Showmanship - exhibitor 12 to 15 years old as of Jan. 1, 2023
- 128 Junior Fitting and Showmanship - exhibitor 8 to 11 years old as of Jan. 1, 2023
- 129 Novice Fitting and Showmanship - Junior or Senior exhibitor who has not shown before

DIVISION 1 - Dairy (cont.)

Cloverbud Clinics: Exhibitor 5 to 7 years old as of Jan. 1, 2023

130 Cloverbud Exhibitor Clinic - 1 animal of any age or breed; all shown in the same class

131 Cloverbud Showmanship Clinic

Herdmanship Award

Award selection is based upon how well the exhibitor keeps his/her area neat and clean, cares for animals, and cooperates with the superintendent, judge, and other exhibitors.

DIVISION 2 - Beef

Superintendents: Anna Demko / Elena Lynch

- ✿ Read Fair General Rules, 2023 Animal Health Rules for Fairs and Shows, and Livestock General Rules.
- ✿ Animals must be owned or leased by May 1, 2023.
- ✿ List breed and age of animal on entry form.
- ✿ RFID tags are required on all animals.
- ✿ A livestock card must be on display above each animal. The 4-H Fair Association will provide the cards.
- ✿ Classes may be subdivided at the discretion of the Superintendent.
- ✿ All female beef, of the same age, will compete together unless more than 3 entries in one breed.
- ✿ All exhibitors in the Beef Division are required to wear the following while showing:
 - Girls:** Clean, light colored or Western shirt; dark jeans; no skirt or shorts allowed.
 - Boys:** Clean, light colored or Western shirt; dark jeans; no shorts allowed.
- ✿ All exhibitors must wear boots or hard toed closed shoes.
- ✿ Next class should be on deck when the previous class enters the ring.

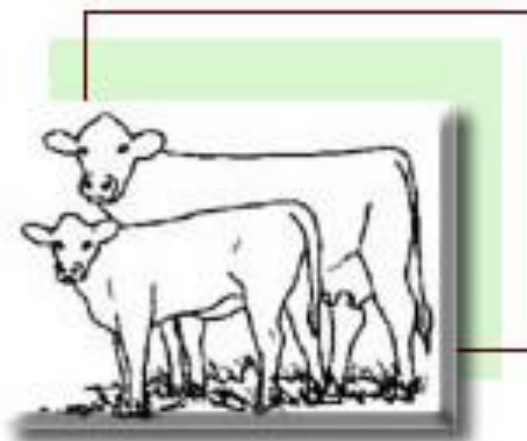
Premium Points: 50 - 45 - 40 - 35 - 30 - 25 - 20

Add letter to Classes 201 - 223

- A Angus**
- B Hereford**
- C Simmental**
- D Belted Galloway**
- E Other**
- F Crossbreed**

Female

- 201 Summer Calf - born Apr., May, or Jun. 2023
- 202 Junior Calf - born Jan., Feb., or Mar. 2023
- 203 Senior Calf - born Sept., Oct., Nov., or Dec. 2022



DIVISION 2 - Beef (cont.)

- 204 Summer Yearling - born May, Jun., Jul., or Aug. 2022
- 205 Junior Yearling - born Jan., Feb., Mar., or Apr. 2022
- 206 Senior Yearling - born Sept., Oct., Nov., or Dec. 2021
- 207 Cow - 2 years old
- 208 Cow - older than 2 years old
- 209 Champion Female - ribbon only class

Male

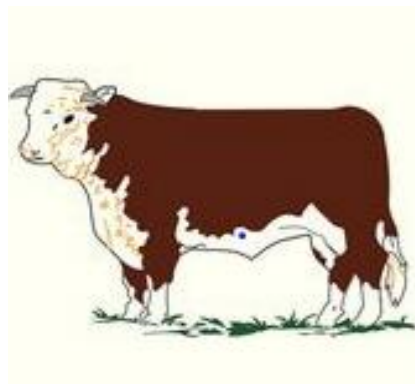
Bull Calf - born between January 2023 and June 2023

- 211 Junior Bull Calf - born Jan., Feb., or Mar. 2023
- 212 Spring Bull Calf - born Apr., May, or Jun. 2023

Market Steer

All steers will be weighed upon arrival by the superintendent.

- 213 Prospect Steer – under 900 pounds
- 214 Light Weight Steer - 900 to 1099 pounds
- 215 Medium Weight Steer - 1100 to 1299 pounds
- 216 Heavy Weight Steer - 1300 pounds and heavier
- 217 Champion Steer - ribbon only class



Groups

- 219 Cow and Calf Pair - cow with latest natural calf
- 220 Get of Sire - 3 animals with same sire
- 221 Produce of Dam - 2 animals; the produce of one dam
- 222 Exhibitor's Herd - 3 animals; same breed

Costume (ribbon only)

- 223 Costume Class - just for fun

Showmanship Classes: All exhibitors must enter Fitting and Showmanship.

- 225 Professional Fitting and Showmanship - exhibitor who has won a Senior Fitting and Showmanship Class. Class will be held only if 3 or more entries, otherwise it will be combined with Senior Fitting and Showmanship.
- 226 Senior Fitting and Showmanship - exhibitor 14 to 18 years old as of Jan. 1, 2023
- 227 Junior Fitting and Showmanship - exhibitor 8 to 13 years old as of Jan. 1, 2023
- 228 Novice Fitting and Showmanship - Junior or Senior exhibitor who has not shown before

Cloverbud Clinics: Exhibitor 5 to 7 years old as of Jan. 1, 2023

- 230 Cloverbud Exhibitor Clinic - 1 animal of any age or breed; all shown in the same class
- 231 Cloverbud Showmanship Clinic

Herdmanship Award

Award selection is based upon how well the exhibitor keeps his/her area neat and clean, cares for animals, and cooperates with the superintendent, judge, and other exhibitors.

DIVISION 2A - Working Steer

Superintendent: Tracy Allen and Derek Turnbull

✿ Read Fair General Rules, 2023 Animal Health Rules for Fairs and Shows, and Livestock General Rules.

✿ Animals must be owned or leased by June 1, 2023.

✿ List breed and age of animal on entry form.

✿ RFID tags are required on all animals.

✿ A livestock card must be on display above each animal. The 4-H Fair Association will provide the cards.

✿ All exhibitors in the Working Steer Division are required to wear the following while showing:

Girls: Clean, light colored shirt or T-shirt; tan, green, or white pants or skirt;
no shorts allowed.

Boys: Clean, light colored shirt or T-shirt; tan, green, or white pants; no shorts allowed.

All exhibitors must wear boots or hard toed closed shoes.

✿ All animals must be shown by the owner or lessee.

✿ **Classes will be divided based upon age and / or ability at the discretion of the superintendent or judge on the day of the show.**

Premium Points: 50 - 45 - 40 - 35 - 30 - 25 - 20

250 Stone Boat
251 Cart
252 Obstacle Course

Ribbon Only Classes

253 Trained Steers
254 Costume - just for fun

Showmanship Classes: All exhibitors must enter Fitting and Showmanship.

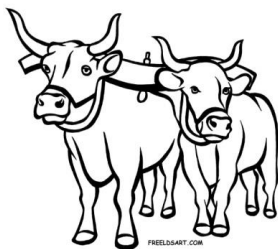
260 Novice Fitting and Showmanship - Junior or Senior exhibitor who has not shown before
261 Junior Fitting and Showmanship - exhibitor 8 to 13 years old as of Jan. 1, 2023
262 Senior Fitting and Showmanship - exhibitor 14 to 18 years old as of Jan. 1, 2023

Cloverbud Clinics: Exhibitor 5 to 7 years old as of Jan. 1, 2023

270 Cloverbud Exhibitor Clinic - a young pair of steers; any breed; with adult help or supervision;
all shown in the same class
271 Cloverbud Showmanship Clinic

Herdmanship Award

Award selection is based upon how well the exhibitor keeps his/her area neat and clean, cares for animals, and cooperates with the superintendent, judge, and other exhibitors.



DIVISION 3 - Sheep

Superintendent: Judy and Dylan Harris

- ✿ Read Fair General Rules, 2023 Animal Health Rules for Fairs and Shows, and Livestock General Rules.
- ✿ Animals must be owned or leased by June 1, 2023.
- ✿ Exhibitor must furnish papers showing proof of ownership or lease. Papers must indicate an individual, not a farm name.
- ✿ All purebreds must have ear tags. Papers will be checked with tags.
- ✿ A livestock card must be on display above each animal. The 4-H Fair Association will provide the cards.
- ✿ **Please indicate the number of pens required on your entry form. Standard pen size is 6 x 6 feet.**
- ✿ All animals shown in group classes must be shown in individual classes.
- ✿ Market lambs may be divided into two classes by weight the day of the show. Market lambs must be shorn after July 1, 2023.
- ✿ All exhibitors in the Sheep Division are required to wear the following while showing:
 - Girls:** Clean, white shirt or T-shirt; tan or white pants. No shorts allowed.
 - Boys:** Clean, white shirt or T-shirt; tan or white pants. No shorts allowed.
 All exhibitors must wear closed toe / closed heel shoes or sneakers at all times.

Shepherd's Award

A Shepherd's Contest is held on the day of the fair. Award selection is based upon how well the exhibitor keeps his/her area clean, cares for animals, and cooperates with fair superintendents and other exhibitors.

Novice/Junior/Intermediate Award

An "Gentle Hands" award will be presented to a novice, junior, or intermediate exhibitor at the end of the day. Senior exhibitors will determine the award recipient based upon observations during the day.

Dates for dividing Junior and Senior lambs are:

January 1	Border Leicester Cotswold Dorset Hampshire Grade Lincoln	Natural Colored Oxford Shropshire Suffolk Tunis Any other purebred - meat Any other purebred - wool
February 1	Southdown	
March 1	Cheviot	

Add letter to Classes 301 - 316

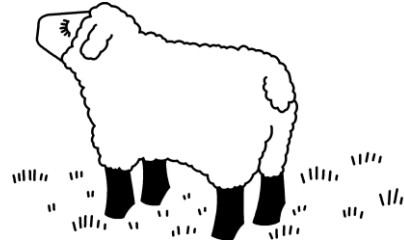
A	Border Leicester
B	Cheviot
C	Cotswold
D	Dorset
E	Hampshire
F	Lincoln
G	Natural Colored
H	Oxford
I	Shropshire
J	Southdown
K	Suffolk
L	Tunis
M	Grade
N	Any other purebred - meat
O	Any other purebred - wool

Premium Points: 25 - 20 - 15 - 10 - 5

301	Yearling Ram - purebred under 2 years old
302	Senior Ram Lamb - purebred; must not show yearling teeth
303	Junior Ram Lamb - purebred; must not show yearling teeth
304	Pair of Ram Lambs
305	Champion Ram - ribbon only
306	Aged Ewe - 2 years old or older; must show more than 4 permanent incisors
307	Yearling Ewe - over 1 year old; must have yearling or 2 year old mouth

DIVISION 3 - Sheep (cont.)

- 308 Pair of Yearling Ewes
- 309 Senior Ewe Lamb - must not show yearling teeth
- 310 Junior Ewe Lamb - must not show yearling teeth
- 311 Pair of Ewe Lambs
- 312 Champion Ewe - ribbon only
- 313 Get of Sire - 3 offspring of same ram; any age; any sex
- 314 Produce of Dam - 2 offspring of same dam; any age, any sex
- 315 4-H Exhibitor's Flock - 1 ram and 4 ewes
- 316 Breeder's Flock - 1 ram, 2 ewes; all bred and owned by exhibitor
- 317 Novice Market Lamb - under 1 year old; Junior or Senior exhibitor showing for the 1st year
- 318 Market Lamb - under 1 year old
- 319 Pair of Market Lambs - under 1 year old
- 320 Champion Market Lamb - ribbon only
- 321 Supreme Champion Ram - ribbon only
- 322 Supreme Champion Ewe - ribbon only
- 323 Supreme Champion of Show - ribbon only
- 324 Best Fleece
- 325 Obstacle Course - ribbon only



Showmanship Classes: All exhibitors must enter Fitting and Showmanship.

- 330 Novice Fitting and Showmanship - Junior or Senior exhibitor who has not shown before
- 331 Junior Fitting and Showmanship - exhibitor 8 to 10 years old as of Jan. 1, 2023
- 332 Intermediate Junior Fitting and Showmanship - exhibitor 11 to 13 years old as of Jan. 1, 2023
- 333 Senior Fitting and Showmanship - exhibitor 14 to 18 years old as of Jan. 1, 2023

Cloverbud Clinics: Exhibitor 5 to 7 years old as of Jan. 1, 2023

- 336 Cloverbud Exhibitor Clinic - 1 animal of any age or breed; all shown together in the same class
- 337 Cloverbud Showmanship Clinic

Lead Line and Wool Competition

Saturday, July 22nd at 3:30 p.m.



1. Competition Rules:

- ☘ Contestant must have an interest in promoting sheep and wool.
- ☘ Competition is open to both males and females.
- ☘ Contestant must lead a sheep, clean, and fitted for show on a halter. **The contestant does not have to own the sheep,** but may borrow one.
- ☘ The outfit modeled by the contestant **or** a major part of the outfit, must be made of 100% wool. Bonus points are given if the contestant constructed his/her own garment.

All Junior and Senior participants will be awarded 10 Premium Points. Awards will be presented to the best overall Junior contestant and the best overall Senior contestant.

- 340 Cloverbud sheep lead line and wool competition - exhibitor 5 to 7 years old as of Jan. 1, 2023
- 341 Junior sheep lead line and wool competition - exhibitor 8 to 13 years old as of Jan. 1, 2023
- 342 Senior sheep lead line and wool competition - exhibitor 14 to 18 years old as of Jan. 1, 2023

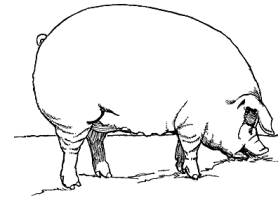
DIVISION 4 - Swine

Superintendent:

- ✿ Read Fair General Rules, 2023 Animal Health Rules for Fairs and Shows, and Livestock General Rules.
- ✿ Animals must be owned or leased by June 1, 2023.
- ✿ A veterinarian's health certificate must be presented before animals are unloaded.
- ✿ List age, breed, and sex of animal on entry form.
- ✿ **Please indicate the number of pens required on the entry form. Standard pen size is 6 x 6 feet.**
- ✿ A livestock card must be on display above each animal. The 4-H Fair Association will provide the cards.
- ✿ All exhibitors in the Swine Division are required to wear the following while showing:
 - Girls:** Clean, white shirt or T-shirt; tan or white pants. No shorts allowed.
 - Boys:** Clean, white shirt or T-shirt; tan or white pants. No shorts allowed.
- ✿ All exhibitors must wear closed toe / closed heel shoes or sneakers at all times.
- ✿ Classes will be divided based upon age and / or ability at the discretion of the superintendent or judge on the day of the fair.
- ✿ Each exhibitor must clean up pens at release time or forfeit premiums.

Premium Points for Classes 401 - 417: 25 - 20 - 15 - 10 - 5

- 401 Boar - 1 year or older
- 402 Boar - born Oct .1, 2022 - Dec. 31, 2022
- 403 Boar - born Jan 1, 2023 - Mar. 31, 2023
- 404 Boar - born after April 1, 2023
- 405 Sow - 1 year or older lactating
- 406 Sow - 1 year or older non-lactating)
- 407 Gilt - born Oct .1, 2022 - Dec. 31, 2022
- 408 Gilt - born Jan 1, 2023 - Mar. 31, 2023
- 409 Gilt - born April 1, 2023 - June 30, 2023
- 410 Gilt - born after July 1, 2023
- 411 Breeding Herd - 1 boar and 3 females
- 412 Sow and un-weaned litter
- 413 Heavy Market Hog - 251 lb. and up
- 414 Middle Market Hog - 201 to 250 lb.
- 415 Light Market Hog - 140 to 200 lb.
- 416 Heavy Feeder Pig - 51 to 139 lb.
- 417 Light Feeder Pig - 50 lb. and under
- 418 Champion Boar
- 419 Champion Female



Custom Class (ribbon only)

- 420 Costume Class - just for fun

Showmanship Classes: All exhibitors must enter Fitting and Showmanship.

- 420 Novice Fitting and Showmanship - Junior or Senior exhibitor who has not shown before
- 421 Junior Fitting and Showmanship - exhibitor 8 to 10 years old as of Jan. 1, 2023
- 422 Intermediate Junior Fitting and Showmanship - exhibitor 11 to 13 years old as of Jan. 1, 2023
- 423 Senior Fitting and Showmanship - exhibitor 14 to 18 years old as of Jan. 1, 2023

Cloverbud Clinics: Exhibitor 5 to 7 years old as of Jan. 1, 2023

- 426 Cloverbud Exhibitor Clinic - 1 animal of any age or breed; all shown together in the same class
- 427 Cloverbud Showmanship Clinic

DIVISION 5 - Goat

Superintendent: Randy Brown

- ✿ Read Fair General Rules, 2023 Animal Health Rules for Fairs and Shows, and Livestock General Rules.
- ✿ **The goat area will receive animals from 8:00 to 9:00 a.m. on the morning of the show.**
- ✿ No horned animals will be allowed (exceptions will be made for market goats and fiber goats - horns must be tipped). No bucks allowed.
- ✿ Exhibitors must provide verification of ownership or lease in the exhibitor's name by June 1, 2023, except kids must be raised and cared for from birth if born after June 1, 2023.
- ✿ **Please indicate the number of animal pens needed on the entry form. Standard pen size is 6 x 6 feet.**
- ✿ A veterinarian's health certificate must be presented before animals are unloaded. All tattoos will be checked. Registration papers are required for all does to be shown in Dairy and Meat Goat Classes.
- ✿ A livestock card must be on display above each animal. The 4-H Fair Association will provide the cards.
- ✿ No pre-show milk out required, but over bagged animals may be penalized in placing at the discretion of the judge and/or superintendent.
- ✿ Cloverbuds will be allowed to show only one animal and will show only in the two designated Cloverbud classes. Cloverbuds may not show a horned animal. Cloverbuds do not need to own or have a written release for the animal shown to participate.
- ✿ All exhibitors in the Goat Division are required to wear the following while showing:
 - Girls:** White shirt or T-shirt; tan or white pants, skirt or shorts
 - Boys:** White shirt or T-shirt; tan or white pants or shortsAll exhibitors must wear closed toe / closed heel shoes or sneakers at all times.
- ✿ Each exhibitor must clean up pens at release time or forfeit premiums. Bring your own brooms, shovels, pitchforks, etc. for cleanup.
- ✿ All exhibitors must enter Showmanship. Exhibitors must fit their own animals. Their showmanship animal must also be shown in a single goat class. All goats shown in a Specialty Class must also have been shown in an individual class.

Premium Points: 25 - 20 - 15 - 10 - 5 (Dairy, Meat, Fiber only)

SHOWMANSHIP - All exhibitors must enter Showmanship.

Dairy Showmanship (including Dairy type goats)

- 501 Senior Showmanship - exhibitor 14 to 18 years old as of Jan. 1, 2023
- 502 Junior Showmanship - exhibitor 8 to 13 years old as of Jan. 1, 2023
- 503 Novice Showmanship - Junior or Senior exhibitor showing for the 1st year

Non - Dairy Showmanship

- 504 Senior Showmanship - exhibitor 14 to 18 years old as of Jan. 1, 2023
- 505 Junior Showmanship - exhibitor 8 to 13 years old as of Jan. 1, 2023
- 506 Novice Showmanship - Junior or Senior exhibitor showing for the 1st year

Cloverbud Showmanship - exhibitor 5 to 7 years old as of Jan. 1, 2023

- 507 Cloverbud Showmanship Clinic
- 508 Cloverbud Clinic Breed Class - 1 animal of any age or breed; all shown in the same class

DIVISION 5 - Goat (cont.)

DAIRY GOAT BREEDS

Enter the breed letter with the class number.

A = Alpine

L = LaMancha

N = Nubian

O = Oberhasli

S = Saanen

T = Toggenburg

ND = Nigerian Dwarf

R = Recorded Grade

SA = Sable

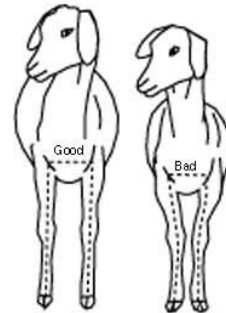
B = Any other dairy type breed

- 510 Junior Doe Kid - 1 to 2 months
- 511 Senior Doe Kid - 3 to 5 months
- 512 Doeling - 6 months to under 1 year
- 513 Yearling - 1 to under 2 yrs.; never freshened
- 514 Yearling - 1 to under 2 years in milk

- 515 Junior Doe Milker - 2 to under 3 years
- 516 Intermediate Milker - 3 to under 5 years
- 517 Senior Doe Milker - 5 to under 7 years
- 518 Aged Doe - over 7 years
- 519 Wether

Specialty Classes - 1 entry per exhibitor per class

- 520 Dam and Daughter
- 521 Exhibitor's Herd - 3 does of 1 breed; at least 1 in milk
- 522 Best Udder
- 523 Produce of Dam - 2 does from the same dam; dam to be named
- 524 Get of Sire - 3 does from 1 sire; sire to be named

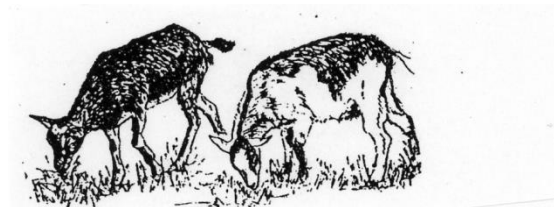


MEAT / MARKET GOAT (specify breed) - Classes 530 - 540 are for meat goat breeds.

- 530 Market Goat – An animal entered in this class may not be entered in any other Meat/Market Goat class. The animal must be part of a recognized 4-H Market Group Program.
- 533 Junior Wether - up to 6 months old
- 534 Senior Wether - 6 to 12 months old
- 535 Doe Kid I - up to 3 months old
- 536 Doe Kid II - 3 to 9 months old
- 537 Senior Doe Kid - 9 to 15 months old
- 538 Doeling - 15 months to 2 years old: never freshened
- 539 Junior Milker - up to 3 years old
- 540 Senior Milker - 3 years or older

Specialty Classes - 1 entry per exhibitor per class

- 545 Dam and Daughter
- 546 Exhibitor's Herd - 3 does of 1 breed; at least 1 in milk
- 547 Produce of Dam - 2 does from the same dam; dam to be named
- 548 Get of Sire - 3 does from 1 sire; sire to be named



FIBER GOAT (angora, cashmere breeds)

- 550 Fiber goat - under 2 years old; doe or wether
- 551 Fiber goat - over 2 years old; doe or wether

DIVISION 5 - Goat (cont.)

UTILITY GOAT

Danish Points: 15 - 10 - 5

Animal may not be entered in any class in the Dairy Goat Breeds, Meat/Market Goat or Fiber Goat sections. One entry per exhibitor per class.

- 555 Pack Goat Obstacle Course Competition - animal must carry a pack with weight in it. Pack weight will be determined based on animal age and weight. A doe or wether may participate. Exhibitor must provide pack; obstacle course provided.
- 556 Driving Goat Class - animal to be in harness pulling a cart or wagon. A doe or wether may participate. Exhibitor must provide equipment; obstacle course provided.

RIBBON ONLY CLASSES - 1 entry per exhibitor per class

- 560 Companion Goat - goat kept for companionship; not for breeding. A doe or wether may participate; no bucks. All breeds and ages shown together. An animal in this class may not be shown in Dairy Goat Breeds, Meat/Market Goat, Fiber Goat or Utility Goat sections.
- 561 Goat Costume
- 562 Goat Obstacle Course

Herdmanship Award

Award selection is based upon how well a junior and a senior exhibitor keep his/her area neat and clean, cares for animals, and cooperates with the superintendent, judge, and other exhibitors.

POSTERS

Premium Points: 5 - 4 - 3

- 570 Goat Poster - a poster that presents a goat related subject or goat produce theme. Name and age must be on back of poster.

Illustration by Lucianna D.
Age 15



DIVISION 5A - Camelid (Llama/Alpaca)

Superintendent:

- ✿ Read Fair General Rules, 2023 Animal Health Rules for Fairs and Shows, and Livestock General Rules.
- ✿ Animals must be owned or leased by June 1, 2023.
- ✿ List breed and age of animal on entry form.
- ✿ A livestock card must be on display above each animal. The 4-H Fair Association will provide the cards.
- ✿ All exhibitors in the Camelid Division are required to wear the following while showing:
 - Girls:** White shirt buttoned at neck; black or dark colored (blue or brown) pants.
 - Boys:** White shirt buttoned at neck; black or dark colored (blue or brown) pants.
- ✿ All exhibitors must wear closed toed dark colored boots or shoes at all times. No sneakers.
- ✿ All animals must be shown by the owner or lessee.
- ✿ **Please indicate the number of animal pens needed on the entry form. Standard pen size is 6 x 6 feet.**
- ✿ Classes will be divided based upon age and / or ability at the discretion of the superintendent or judge on the day of the show.

Ribbon Only Classes

- 580 Field Obstacle Course - obstacles encountered outside
- 581 Public Relations Obstacle Course - obstacles encountered in buildings or other places
where camelids may appear for public relations purposes
- 582 Costume Class - just for fun

Showmanship Classes: All exhibitors must enter Fitting and Showmanship (includes fleece).

- 585 Novice Fitting and Showmanship - Junior or Senior exhibitor who has not shown before
- 586 Junior Fitting and Showmanship - exhibitor 8 to 13 years old as of Jan. 1, 2023
- 587 Senior Fitting and Showmanship - exhibitor 14 to 18 years old as of Jan. 1, 2023

Cloverbud Clinics: Exhibitor 5 to 7 years old as of Jan. 1, 2023

- 590 Cloverbud Exhibitor Clinic - 1 animal of any age or breed; all shown in the same class
- 591 Cloverbud Showmanship Clinic



Herdmanship Award

Award selection is based upon how well the exhibitor keeps his/her area neat and clean, cares for animals, and cooperates with the superintendent, judge, and other exhibitors.

DIVISION 6 - Poultry

Superintendent: Roy Dawson

- ✿ Read Fair General Rules, 2023 Animal Health Rules for Fairs and Shows, and Livestock General Rules.
- ✿ **Poultry area will receive animals from 8:00 to 9:00 a.m. on the morning of the show. Birds may not be unloaded into cages until checked by the superintendent.**
- ✿ **Exhibitors must present valid state certification proving that their birds are from a “Pullorum-Typhoid Clean/Passed” and “Avian Influenza Negative” flock. Any bird showing signs of illness, disease, or lacking state certification will not be admitted.**
- ✿ Contact the Massachusetts State Poultry Inspector at 617-626-1795 at least one month in advance of the fair to schedule blood testing of your flock.
- ✿ Only exhibitors who have pre-registered in advance of the fair will be allowed to make additions and substitutions to their entries. Only 2 additions per exhibitor allowed, if cage space is available.
- ✿ Exhibitors are responsible for their birds at all times. **Exhibitors must provide feed, water, and containers.**
- ✿ Cages and shavings will be provided.
- ✿ **Please indicate the number of pens needed on the entry form.**
- ✿ All exhibitors must enter Showmanship. The showmanship bird does not have to be a bird shown in a poultry class, but it must follow the above health guidelines.
- ✿ All exhibitors are required to wear the following while showing:
 - Girls and Boys:** Clean, white long-sleeved shirt with black or white pants
 - Closed toe / closed heel shoes or sneakers.
- ✿ Only one entry per breed, per class, per exhibitor. **SPECIFY BREED ON THE ENTRY FORM.**
- ✿ Definitions: Cock/Hen/Old is over 1 year old; Cockerel/Pullet/Young is under 1 year old.
 Trio consists of 1 male and 2 females; Pair consists of 1 male and 1 female.

Premium Points: Single Classes/Eggs 10 - 8 - 6 - 4 - 2

Pairs and Trios 12 - 9 - 6 - 3 - 1

Standard

- 601 Cock
- 602 Hen
- 603 Cockerel
- 604 Pullet
- 605 Young Trio
- 606 Old Trio
- 607 Young Pair
- 608 Old Pair

Bantams

- 630 Cock
- 631 Hen
- 632 Cockerel
- 633 Pullet
- 634 Young Trio
- 635 Old Trio
- 636 Young Pair
- 637 Old Pair



Production Poultry

- 610 Production Hen
- 611 Production Pullet
- 612 Meat Type Female
- 613 Meat Type Male

Standard Waterfowl - specify young/old

- 640 Drake
- 641 Duck
- 642 Duck Pair
- 643 Gander
- 644 Goose
- 645 Geese Pair

Eggs

- 615 Eggs - 1 dozen; 1 entry per size/color
- 616 Largest Egg - ribbon class only
- 617 Smallest Egg - ribbon class only

Guinea Fowl - specify young/old

- 650 Cock
- 651 Hen
- 652 Guinea Pair

Turkey - specify young/old

- 620 Tom
- 621 Hen

DIVISION 6 - Poultry (cont.)

Showmanship Classes: All exhibitors must enter Showmanship. Premium Points: 10 - 8 - 6 - 4 - 2

- 660 Novice Showmanship - Junior or Senior exhibitor showing for the 1st year
- 661 Junior Showmanship - exhibitor 8 to 13 years old as of Jan. 1, 2023
- 662 Senior Showmanship - exhibitor 14 to 18 years old as of Jan. 1, 2023

Cloverbud Clinics: Exhibitor 5 to 7 years old as of Jan. 1, 2023

- 665 Cloverbud Breed Clinic - Cloverbuds may enter eggs and only 1 bird from the above classes
- 666 Cloverbud Showmanship Clinic

DIVISION 7 - Rabbit and Cavy

Superintendent:

- ✿ An American Rabbit Breeders Association (ARBA) judge will be present.
- ✿ Read Fair General Rules, 2023 Animal Health Rules for Fairs and Shows, and Livestock General Rules.
- ✿ Entries close **July 12, 2023**. Please print clearly and legibly on the "*Rabbit/Cavy Show Entry Form*" located in the back of the fair book. Substitutions or changes may be made in the same class or breed only.
- ✿ Entry fee: \$1.50 per animal; Pet Class and Costume Class entries - \$.50 per animal (limit one animal per class/per exhibitor). Send full fee with entry. No refund on scratches.
- ✿ **Judging starts promptly at 9:30 a.m.**
- ✿ This is an official ARBA youth sanctioned show, but you do not need to be an ARBA member to enter. This show is governed by the latest rules of the ARBA.
- ✿ Premiums will be paid only to youth in Hampden County and registered 4-H members in Berkshire, Franklin, Hampshire, and Worcester Counties.
- ✿ A current veterinarian's health certificate must be presented before an animal is checked in. All tattoos will be checked. No animal will be allowed without a valid health certificate.
- ✿ Any animal showing signs of disease will be barred from the fair.
- ✿ All animals will be given a coop number that will be placed in the right ear in black ink or marker.
- ✿ All animals must have a permanent and legible tattoo in the left ear, except in the Pet and Costume Classes.
- ✿ This is a one day, box show. All owners are to provide adequate caging and care for their own animals. All carrying cages must have solid bottoms. Exhibitors are encouraged to bring their own fans, ice, etc. to keep their animals comfortable.
- ✿ All exhibitors **must be present and must groom and carry their own animals to the table** unless writing for a judge. **NO ADULTS MAY HELP!** Youth may assist other youth when necessary.
- ✿ Animals entered in the Rabbit and Cavy Breed Classes may not also be entered in the Rabbit and Cavy Pet Class.
- ✿ Each exhibitor is responsible for bringing their own brooms, shovels, etc. for cleanup. Each exhibitor must clean up their own area (remove trash and debris - shavings, hay, fur) and take down cages and pens (dividers), sweep area, and load trucks, if necessary. Failure to do so will result in forfeiting premium money.
- ✿ **No animals will be released before 5:00 p.m., under any circumstances.**
- ✿ There will be no vendors allowed at this fair, however 4-H members, exhibiting in the show, will be allowed to sell their rabbits providing they pre-register with the Rabbit Superintendent the day of the show.
- ✿ All exhibitors are required to wear long sleeves while showing.
- ✿ Awards will be presented to the top seven breeds with 10 or more entries. All other best of breeds will receive rosettes.

DIVISION 7 - Rabbit and Cavy (cont.)

Premium Points: 10 - 8 - 6 - 4 - 2

Classes 701 - 706 follow the guidelines below in A and B.

A. In breeds maturing **over 10 lbs.** (known as commercial), the following age classifications apply:

Senior	8 months or older
Intermediate	6 to 8 months
Junior	under 6 months

B. In breeds maturing **under 10 lbs.** (known as fancy), the following age classifications apply:

Senior	6 months or older
Junior	under 6 months

Specify breed on entry form.

- 701 Buck - Junior class
- 702 Buck - Intermediate class
- 703 Buck - Senior class
- 704 Doe - Junior class
- 705 Doe - Intermediate class
- 706 Doe - Senior class

- 707 Rabbit and Cavy Pet Class - exhibitor will be asked questions about their pet (e.g. breed, age, sex, feeding, grooming, etc).
- 708 Rabbit and Cavy Pet Costume Class (no premiums paid) - create a costume for your rabbit or cavy to model.

- 709 Cavy - Junior Boar; under 4 months
- 710 Cavy - Junior Sow; under 4 months
- 711 Cavy - Intermediate Boar; 4 to 6 months
- 712 Cavy - Intermediate Sow; 4 to 6 months
- 713 Cavy - Senior Boar; over 6 months
- 714 Cavy - Senior Sow; over 6 months

Showmanship Classes: All exhibitors must enter Showmanship and Written Knowledge Activity.

Premium Points for Classes 717 - 719: 10 - 8 - 6 - 4 - 2

- ✿ Written test to be given beginning at 9:00 a.m. and must be completed by 2:00 p.m.
- ✿ Showmanship begins at 10:30 a.m. and must be completed by 2:00 p.m.
- ✿ Awards will be awarded for combined top score in Novice, Junior, and Senior classes.
- ✿ The top combined scores will compete together for the title of "Best Rabbit Showman".

- 715 Cloverbud Breed Clinic - exhibitor 5 to 7 years old as of Jan. 1, 2023
- 716 Cloverbud Showmanship Clinic - exhibitor 5 to 7 years old as of Jan. 1, 2023
- 717 Novice Showmanship - Junior or Senior 1st year exhibitor
- 718 Junior Showmanship - exhibitor 8 to 13 years old as of Jan. 1, 2023
- 719 Senior Showmanship - exhibitor 14 to 18 years old as of Jan. 1, 2023
- 720 Cloverbud Knowledge Activity - exhibitor 5 to 7 years old as of Jan. 1, 2023
- 721 Novice Written Knowledge Activity - Junior or Senior 1st year exhibitor
- 722 Junior Written Knowledge Activity - exhibitor 8 to 13 years old as of Jan. 1, 2023
- 723 Senior Written Knowledge Activity - exhibitor 14 to 18 years old as of Jan. 1, 2023

DIVISION 7 - Rabbit and Cavy (cont.)

<u>ARBA Membership Dues</u> (for your information only)			<u>Send membership fee to:</u>
	<u>Yearly</u>	<u>3 year</u>	
Adult:	\$ 20	\$ 50	American Rabbit Breeders Association
Two Adults (same address):	\$ 30	\$ 75	P.O. Box 400
Youth:	\$ 12	\$ 30	Knox, PA 16232-0400

The 100th American Rabbit Breeders Association National Convention and Show will be held in
 Louisville, Kentucky
 October 7, 2023 - November 11, 2023



Illustration by Olive G.
Age 12



DIVISION 8 - Model Horse Show

Superintendent: Penny Blomgren

Model Horse Show: Starts at 11 a.m.

- ✿ Read [Fair General Rules](#) and [Hall Exhibit General Rules](#).
- ✿ This activity will mirror a live horse show, but model horses will be exhibited.
- ✿ Only one entry per exhibitor per class.
- ✿ Entries will be in division by Cloverbud, Junior and Senior classes.
- ✿ Exhibitors may use handmade tack, support obstacles and presentation pieces.
- ✿ Place cards may be neatly hand written or typed (Class #, Exhibitor #, Class description). Each entry must have a hoof tag with an Exhibitor number for identification.
- ✿ There are 8 classes to enter with placings 1st, 2nd, and 3rd and participant. First place entries in each class will compete for Champion and Reserve Champion placing.
- ✿ Judging will begin at 11 a.m. Exhibitors must leave the area during judging.
- ✿ Model classes will be judged individually and given scores based on outlined criteria, cleanliness and presentation.
- ✿ Entries must be in place by 10:30 a.m. and remain in place until the end of the awards ceremony or 5 p.m., whichever comes later.

Classes:

Danish Points: 15 - 12 - 8

Halter: Model must have a well-fitting halter in place.

Breed: Model must be accompanied with a place card identifying breed and general uses of the breed. A halter is not required.

Performance: Model must have appropriate tack in place and accompanied with a place card that describes discipline and what class horse is performing in (i.e. Western, Hunt Seat, Saddle Seat, etc.).

Trail: Model must have appropriate tack in place and a trail obstacle (i.e. rails, gate, cones) with an accompanying place card that describes what the horse must accomplish during this obstacle.

Jumping: Model must have appropriate tack in place with a jump obstacle and must be accompanied with a place card that describes the obstacle and what the horse must accomplish during this activity.

Costume: Model should be adorned with an eye-catching costume and accompanied by a place card that describes the costume and few lines of how the costume was made.

Mini Class: Model entry must be under 4 inches in height at the shoulder and be accompanied with a place card that describes the horse and what its uses might be. No halter required for this class.

Collector's Entry: Entries will consist of 5 model horses of any size that have special meaning to the exhibitor and be accompanied with a place card that explains why these particular models were selected to show.

Horse Demonstration:

There will be demonstrations in the Mallory Arena to include in-hand safety, horsemanship skill and tack identification. These demonstrations will be followed by a brief question and answer period.

Horse Knowledge Booth and Equine Activity:

An information booth with handouts of horse knowledge and terminology, as well as youth based equine activities, will be available.

Judged Hobby Horse Show:

Bring your own stick horse if you have one (but not required) to engage in horse jumping, performance walk, trot and canter, and versatility classes. Classes will be judged for form, creativity and the ability to have fun!

DIVISION 8A - Dog Show

Superintendent: Emily Leckie and Caitlynn Tippet

- ✿ Read Fair General Rules, 2023 Animal Health Rules for Fairs and Shows, and Livestock General Rules.
- ✿ Premiums will be paid only to youth in Hampden County and registered 4-H members in Berkshire, Franklin, Hampshire, and Worcester Counties.
- ✿ The dog does not have to be owned by the exhibitor, but the exhibitor must have major responsibility for the animal's care and total responsibility for the training of the dog for at least three months prior to the date of the show.
- ✿ All dogs must be at least six months old. Mixed breed dogs are welcome.
- ✿ Female dogs in season will not be allowed in the show.
- ✿ All exhibitors must be in control of their dogs. All dogs must be on a leash or crated, and must not be left unattended. Exhibitors are responsible for the actions/damages caused by their dog. Exhibitors are responsible for cleaning up after their dogs.
- ✿ All dogs must have up-to-date vaccinations. **A copy of the dog's rabies and health record must be brought to the show.** Health papers will be checked at registration. The show committee reserves the right to refuse any dog admittance to the show for health or safety reasons.
- ✿ Exhibitors must present a neat, clean appearance. Show uniform is a white shirt/blouse and tan, white, or green pants/skirt. No jeans or sandals allowed.

SHOWMANSHIP CLASSES: All exhibitors must enter Showmanship.

Danish Points: 15 - 10 - 5

Dogs are to be shown on a martingale leash or suitable light choke chain and cotton web or nylon leash. Both the handler and the dog will be judged. The conformation of the dog is not judged, but general condition and cleanliness are important. Exhibitors will be asked questions about the care of their dog.

Showmanship Scoring Chart

Dog (30%)	Pts.	Handler (20%)	Pts.	Handling of Dog (50)%	Pts.
General Condition	10	Appearance	10	Gaiting	25
Condition of Nails	5	Cleanliness	10	Posing	25
Condition of Teeth	5				
Condition of Ears	5				
Condition of Coat	5				

Novice: Handler 7 to 18 years old as of Jan. 1, 2023

851 Inexperienced Novice - handler who has not shown before

Section A: Juniors 8 to 13 years old as of Jan. 1, 2023

852 Novice Junior Showmanship - 1st or 2nd year handler

853 Intermediate Junior - handler with 3 to 4 years experience

854 Junior Showmanship - handler with more than 4 years experience

855 Advanced Junior Showmanship - handler with three 4-H wins or who has shown 3 or more times (in their lifetime) in non-4-H point shows, such as AKC, UKC, ASCA, etc. and/or who handles dogs for other people. Any handler may enter.



Section B: Seniors 14 to 18 years old as of Jan. 1, 2023

856 Novice Senior Showmanship – 1st or 2nd year handler

857 Intermediate Senior Showmanship - handler with 3 to 4 years experience

858 Senior Showmanship - handler with more than 4 years experience

859 Advanced Senior Showmanship - handler with three 4-H wins or handler with three 4-H wins or who has shown 3 or more times (in their lifetime) in non-4-H point shows, such as AKC, UKC, ASCA, etc. and/or who handles dogs for other people. Any handler may enter.

DIVISION 8A - Dog Show (cont.)

OBEDIENCE CLASSES: Follows AKC guidelines

Danish Points: 15 - 10 - 5

All Obedience classes are divided into Junior and Senior divisions.

Juniors: handler 8 to 13 years old as of Jan. 1, 2023

Seniors: handler 14 to 18 years old as of Jan. 1, 2023

Dogs are to be shown with buckle or suitable leather, chain, or nylon choke collar. A 6 foot leash is required. Dogs must complete all individual and group exercises. Any dog not returning for the group exercises will be ineligible to receive an award or premium. Any exhibitor not remaining until 5:00 p.m. will forfeit premiums.

Section C: On Leash Division - Classes 862 - 874

Obedience Scoring Chart

Exercise	Pts.	Exercise	Pts.
Sit and Stay 1 min. (on leash)	30	Figure 8 (on leash)	25
Down and Stay 3 min. (on leash)	30	Heel (on leash)	45
Stand for examination (on leash)	30	Recall (on leash)	40

Sub-Novice A - Handlers who have not previously trained a dog. The dogs in this class must not have had training beyond the beginner level. Dogs will be on a loose leash and scored on the basis of 200 points. The dog and handler may only enter this class for one year.

862 Junior and Senior Sub-Novice A

Sub-Novice B - Handlers who have previously trained a dog at the beginner or more advanced levels of training; or have shown this dog at the Sub-Novice A level in previous years. Dogs must not have received a qualifying score in Novice. Dogs will be on a loose leash and scored on the basis of 200 points.

863 Junior Sub-Novice B

864 Senior Sub-Novice B

Assistance Dog Sub-Novice A - Handlers who have not previously trained an Assistance Dog. The dogs in this class must not have trained beyond the beginner level. Assistance Dogs will be expected to forward between the loin and hip region; on recall the dog comes toward you and immediately to your left side. Dogs will be on a loose leash and scored on the basis of 200 points.

865 Junior Assistance Dog Sub-Novice A

866 Senior Assistance Dog Sub-Novice A

Assistance Dog Sub-Novice B - Handlers who have previously trained an Assistance Dog. The dogs in this class must not have trained beyond the beginner level. Assistance Dogs will be expected to forward between the loin and hip region; on recall the dog comes toward you and immediately to your left side. Dogs will be on loose leash and scored on the basis of 200 points.

867 Junior Assistance Dog Sub-Novice B

868 Senior Assistance Dog Sub-Novice B

Sub-Novice C - Handlers who have been in Sub-Novice B for several years. UKC rules will be used as guidelines. Must have been shown in Sub-Novice B at least 2 years; no training beyond Sub-Novice level. Will be based on UKC Sub-Novice Class. Exercises include: Heel on leash and Figure 8; Stand for exam; Recall over high jump; Long sit (1 minute); and Honor exercise. Score on the basis of 200 points.

For complete rules go to <http://res.ukcdogs.com/pdf/2013ObedienceRulebookInsert.pdf>.

869 Junior Sub-Novice C

870 Senior Sub-Novice C

DIVISION 8A - Dog Show (cont.)

Section D: The Beginner Novice A and Beginner Novice B classes (872 - 875) are based on the AKC's Beginner Novice class. Dogs must not have a qualifying score in Novice or more advanced obedience classes. For a complete explanation, please see the "AKC Obedience Rules and Regulations" or visit <http://www.akc.org/pdfs/rulebooks/RO2999.pdf>. The Beginner Novice class will be considered an *On-Lead Obedience* class.

Beginner Novice A - Handlers who have not previously trained a dog at the beginner novice level or more advanced levels. Dog must not have received a qualifying score in a more advanced class. Dogs will be on a loose leash and scored on the basis of 200 points. Dogs and handlers are only eligible for this class for 1 year.

- 871 Junior Beginner Novice A
- 872 Senior Beginner Novice A

Beginner Novice B - Handlers who have previously trained a dog at this level or more advanced levels of training or have shown this dog in Beginner Novice A level in previous years. Dogs in this class must not have been trained beyond Beginner Novice. Dogs must not have received a qualifying score in a more advanced class. Dogs will be on a loose leash and scored on the basis of 200 points.

- 873 Junior Beginner Novice B
- 874 Senior Beginner Novice B

Section E: Off Leash Division - Classes 875 - 890

Preferred Novice:

Preferred Novice A - for dogs that have not been shown competitively in an upper level class (Novice, Pre-Graduate Novice, Graduate Novice, Open, or Utility) or handlers that have never trained a dog at Preferred Novice or more advanced levels. Dogs that have completed a CD or its equivalent are not eligible for this class. A dog has earned 3 blue Danish ribbons (or 3 qualifying scores of 170 or more points), it must move up to Novice or more advanced level the next 4-H year.

Preferred Novice Scoring Chart

Exercise	Pts.	Exercise	Pts.
Heel (on leash) and Figure 8	40	Stand for Exam (off leash)	30
Stay - Sit or Down	30	Heel Free	40
Recall (off leash) 615 Eggs - 1 dozen; 1 entry per size/color	30	Sit Stay - Get your Leash	30

- 875 Junior Preferred Novice A
- 876 Senior Preferred Novice A

Preferred Novice B - for dogs that have been shown in Preferred Novice in previous years or handlers that have trained a dog at Preferred Novice or more advanced levels. Dogs that have completed a CD or its equivalent are not eligible for this class. Once a dog has earned 3 blue Danish ribbons (or 3 qualifying scores of 170 or more points), it must move up to Novice or more advanced level the next 4-H year.

- 877 Junior Preferred Novice B
- 878 Senior Preferred Novice B

DIVISION 8A - Dog Show (cont.)

Novice A - Handlers who have not previously trained a dog at Novice or more advanced levels of training. The dogs in this class may have completed the novice level of training, but must not have had training beyond this level. All of the exercises except the Heel on leash and the Figure 8 will be done off leash. Scored on the basis of 200 points. Dogs must not have completed the C.D.

Novice Scoring Chart

Exercise	Pts.	Exercise	Pts.
Heel (on leash) and Figure 8	40	Stand for Exam	30
Recall (off leash)	30	Heel Free	40
Group Sit 1 minute (on leash)	15	Sit Stay – Get your Leash	30
Group Down 3 minutes (on leash)	15		

- 879 Junior Novice A
880 Senior Novice A

Novice B - Handlers who have previously trained a dog at Novice or more advanced levels of training or have shown this dog at this level previously. All of the exercises except Heel on leash and the Figure 8 will be done off leash. Dogs that have finished their C.D. or dogs not having received a qualifying score in Graduate Novice may be shown in this class. Scored on the basis of 200 points.

- 881 Junior Novice B
882 Senior Novice B

Pre-Graduate Novice - For dogs that have not received a qualifying score in Open. Dogs may have received a C.D. Judging shall be as in Novice classes except the Figure 8 is off leash. The Long sit and down shall be with handlers out of sight. Drop on recall. Scoring on a basis of 200 points.

- 883 Junior Pre-Graduate Novice
884 Senior Pre-Graduate Novice

Pre-Graduate Novice Scoring Chart

Exercise	Pts.	Exercise	Pts.
Heel (on leash)	40	Drop on recall	30
Stand for examination	30	Long sit (3 min.)	30
Heel free and Figure 8	40	Long down (5 min.)	30

Graduate Novice - For dogs that have not received a qualifying score in Open or Utility. Dogs may have received a CD or its equivalent. Once a dog has earned 3 blue Danish ribbons (or 3 qualifying scores of 170 or more points), it must move up to Open A or more advanced level the next 4-H year.

Graduate Novice Scoring

Exercise	Pts.	Exercise	Pts.
Heel Free and Figure 8 (off leash)	40	Dumbbell Recall over High Jump	30
Drop on Recall	30	Recall Over Broad Jump	30
Dumbbell Recall	40	Stay-Get Your Leash (Sit, Down)	30

- 885 Junior Graduate Novice
886 Senior Graduate Novice

DIVISION 8A - Dog Show (cont.)

Open A and B Combined - Open to any handler who has completed Novice classes or received a C.D. degree. The same handler must complete all exercises.

- 887 Junior Open A and B Combined
- 888 Senior Open A and B Combined

Open A and B Combined Scoring Chart

Exercise	Pts.	Exercise	Pts.
Heel free and Figure 8	40	Broad jump	20
Drop on recall	30	Long sit	30
Retrieve over high jump	30	Long down	30
Retrieve on flat	20		

Utility - Open to any dog that has completed Open classes or received a C.D.X. degree. The same handler must handle the same dog through all exercises.

- 889 Junior Utility
- 890 Senior Utility

Utility Scoring Chart

Exercise	Pts.	Exercise	Pts.
Scent discrimination article 1	30	Signal exercise	40
Scent discrimination article 2	30	Directed retrieve	30
Moving stand and examination	30	Directed jumping	40

Cloverbud Clinics: Handler 5 to 7 years old as of Jan. 1, 2023

- 891 Cloverbud Showmanship Clinic
- 892 Cloverbud Obedience Clinic



No premiums paid in the following classes.

- 893 Rally - a rally course will be set up for all to try.
- 894 Games - will be held only if time allows; recall relay, egg and spoon weave, recall past food, tunnel race; various obstacle courses will be set up

Illustration by Landon N.
Age 6



HAMPDEN COUNTY 4-H / YOUTH FAIR

Hall Exhibit General Rules

1. Read Fair General Rules.
2. Age Requirements - No child under 5 years old, as of January 1, 2023 is allowed to exhibit.
 - ☘ **Cloverbud Division** - Youth 5 to 7 years old as of January 1, 2023 will set up their exhibits in a designated area. Non-judgmental observation will take place and ribbons will be awarded.
 - ☘ **Junior Division** - Youth 8 to 13 years old as of January 1, 2023
 - ☘ **Senior Division** - Youth 14 to 18 years old as of January 1, 2023.
Danish or modified Danish judging will be used for Juniors and Seniors.
3. Entries - **No more than one entry per class per exhibitor or club** accepted unless otherwise specified. Exhibitors failing to comply with the premium list requirements will be disqualified.
4. **Absolutely no hall entries accepted on the day of the Fair.**
5. All exhibits must be the result of the exhibitor's own effort within the current fair year, August 2022 through July 2023.
6. An exhibit may not be shared between classes (e.g. the baked good in the Homemaker Exhibit may not also be entered as a baked good in the Food Division).
7. All exhibits must be clean and presentable.
8. All exhibits must be set up by the youth exhibitor **without** adult assistance.
9. Exhibit Set-Up
 - Hall entries will be received beginning at 3:00 p.m. on Friday, July 21st in the Mallary Complex.
 - **No hall exhibits will be accepted before 3:00 p.m.**
 - **Arrive early to set up. Organize your entries prior to your arrival to assist in quick set-up.**
 - Specific areas are designated for set up.
 - All hall exhibits **MUST BE IN PLACE BY 6:30 P.M.**, Friday, July 21st.
 - **Exhibitors must leave the building by 6:30 p.m.**
 - All Hall exhibits **MUST REMAIN** in place until 5:00 p.m. or after the awards ceremony, whichever is later on Saturday, July 22nd.
10. The judges reserve the right to subdivide classes based on the number of entries.
11. The judges and the Hampden County 4H/Youth Fair Association reserve the right to dispose of any exhibit that poses an immediate health hazard.
12. Exhibits not picked up by 5:30 p.m., Saturday, July 22nd will be discarded.

**EXHIBITS ARE NOT TO BE REMOVED BEFORE 5:00 P.M.
ON SATURDAY, JULY 22nd**

DIVISION 9 - Club and Group Exhibit

☀ Read Fair General Rules and Hall Exhibit General Rules.

901 Working Exhibit

Working exhibits are one of the most important components of the 4-H/Youth Fair as they allow fair visitors an opportunity to see 4-H members in action. A working exhibit may consist of an individual or group performing or working on some phase of their club's activities. Working exhibits will be presented on Saturday, from 10:00 a.m. to 2:00 p.m. for 30 minutes to one-hour periods. Entrants will be contacted to schedule time periods.

Rules:

- ☀ A working exhibit must be submitted on a separate *Hampden County 4-H/Youth Fair Entry Form* in the leader's name.
- ☀ The exhibit should be an active display or demonstration of some part of a 4-H project.
- ☀ Up to 3 **different** working exhibits may be submitted per club.
- ☀ Youth doing the exhibit should explain to spectators what they are doing and answer questions.
- ☀ Clubs will be awarded a \$50.00 premium for each worthy working exhibit.

902 Club Exhibit

Premium Points: 50 - 45 - 40 - 35 - 30 - 25 - 20

- ☀ Club exhibits must be submitted on a separate *Hampden County 4-H/Youth Fair Entry Form* in the leader's name.
- ☀ The exhibit must tell a story of the club's work or activities; it must not be a display of work done.
- ☀ Up to 3 **different** club exhibits may be submitted per club.
- ☀ All club exhibits must have a judge's information envelope containing the following information: name of the club, name of the club's leader(s), nature of the club, names and ages of the club's members, number of members who helped with the display.
- ☀ The exhibit must be set up by club members. Leaders may assist, but may not set up the exhibit alone.
- ☀ Exhibit space is 3 feet by 6 feet. The club must furnish the background.

Club Exhibit Score Sheet	Points
Educational value and originality: tells a story to the public, interesting presentation	50
General effect: arrangement, color scheme, lighting, neatness, attractiveness, scale (relationship to size), etc.	25
Workmanship: quality of materials used and workmanship	10
Signs: title of exhibit (subject or theme) largest, name of club and town, name of leader(s) and members, other signs as needed, envelope with judge's information	10
4-H Clover: must be included in the exhibit	5
Total	100

Club Promotional Item

Danish Points: 8 - 6 - 4

Includes a jacket, shirt, banner, etc. with the club logo.

903 Designed by club and printed commercially

904 Designed and printed by club

905 Club Scrapbook

Danish Points: 8 - 6 - 4

A collection of club activities and/or projects displayed in a notebook or photo album.

DIVISION 9 - Club and Group Exhibit (cont.)

906 Club Media

Danish Points: 8 - 6 - 4

A collection of media (newspaper articles, pictures, social media samplings) that focus on the club and/or club members during the past year.

907 School, Group, or Club Hall Exhibit

Danish Points: 8 - 6 - 4

One item relating to any class in the Hall Exhibit section of the fair book.

908 Hampden County 4-H / Youth Fair Promotional Media

One or more news release(s) appearing in the local media (newspaper, radio, television, internet, social media, etc.) from May through July of the current year promoting the fair. Clubs will be awarded a \$50.00 premium for a worthy promotional media exhibit.

909 Food Sculpture

Clubs or groups can showcase their design and construction skills by creating a community service sculpture using non-perishable food items. Club or group entrants will donate all non-perishable food items (pet food included) at the end of the fair. A \$75.00 premium will be awarded to the clubs or groups with a worthy display.

Rules:

- ✿ Sculpture space is up to 4 feet by 4 feet maximum.
- ✿ Clubs and groups are responsible for acquiring the items used in their sculpture.
- ✿ Non-perishable food item containers should be plastic, cans, or boxes. No glass containers allowed.
- ✿ Alcohol, perishable food, junk food, personal care products, and open packages are not allowed. The use of healthy food options is encouraged.
- ✿ Save all packing boxes/bags for repacking the items at the end of the fair.
- ✿ All labels must be legible, not covered, stripped off, or altered.
- ✿ Items can be joined using tape, wire, Velcro, etc., as long as the removal does not damage the labels or food containers during deconstruction.
- ✿ Signage may be used to help in the presentation of the masterpiece such as title of the structure, types and quantities of the items used, etc.
- ✿ Entrants are responsible for deconstructing the sculpture at the end of the fair and transporting the items to a food bank or other non-profit organization.

4-H Motto

“To Make the Best Better”



4-H Slogan

“Learn by Doing”

DIVISION 9A - Individual Exhibit

✿ Read [Fair General Rules](#) and [Hall Exhibit General Rules](#).

950 4-H Theme

Danish Points: 8 - 6 - 4

Item made with a 4-H theme or fabric.

951 Patriotic Theme

Danish Points: 8 - 6 - 4

Item made using a patriotic theme.

952 Homemaker Exhibit

Premium Points: 50 - 45 - 40 - 35

All items in this class must be made by the exhibitor. Points are given for each entry in the exhibit. The best *Homemaker Exhibit* must score a minimum of 80 points. If a backdrop is used (highly recommended), it must be self-supporting and provided by the exhibitor.

Homemaker Exhibit Requirements		Points
1 sewn garment from a class listed in the fair book		25
1 needlecraft item from a class listed in the fair book		20
2 canning jars from a class listed in the fair book		20
1 baked good - pie, cake, or bread; scratch recipe only; include recipe		15
1 craft or woodworking item from a class listed in the fair book		15
Presentation of the items		5
Total		100

953 Handy Maker Exhibit

Premium Points: 50 - 45 - 40 - 35

All items in this class must be made by the exhibitor. Points are given for each entry in the exhibit. The best *Handy Maker Exhibit* must score a minimum of 80 points. If a backdrop is used (highly recommended), it must be self-supporting and provided by the exhibitor.

Handy Maker Exhibit Requirements		Points
1 woodworking article from a class listed in the fair book		25
1 conservation collection from a class listed in the fair book		25
1 photograph or art exhibit from a class listed in the fair book		20
2 different crafts from classes listed in the fair book		25
Presentation of the items		5
Total		100

954 Green Thumb Exhibit

Premium Points: 50 - 45 - 40 - 35

The items in this class must be grown, selected, and arranged by the exhibitor. Points are given for each entry in the exhibit. The best *Green Thumb Exhibit* must score a minimum of 80 points. If a backdrop is used, it must be self-supporting and provided by the exhibitor.

Green Thumb Exhibit Requirements		Points
1 hanging house plant		15
1 potted plant, terrarium, or dish garden		20
1 plate of vegetables from a class listed in the fair book		20
1 fresh floral arrangement from a class listed in the fair book		20
1 vase of cut flowers from a class listed in the fair book		20
Presentation of the items		5
Total		100

DIVISION 9A - Individual Exhibit (cont.)

955 From Start to Finish Exhibit

Danish Points: 30 - 25 - 15

Select an item that you have raised, grown, or made and show the progression of how it might be used in 3 stages. Present the 3 stages in an arrangement with labels.

Examples		
Stage 1	Stage 2	Stage 3
Blueberries	Canned Blueberries	Blueberry Muffins
Sheep (photo)	Fleece	Felted Item
Garlic plant (photo)	Garlic Bulb	Garlic Vinegar

956-959 Educational Exhibit

Danish Points: 15 - 12 - 8

An exhibit that demonstrates or tells about a person, project, or activity that cannot be exhibited in any other fair category (i.e. environment, theater arts, etc.). The display may be a collection of items or an educational exhibit. Maximum space allowed is 3 feet by 3 feet.

- | | |
|---|---|
| <p>956 Video</p> <p>957 Display</p> | <p>958 Individual Item</p> <p>959 Other</p> |
|---|---|

960 Adult Exhibit

Rosette ribbon awarded

The 4-H Program would not be possible without the generous gift of time and expertise from many talented adults. We invite leaders, volunteers, and parents to exhibit in the hall. You may exhibit one article from any one class listed in the Hall Exhibit section of the fair book.

961-962 4-H Records/Scrapbook

Danish Points: 8 - 6 - 4

- 961** 4-H record in a binder with a summary, 4-H story, project records, and support material.
- 962** 4-H scrapbook including a collection of pictures of 4-H projects and activities, etc. with captions.

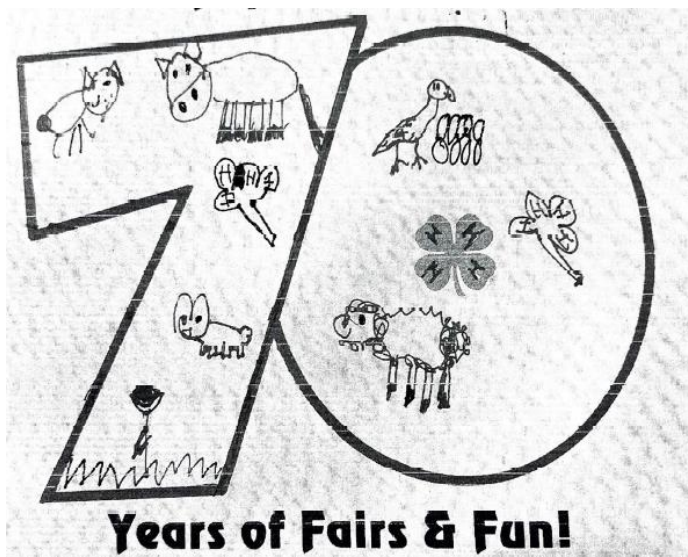


Illustration by Autumn T.
Age 6

DIVISION 10 - Vegetable, Fruit, and Environmental Collections

- ✿ Read Fair General Rules and Hall Exhibit General Rules.
- ✿ Fruits and vegetables must be grown, selected, and arranged by the exhibitor.
- ✿ **No store bought fruits or vegetables allowed.**
- ✿ Include the exact number of specimens required.
- ✿ Specimens should be uniform - the same size, shape, and color.
- ✿ Quality is considered - not too large, not too small, fine textured, etc.
- ✿ Exhibits should be free from blemishes, no cuts, bruises, insect injury, or disease.
- ✿ Specimens should be washed or wiped as one would prepare for market.
- ✿ Use paper plates to display items in Classes 1001 - 1035 and 1037-1038.
- ✿ **No glass containers permitted.**



Vegetable

Premium Points: 8 - 7 - 6 - 5 - 4

1001	Beans - green snap; 15 pods	1020	Peas - 10 pods
1002	Beans - yellow snap; 15 pods	1021	Peppers - 5 specimens
1003	Beans - lima; 15 pods	1022	Potatoes - white or red; 5 specimens; wipe, do not wash
1004	Beans - shell; 15 pods	1023	Radishes - 10 specimens; cut top to 1"
1005	Beets - 5 specimens; cut top to 1"	1024	Squash - green summer; 2 specimens
1006	Broccoli - 2 specimens	1025	Squash - yellow summer; 2 specimens
1007	Cabbage - green or red; 2 heads	1026	Squash - white summer; 2 specimens
1008	Carrots - 5 specimens; cut top to 1"	1027	Squash - winter; 2 specimens
1009	Cauliflower - 2 specimens	1028	Tomatoes - green; 5 specimens; stems on
1010	Corn - sweet; 5 ears; husk on half	1029	Tomatoes - red; 5 specimens; stems off
1011	Cucumbers - 2 specimens; stems on	1030	Tomatoes - cherry, pear, plum; 10 red specimens; stems off
1012	Cucumbers - 10 pickling; stems on	1035	Other Vegetable not mentioned - list type: limit of 3 different entries
1013	Eggplant - 2 specimens	1036	Mini Garden Project - patio tomato plant in a container
1014	Kohlrabi - 3 specimens	1037	Decorated Vegetable - ribbon only
1015	Leeks - 3 specimens	1038	Largest Vegetable - ribbon only
1016	Lettuce - 2 heads or bunches		
1017	Onions - white; 5 specimens; do not peel		
1018	Onions - yellow; 5 specimens; do not peel		
1019	Onions - red; 5 specimens; do not peel		

Score Sheet for Classes 1040 and 1041		Points
Quality		50
Arrangement		30
Utility Value		10
Number of Varieties		10
	Total	100

Premium Points: 32 - 25 - 20 - 15 - 10

1040 Display of at least 6 kinds of vegetables covering at least 10 square feet of table space

Premium Points: 15 - 12 - 10 - 8 - 6

1041 Display of at least 5 kinds of vegetables arranged in an appropriate, unbreakable container

DIVISION 10 - Vegetable, Fruit, and Environmental Collections (cont.)

Fruit

Premium Points: 8 - 7 - 6 - 5 - 4

Exhibitor must provide basket for display.

- | | |
|---------------------------------|--|
| 1050 Raspberry - 1 pint basket | 1053 Strawberry - 1 pint basket |
| 1051 Blackberry - 1 pint basket | 1054 Other Fruit not mentioned - label kind; |
| 1052 Blueberry - 1 pint basket | limit of 3 different entries |

Environmental Collections

Premium Points: 8 - 7 - 6 - 5 - 4

The collections must be made by the exhibitor during the past 12 months.

No items from the ENDANGERED SPECIES LIST will be allowed.

Refer to <https://www.mass.gov/info-details/list-of-endangered-threatened-and-special-concern-species>.

- 1059 Collection of at least 5 garden pests with names and recommended control measures.
- 1060 Collection of 10 or more different leaf prints identified. (No tracings; similar to a fingerprint).
- 1061 Collection of 10 or more different leaves mounted and named. (Label collection location).
- 1062 Collection of 10 or more different insects mounted and named. All insects must be dead and properly prepared for display before mounting. (Label collection location).
- 1063 Collection of 10 or more different common weeds mounted and named. (Roots not necessary).
- 1064 Collection of 10 or more different wild flowers mounted and named. (Roots not necessary).
- 1065 Collection of 10 or more different native wood mounted and named. (Each piece cut 3 different ways).
- 1066 Collection of 10 or more different minerals mounted and named. (Label collection location).
- 1067 Collection of 10 or more different items in the same category (not listed above) related to the environment.

DIVISION 11 - Flower

- ✿ Read Fair General Rules and Hall Exhibit General Rules.
- ✿ All flowers must be grown, selected, and arranged by the exhibitor, except for Classes 1149, 1150, and 1159 where flowers may be purchased or otherwise obtained, but must be arranged by exhibitor.
- ✿ Appropriate containers are to be furnished by the exhibitor.
- ✿ Be sure to include the exact number of specimens specified. A **bloom** is a single flower; a **stem** is part of the plant that has many blooms on it.
- ✿ Stems should be at least 4 inches long if possible.
- ✿ Flowers should be uniform (same size) and free from insect injury or disease.
- ✿ Remember to label exhibits for those classes requiring labels.
- ✿ **No flowers from the ENDANGERED SPECIES LIST will be allowed.**
- ✿ Refer to <https://www.mass.gov/info-details/list-of-endangered-threatened-and-special-concern-species>.
- ✿ **No *Cannabis* products allowed.**

Premium Points: 8 - 7 - 6 - 5 - 4

- | | |
|---------------------------------|---|
| 1101 Aster - 5 blooms | 1107 Dahlia - 5 blooms |
| 1102 Bachelor Button - 5 blooms | 1108 Gladiolus - 3 spikes |
| 1103 Calendula - 5 stems | 1109 Lily - 5 stems |
| 1104 Carnation - 5 stems | 1110 Marigold - 5 blooms; large (African) |
| 1105 Coneflower - 5 blooms | 1111 Marigold - 5 blooms; single |
| 1106 Cosmo - 5 blooms | 1112 Marigold - 5 blooms; double |

DIVISION 11 - Flower (cont.)

1113	Petunia - 5 blooms; single	1118	Sunflower - 3 blooms
1114	Petunia - 5 blooms; double	1119	Zinnia - 5 blooms; large
1115	Rose - 1 bloom	1120	Zinnia - 5 blooms; small
1116	Salvia - 5 blooms	1121	Zinnia - 5 blooms; Mexican
1117	Snapdragon - 5 stems	1123	Other Flower not mentioned - 5 blooms; label kind; limit of 3 different entries

Indoor Plants - must be grown by the exhibitor

1130	African violet	1138	Potted Flowering plant - label kind
1131	Begonia	1139	Potted Foliage plant - label kind
1132	Cactus	1140	Potted Hanging plant - either indoor or outdoor; label kind
1133	Fern	1141	Potted Herb - single herb or collection; any variety; label kind
1134	Ivy	1142	Other Indoor Plant not mentioned - label kind; limit of 3 different entries
1135	Orchid		
1136	Succulent		
1137	Topiary		

Arrangements - use oasis in flower arrangements where possible.

Premium Points: 10 - 8 - 6 - 4 - 2

- 1145 "Coffee Break" - flower arrangement in a coffee mug.
- 1146 "Tea Time" - flower arrangement in a tea pot or tea cup.
- 1147 "Drift Away" - flower arrangement using driftwood.
- 1148 "Freedom Reigns" - flower arrangement in a container not intended for flowers.
- 1149 "Autumn's Here" - arrangement of dried flowers using fall colors; no synthetic flowers.
- 1150 "Grandpa's Farm" - arrangement of wild flowers.
- 1151 "A Tisket, A Tasket" - flower arrangement in a basket.
- 1152 "Blue and White" - flower arrangement in a blue and white container.
- 1153 "Animalmania" - flower arrangement in an animal shaped container.
- 1154 "April Showers" - flower arrangement in a watering can.
- 1155 "Play it Again" - flower arrangement in a recycled object.
- 1156 "Anything Goes" - flower arrangement in a creative unusual container.
- 1157 "Swan Lake" - floating flower arrangement; use your imagination.
- 1158 "Miniature Beauty" - flower arrangement not over 5 inches in any direction.
- 1159 "Wall Hanging" - arrangement of natural materials.



Outdoor Containers - must be planted and grown by the exhibitor

Premium Points: 10 - 8 - 6 - 4 - 2

- 1165 Dish Garden (must be rooted)
- 1166 Plant Terrarium (must be rooted)
- 1167 Container Garden - portable garden containing vegetables, flowers, and/or herbs
- 1168 Vertical Garden - garden containing vegetables, flowers, and/or herbs; use your imagination
- 1169 Window box - judged on creativity
- 1170 Fairy garden scene in a container under 18 inches - artificial and/or real materials
- 1171 Fairy garden scene in a container 18 inches or larger - artificial and/or real materials
- 1172 Garden in an unusual container under 2 gallons
- 1173 Garden in an unusual container 2 gallons or larger

DIVISION 12 - Canning

- ✿ Read Fair General Rule and Hall Exhibit General Rules.
- ✿ The product shown must be of the current year's production (August 2022 through July 2023) and made by the exhibitor.
- ✿ Jars must be identical; labeling must be uniform; include name of product; month and year preserved.
- ✿ The jars in each entry shall be in standard, clear, pint canning jars, except jellies and jams. Jellies and jams may be in pint jars or in standard jelly or jam jars.
- ✿ All products, **including jam and jelly, must be sealed by processing.**
- ✿ **No glass topped, bail rubber ring jars. Metal jar rings must be removed before showing.**

What judges evaluate:

- ✿ *Workmanship as shown by condition of exhibit*
- ✿ *Thoroughly clean, matching jars*
- ✿ *Preference for plain rather than fancy packs*
- ✿ *Jelly should be clear, good color, good consistency*
- ✿ *Jam should have good color, good consistency*
- ✿ *Quality - good quality, uniform size, good color*
- ✿ *Liquid - clear, no sediment, proper amount in jar; For maple syrup and honey judging criteria, refer to www.ams.usda.gov/grades-standards. Search for honey or maple syrup.*
- ✿ *Proper Headspace - ¼ inch for jams and jellies; ½ inch for fruits and tomatoes processed in boiling water; 1 to 1¼ inches for low acid foods processed in a pressure canner*

Premium Points: 8 - 7 - 6 - 5 - 4

Vegetables - 2 jars each

1201	Tomatoes	1209	Asparagus
1202	Beans - green snap	1210	Squash
1203	Beans - yellow snap	1211	Shell Beans
1204	Carrots	1212	Lima Beans
1205	Greens	1213	Tomato Juice
1206	Beets	1214	Mixed Vegetables
1207	Peas	1215	Other Vegetable not mentioned -
1208	Corn		indicate variety

Pickles and Relishes - 2 jars each

1216	Bread and Butter Pickles	1219	Dill Pickles
1217	Mixed Pickles	1220	Other Pickle not mentioned -
1218	Relish		indicate variety

Fruit - 2 jars each

1221	Peaches	1226	Plums
1222	Blueberries	1227	Cherries
1223	Pears	1228	Mixed Fruit
1224	Raspberries	1229	Other Fruit not mentioned -
1225	Blackberries		indicate variety



Jams, Jellies, Preserves, Etc. - 2 jars each of same variety; indicate variety on Entry Form; exhibit up to 3 different varieties in each class

1230	Jam - limit of 3 different varieties
1231	Jelly - limit of 3 different varieties
1232	Conserves, Preserves, Marmalade, Butter (non-dairy) - limit of 3 different varieties

DIVISION 12 - Canning (cont.)

Miscellaneous - 2 jars each

- 1234 Maple Syrup
- 1235 Tomato Sauce
- 1236 Apple Sauce
- 1237 Honey



Collections - 3 jars; one each of 3 varieties

Premium Points: 10 - 8 - 6 - 4 - 2

- | | |
|--|---|
| <ul style="list-style-type: none"> 1238 Vegetables 1239 Fruit 1240 Jams 1241 Jellies | <ul style="list-style-type: none"> 1242 Conserves, Preserves, Marmalade, Butter (non-dairy) 1243 Pickles 1244 Relishes |
|--|---|

Gift Baskets

Premium Points: 10 - 8 - 6 - 4 - 2

- 1251 Canning Gift Basket - in a basket, attractively arranged with clear wrap, tied at the top, include at least 1 jar of each 3 types of canned vegetables. Small items to compliment the basket are allowed. List the basket contents.
- 1252 Jams/Jellies Gift Basket - in a basket, attractively arranged with clear wrap, tied at the top, include at least 1 jar of each 3 types of canned jams or jellies. Small items to compliment the basket are allowed. List the basket contents.
- 1253 Other Canned Foods in a Gift Basket - in a basket, attractively arranged with clear wrap, tied at the top, include at least 1 jar of each 3 types of other canned foods not listed in the above gift baskets. Small items to compliment the basket are allowed. List the basket contents.



DIVISION 13 - Food

- ✿ Read [Fair General Rules](#) and [Hall Exhibit General Rules](#).
- ✿ **No package mix accepted.**
- ✿ All entries must be prepared separately, mixed, and made by each exhibitor.
- ✿ All cakes and breads must be taken out of the pan.
- ✿ **All entries must be on a non-breakable plate and protected with a clear cover or clear plastic wrap.**
- ✿ All entries must be accompanied by a recipe (only exception is the *Fair Recipe*). Recipe should include both the ingredients and the complete directions neatly printed or typed.

Premium Points: 8 - 7 - 6 - 5 - 4

- 1301 Restricted Diet Baked Product - e.g. made with gluten free, sugar free, fat free, salt free ingredients, etc.
- 1302 Nutritious Snack
- 1303 Food Fun - food sculpture or food made using your imagination
- 1304 Packed School Lunch - include menu for lunch and list menu for other meals to show a balanced diet for the day.
- 1305 Attractive Place Setting - for a special occasion with menu; 2 feet by 2½ feet space
- 1306 6 Rolled Cookies - must be rolled and cut
- 1307 6 Dropped Cookies - includes ball cookies such as snicker doodles, peanut butter, etc.
- 1308 6 Dropped Cookies - chocolate chip
- 1309 6 Molded Cookies - made with cookie press; all the same shape
- 1310 6 Other Cookies not mentioned above - indicate kind
- 1311 6 Brownies
- 1312 6 Muffins - with or without wrappers
- 1313 6 Donuts
- 1314 6 Cupcakes - with or without wrappers
- 1315 6 Baking Powder Biscuits
- 1316 6 Candy Pieces
- 1317 6 Bar Cookies



Premium Points: 10 - 8 - 6 - 4 - 2

- 1325 Non-White Yeast Bread - at least 1/3 cup non-white flour
- 1326 White Yeast Bread - at least 1/3 cup white flour
- 1327 Fancy Yeast Bread
- 1328 Yeast Rolls
- 1329 Coffee Cake - without yeast
- 1330 Coffee Cake - with yeast
- 1331 Quick Bread - without yeast
- 1332 Two Crust Pie - indicate type; include crust recipe
- 1333 Cake - pound; frosted or unfrosted; include frosting recipe if used
- 1334 Cake - spice; frosted; include frosting recipe
- 1335 Cake - light; frosted; include frosting recipe
- 1336 Cake - chocolate; frosted; include frosting recipe
- 1337 Cake - sponge, angel, chiffon; no frosting
- 1338 Other Food not mentioned above - indicate kind
- 1339 Decorated Cake - Include recipe for cake and frosting; judge will cut the cake; quality to be considered. Awards will be presented to the Junior and the Senior exhibitors with the best overall decorated cakes.
- 1345 Gift in a Jar - a quart jar of dried cookie mix showing layers of dry goods in an attractive arrangement. Decorate the jar for an occasion. Attach ingredients and baking directions.



DIVISION 13 - Food (cont.)

1350 Junior Fair Recipe Contest

Premium Points: 10 - 8 - 6 - 4 - 2

WACKY CHOCOLATE CAKE

Preheat oven to 350°F.

Dry Ingredients

3 cups flour
2 cups sugar
2 tsp. baking soda
1 tsp. salt
 $\frac{1}{3}$ cup unsweetened cocoa

Wet Ingredients

$\frac{3}{4}$ cup corn oil (glass measuring cup)
2 Tbsp. cider vinegar
2 tsp. vanilla
2 cups water

Chocolate Butter Frosting Ingredients

$\frac{1}{4}$ cup butter
 $\frac{1}{3}$ cup milk
1 tsp. vanilla
1 - 12oz. pkg. semi-sweet chocolates
 $2\frac{1}{4}$ cups Confectioner's sugar

Cake Directions

In a large bowl:

Mix together flour, sugar, baking soda, salt and cocoa.

In a smaller bowl:

Add cider vinegar and vanilla to the corn oil.

Pour this mixture over the dry ingredients.

Add water.

Mix vigorously.

Bake in a 9x13 pan for 50 minutes or until an inserted toothpick comes out clean.

Remove from oven and cool.

Frosting Directions

In a sauce pan:

Combine milk and butter.

Bring to a boil over medium heat, stirring constantly.

Add the semi-sweet chocolates and vanilla.

Stir until smooth.

Mix or beat in the Confectioner's sugar until thick enough to spread on the cake.

Spread on the cooled cake.

The origin of the Wacky Cake is murky, but most sources link it to the Depression or World War II eras when certain foods were scarce. With its notable absence of eggs, butter or milk, both time periods make sense. Recipes vary, but they typically contain cocoa powder, oil, vanilla, vinegar and water.

DIVISION 13 - Food (cont.)

1351 Senior Fair Recipe Contest

Premium Points: 10 - 8 - 6 - 4 - 2

HOLIDAY SPICE CAKE

Preheat oven to 350°F. Grease and flour a fluted tubular cake (Bundt) pan.

Ingredients

Dry

2 cups all-purpose flour
1 cup sugar
 $\frac{3}{4}$ cup packed brown sugar
1 cup powdered sugar
3 tsps. baking powder
 $\frac{1}{4}$ tsp. baking soda
 $\frac{1}{2}$ tsp. salt
1 cup plain breadcrumbs

Spices

1 tsp. ground cinnamon
 $\frac{1}{2}$ tsp. ground cloves
 $\frac{1}{2}$ tsp. ground ginger
 $\frac{1}{2}$ tsp. ground nutmeg

Fruit

1 cup raisins
1 cup dried sweetened
cranberries
1 orange
2 lemons
2 cups peeled/cored/chopped
apples

Wet

$\frac{3}{4}$ cup milk
3 large eggs
 $\frac{3}{4}$ cup vegetable oil
2/3 cup molasses

Directions

Cake

Mix bread crumbs and milk in a small bowl and set aside.

Lightly coat the raisins and cranberries with 1 tablespoon flour in a small bowl.

Combine flour, baking powder, salt and spices together in a small bowl and set aside.

Juice the orange and 1 lemon in a small bowl.

Lightly beat the eggs in a large bowl.

Add oil, orange / lemon juice, brown sugar and molasses to the eggs and mix well.

Add the bread crumb / milk mixture.

Blend the mixture thoroughly until smooth.

Slowly add the flour mixture and stir until well blended.

Gently fold in the dried fruit and apples.

Pour into the cake pan.

Bake approximately 1 hour until a toothpick inserted into the cake comes out clean.

Cool cake on a rack approximately 20 minutes.

Turn out onto a large paper plate or disposable platter.

Glaze

Juice the 2nd lemon in a small bowl.

Add the powdered sugar (up to 1 cup) and mix until smooth.

Drizzle the glaze over the cooled cake.

DIVISION 14 - Clothing

- ✿ Read [Fair General Rules](#) and [Hall Exhibit General Rules](#).
- ✿ **ALL EXHIBITORS ARE ENCOURAGED TO PARTICIPATE IN THE FASHION REVUE.**
See Fashion Revue information at end of this Division.
- ✿ **Items must be clean!**

Danish Points: 12 - 9 - 6

1401	First year sewer - any garment	1406	Pajamas or Nightgown	1413	Male's Trousers
1402	Apron	1407	Outdoor Gear (e.g. backpack) limit of 3 different entries	1414	Jump Suit
1403	Accessories - limit of 3 different entries	1408	Jumper	1415	Quilted Garment
1404	Shorts	1409	Slacks	1416	Jacket
1405	Sweatshirt	1410	Skirt	1417	Vest
		1411	Blouse	1418	Washable Dress
		1412	Male's Shirt	1419	Non-washable Dress

Danish Points: 15 - 12 - 8

1420	Party Dress	1422	Suit - Pants and Jacket	1424	Suit - Skirt and Jacket
1421	Prom Gown	1423	Coat or Cloak		

Danish Points: 12 - 9 - 6

- 1425 Made over article of clothing (an original garment that has been altered or reconstructed). Include a brief description attached to the garment explaining what it was and what changes were made.
- 1426 Anything But Fabric Outfit - create an outfit using anything but fabric. Use duct tape, plastic bags, paper, soda boxes, newspaper, magazines, snack bags, tinsel, caution tape, recycled materials, etc. to create a one of a kind design.
- 1427 Smart Shop Outfit - refer to "Class 1437: *Smart Shop Fashion Revue*" for details.
- 1428 Any other wearable item not mentioned - limit of different 3 items; include a brief description
- 1429 Equipped Sewing Container - include list of materials and their use

Danish Points: 25 - 20 - 15

- 1430 Coordinated wardrobe of 3 to 5 garments - include a brief description of the garments

Fashion Revue at 3:00 p.m.

All Junior and Senior Fashion Revue participants will be awarded 10 Premium Points. Awards will be presented to the best overall Junior participant and the best overall Senior participant. Cloverbuds may enter the Fashion Revue.

- 1435 Exhibitor Garment Revue - Experience the excitement of modeling a garment you made. Submit a description of your garment or outfit as written on the pattern envelope to the Fair Secretary by Friday evening, July 21st.
- 1436 Anything But Fabric Outfit Revue - Submit a description of your outfit (of what non-fabrics it is made and how it was constructed) to the Fair Secretary by Friday evening, July 21st.
- 1437 Smart Shop Fashion Revue - the purpose of this class is to encourage wise decision making as consumers of clothing in areas of price, garment construction, understanding of fiber content, cost comparison, garment care and its cost, and appropriateness for model.

DIVISION 14 - Clothing (cont.)

Fashion Revue (continued)

General Guidelines for 1437 Smart Shop Fashion:

- ✿ Shop, select, and purchase one or more garment(s), then combine it with accessories or other garment(s) from your current wardrobe to create a coordinated outfit.
- ✿ The maximum amount that can be spent for garment(s) purchased for this program is \$ 50.00.
- ✿ Smart Shop Fashions must have been purchased since October 1, 2022.
- ✿ Garment make-overs can also be showcased in the program as long as the date of purchase was after October 1, 2022 and does not exceed the \$ 50.00 limit.

Your "exhibit" must include (but is not limited to) the following information in a form of your choosing that is also suitable for review by judges during a fashion show (such as type written pages, a mini scrapbook, a poster, etc.):

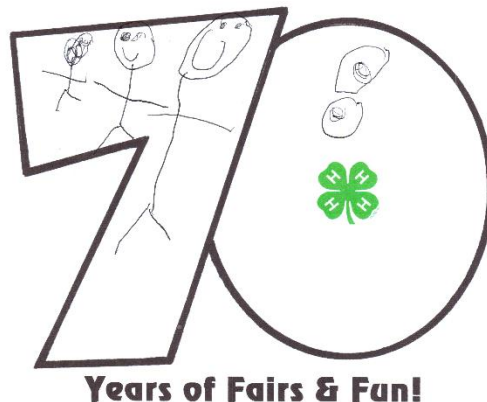
- ✿ Briefly describe the garment/outfit you purchased that you will be modeling.
- ✿ How does this purchase fit within your wardrobe goals?
- ✿ How does this garment enhance your skin tone and hair coloring?
- ✿ What specific fashion details do you like about this ensemble?
- ✿ Where do you plan to wear this outfit?
- ✿ Describe the comparison shopping that you did and the type of store where it was purchased (thrift, specialty, consignment, department, online, etc.).
- ✿ Cost of each garment, its fiber content, and care instructions.
- ✿ Were any of your accessories purchased within the stated budget?
- ✿ Describe the accessories you plan to wear with this outfit whether part of the budget or not.

Submit to the Fair Secretary, a narration that can be used on stage for the Fashion Revue. Include Information about you, your garment or outfit, your 4-H experiences, and your Smart Shop Fashion adventure.

Lead Line and Wool Competition

See competition information in the **Sheep Division** on page 20.

Illustration by Samuel D.
Age 6



DIVISION 15 - Knitting

- ✿ Read [Fair General Rules](#) and [Hall Exhibit General Rules](#).
- ✿ **Items must be clean!**



Hand Knitting

Danish Points			Danish Points		
1501	First year knitter - any article	12 - 9 - 6	1512	Scarf and Hat Set	15 - 12 - 9
1502	Sweater - slip on	15 - 12 - 9	1513	Afghan - approx. 4' x 5'	18 - 15 - 11
1503	Sweater - cardigan	15 - 12 - 9	1514	Baby article	10 - 8 - 6
1504	Sweater Set - coordinated	18 - 15 - 11	1515	Stole	10 - 8 - 6
1505	Slipper Socks	15 - 12 - 9	1516	Toy	10 - 8 - 6
1506	Poncho or Cape	15 - 12 - 9	1517	Other Knitted Item not mentioned - include description; limit of 3 different entries	10 - 8 - 6
1507	Mittens - 2 needles	15 - 12 - 9			
1508	Mittens - 4 needles	15 - 12 - 9	1518	Coaster	7 - 5 - 3
1509	Vest	15 - 12 - 9	1519	Lap Blanket	10 - 8 - 6
1510	Scarf	10 - 8 - 6			
1511	Hat	10 - 8 - 6			

Loom Knitting

Danish Points			Danish Points		
1525	First year knitter - any article	12 - 9 - 6	1536	Scarf and Hat Set	15 - 12 - 9
1526	Sweater - slip on	15 - 12 - 9	1537	Afghan - approx. 4' x 5'	18 - 15 - 11
1527	Sweater - cardigan	15 - 12 - 9	1538	Baby article	10 - 8 - 6
1528	Sweater Set - coordinated	18 - 15 - 11	1539	Stole	10 - 8 - 6
1529	Slipper Socks	15 - 12 - 9	1540	Toy	10 - 8 - 6
1530	Poncho or Cape	15 - 12 - 9	1541	Other Knitted Item not mentioned - include description; limit of 3 different entries	10 - 8 - 6
1531	Mittens - 2 needles	15 - 12 - 9			
1532	Mittens - 4 needles	15 - 12 - 9	1542	Coaster	7 - 5 - 3
1533	Vest	15 - 12 - 9	1543	Lap Blanket	10 - 8 - 6
1534	Scarf	10 - 8 - 6			
1535	Hat	10 - 8 - 6			

Machine Knitting

Danish Points			Danish Points		
1550	First year knitter - any article	12 - 9 - 6	1561	Scarf and Hat Set	15 - 12 - 9
1551	Sweater - slip on	15 - 12 - 9	1562	Afghan - approx. 4' x 5'	18 - 15 - 11
1552	Sweater - cardigan	15 - 12 - 9	1563	Baby article	10 - 8 - 6
1553	Sweater Set - coordinated	18 - 15 - 11	1564	Stole	10 - 8 - 6
1554	Slipper Socks	15 - 12 - 9	1565	Toy	10 - 8 - 6
1555	Poncho or Cape	15 - 12 - 9	1566	Other Knitted Item not mentioned - include description; limit of 3 different entries	10 - 8 - 6
1556	Mittens - 2 needles	15 - 12 - 9			
1557	Mittens - 4 needles	15 - 12 - 9	1567	Coaster	7 - 5 - 3
1558	Vest	15 - 12 - 9	1568	Lap Blanket	10 - 8 - 6
1559	Scarf	10 - 8 - 6			
1560	Hat	10 - 8 - 6			

DIVISION 16 - Crocheting

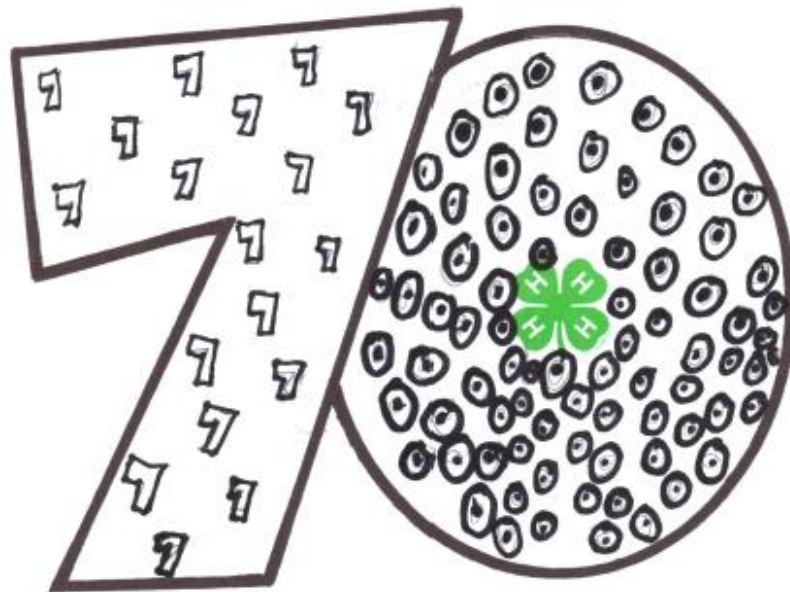
- ☘ Read Fair General Rules and Hall Exhibit General Rules.
- ☘ **Items must be clean!**

Danish Points

1601	First year crocheter - any item	8 - 6 - 4
1602	Handbag	8 - 6 - 4
1603	Belt	8 - 6 - 4
1604	Hat	8 - 6 - 4
1605	Vest	8 - 6 - 4
1606	Scarf	8 - 6 - 4
1607	Baby Article	8 - 6 - 4
1608	Shell	8 - 6 - 4
1609	Toy	8 - 6 - 4
1610	Cape or Poncho	12 - 9 - 6
1611	Sweater	12 - 9 - 6
1612	Afghan - approx. 4' x 5'	15 - 12 - 8
1613	Other Crocheted Item	8 - 6 - 4

not mentioned above –
limit of 3 different entries;
include a description





Years of Fairs & Fun!

Illustration by: James K.
Age 14

DIVISION 16A - Quilt

- ✿ Read [Fair General Rules](#) and [Hall Exhibit General Rules](#).
- ✿ **Items must be clean!**
- ✿ **Commercial Quilting is not allowed except in class 1699.**
- ✿ Include a short description to help the judges understand the level of difficulty and the process used.

Danish Points: 18 - 13 - 8

Hand Quilting

- 1651 Pieced Miniature - less than 20" x 20"
- 1652 Appliquéd Miniature - less than 20" x 20"
- 1653 Pieced Wall Hanging - larger than 20";
up to 42" x 42"
- 1654 Appliquéd Wall Hanging - larger than 20";
up to 42" x 42"
- 1655 Pieced Crib - lap size
- 1656 Appliquéd Crib - lap size
- 1657 Pieced Twin
- 1658 Appliquéd Twin
- 1659 Pieced Double, Queen, or King Size
- 1660 Appliquéd Double, Queen, or King Size
- 1661 Whole Cloth
- 1662 Hand Quilt - Group / Club / Class;
assembled by youth
- 1663 Hand Quilt - Group / Club / Class;
assembled by youth and adult
- 1664 Other Hand Quilted Item not mentioned -
limit of 3 different entries; include description

Machine Quilting

- 1667 Pieced Miniature - less than 20" x 20"
- 1668 Appliquéd Miniature - less than 20" x 20"
- 1669 Pieced Wall Hanging - larger than 20";
up to 42" x 42"
- 1670 Appliquéd Wall Hanging - larger than 20";
up to 42" x 42"
- 1671 Pieced Crib - lap size
- 1672 Appliquéd Crib - lap size
- 1673 Pieced Twin
- 1674 Appliquéd Twin
- 1675 Pieced Double, Queen, or King Size
- 1676 Appliquéd Double, Queen, or King Size
- 1677 Whole Cloth
- 1678 Machine Quilt - Group / Club / Class;
assembled by youth
- 1679 Machine Quilt - Group / Club / Class;
assembled by youth and adult
- 1680 Other Machine Quilted Item not mentioned;
limit of 3 different entries; include a
description

Tie Quilting

- 1683 Pieced Miniature - less than 20" x 20"
- 1684 Appliquéd Miniature - less than 20" x 20"
- 1685 Pieced Wall Hanging - larger than 20";
up to 42" x 42"
- 1686 Appliquéd Wall Hanging - larger than 20";
up to 42" x 42"
- 1687 Pieced Crib - lap size
- 1688 Appliquéd Crib - lap size
- 1689 Pieced Twin
- 1690 Appliquéd Twin
- 1691 Pieced Double, Queen, or King Size
- 1692 Appliquéd Double, Queen, or King Size
- 1693 Whole Cloth
- 1694 Tie Quilt - Group / Club / Class;
assembled by youth
- 1695 Tie Quilt - Group / Club / Class;
assembled by youth and adult
- 1696 Other Tie Quilted Item not mentioned -
limit of 3 different entries; include a
description

Kit Quilting

- 1697 Kit Created Work - entry must credit the kit
used; include a description
- 1698 Custom Designed Block - entry must be
custom and not from a pattern

Commerical Quilting

- 1699 Professionally Finished / Longarm -
entry must credit the collaborative
source



DIVISION 17 - Needle Craft

- ✿ Read [Fair General Rules](#) and [Hall Exhibit General Rules](#).
- ✿ **Items must be clean, finished and ready to be displayed or used.**

Danish Points: 12 - 9 - 6
15 - 12 - 9 for Classes 1731-1734

1701	Candle Wicking	1723	Needlepoint - large plastic
1702	Latch Hook - original design	1724	Needlepoint - small canvas or material
1703	Latch Hook - prepared design	1725	Needlepoint - large canvas or material
1704	Fringed Article - 1st year exhibitor only	1726	Patchwork Article
1705	Fabric Stuffed Toy	1727	Doll Clothes
1706	Embroidery	1728	Stitchery
1707	Crewel	1729	Flag or Banner - stitched
1708	Basket Weave Stitch	1730	Counted Cross Stitch Pillow
1709	Smocking	1731	Counted Cross Stitch Picture - framed by exhibitor
1710	Decorated Apron	1732	Counted Cross Stitch Picture - framed professionally
1711	Pillowcase	1733	Other Counted Cross Stitch - include description; e.g. towel, ornament, etc.
1712	Single Pillow - handmade	1734	Cross Stitch on Waste Canvas
1713	Single Pillow - machine made	1735	Other Needlecraft Item not mentioned - include description; limit 3 entries
1714	Needle Felting	1736	Coaster
1715	Pair of Pillows - handmade	1737	Lap Blanket
1716	Pair of Pillows - machine made		
1717	Quilted Article - by machine		
1718	Quilted Article - by hand		
1719	Swedish Weaving		
1720	Pin Cushion		
1721	Tote Bag		
1722	Needlepoint - small plastic		



DIVISION 17A - Machine Embroidery

- ✿ Read [Fair General Rules](#) and [Hall Exhibit General Rules](#).
- ✿ **Items must be clean!**

Danish Points: 12 - 9 - 6

1750	Preprogrammed Design	1752	Original Digitized Design
1751	Modified Design - include a brief description of how design was modified; software used, etc.	1753	Multiple Design Combination

DIVISION 18 - Handmade Craft

- ☘ Read Fair General Rules and Hall Exhibit General Rules.
- ☘ A short description should be included to help the judges understand the level of difficulty of the craft and the process used.
- ☘ Quality of craft is important - neat, finished edges, glue not visible, ready for use or display. Creativity is encouraged.
- ☘ **No kits allowed. No paint by numbers.**
- ☘ **Attach entry tag securely to exhibit.**

Danish Points: 8 - 6 - 4

- | | |
|---|--|
| <p>1801 Acrylic Painting on Cloth</p> <p>1802 Article on Seasonal Theme - fall theme</p> <p>1803 Article on Season Theme - winter theme</p> <p>1804 Article on Season Theme - other theme</p> <p>1805 Bookmark</p> <p>1806 Bouquet of Handmade Flowers</p> <p>1807 Candle - handcrafted</p> <p>1808 Casting (plastic, plaster, green ware, resin) - precast</p> <p>1809 Casting (plastic, plaster, green ware, resin) - original</p> <p>1810 Clay - hand built</p> <p>1811 Clay - Potter's wheel</p> <p>1812 Decorated Metal Ware - stencil, tole, etc.</p> <p>1813 Decorated Shirt - no stitching or needlework</p> <p>1814 Decoupage</p> <p>1815 Doll - apple, cornhusk, etc.</p> <p>1816 Item using Natural/Dried Materials</p> <p>1817 Etching - metal or glass</p> <p>1818 Decorated Egg - styrofoam, wood, shell</p> <p>1819 Flag or Banner - not stitched</p> <p>1820 Fleece or Felt - non-sewn item</p> <p>1821 Glista Glass - foil picture</p> <p>1822 Jewelry - handmade</p> <p>1823 Liquid Embroidery</p> <p>1824 Leather Item</p> <p>1825 Macramé</p> <p>1826 Magnet</p> <p>1827 Memory Book</p> <p>1828 Metal Punch</p> <p>1829 Mobile - bring something to hang it on</p> <p>1830 Origami - paper folding</p> <p>1831 Papier mache'</p> <p>1832 Recycle Craft - paper, glass, tin, etc.</p> <p>1833 Rock Creature</p> <p>1834 Rug Craft</p> | <p>1835 Sand Terrarium / Sand Art</p> <p>1836 Shadow Box</p> <p>1837 Scherenschnitte - paper cutting</p> <p>1838 Silhouette</p> <p>1839 Slate Painting</p> <p>1840 Stained Glass Article</p> <p>1841 Stenciled Article</p> <p>1842 Stick Craft - toothpicks, clothespins, popsicle sticks, etc.</p> <p>1843 Symmography - string pictures</p> <p>1844 Weaving - reed</p> <p>1845 Weaving - loom</p> <p>1846 Wooden Item - purchased and decorated</p> <p>1847 Woven Item other than loom or reed</p> <p>1848 Wreath - straw, grapevine, etc.</p> <p>1849 Fun Foam - Cloverbuds and Juniors only</p> <p>1850 Card - embossed, cut and pierced, stenciled, stamped, etc.</p> <p>1851 Other Hand-Made Craft - only items not in a class listed above; list item on entry form; limit 3 different entries</p> |
|---|--|

Danish Points: 15 - 12 - 8

Scarecrow - must be free standing; maximum 6 feet tall

- | | |
|---|--|
| <p>1860 Scarecrow constructed by an individual</p> <p>1861 Scarecrow constructed by a Club, Group or Family</p> | |
|---|--|



Division 19 - Handmade Craft Display

- ✿ Read Fair General Rules and Hall Exhibit General Rules.
- ✿ Each display will be judged on quality, originally, and display presentation.
- ✿ Each display must not exceed 2½ feet in depth.
- ✿ Exhibitor may supply a backdrop for the display, if needed.
- ✿ An exhibitor may enter up to 3 different displays.

Danish Points: 15 - 12 - 8

- 1901 Display of 5 or more items of one type of hand-made craft
- 1902 Display of a craft item done in 3 or more different techniques (e.g. T-shirts - painted, needlework added, tie-dyed)

Division 19A - Hobby Display

- ✿ Read Fair General Rules and Hall Exhibit General Rules.
- ✿ Each display will be judged on quality, originally, and display presentation.
- ✿ Each display must not exceed 2½ feet in depth.
- ✿ Exhibitor may supply a backdrop for the display, if needed.
- ✿ An exhibitor may enter up to 3 different displays.
- ✿ **Required:** on a small card, explain how or why you chose this hobby, where the items were collected, and any other pertinent information.

Danish Points: 10 - 8 - 6

- 1925 Collection of at least 10 different items of one type of a hobby theme (e.g. model cars, stamp collection)

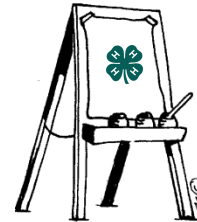


Illustration by Hunter W.
Age 7

DIVISION 20 - 4-H Poster Contest

- ☘ Read Fair General Rules and Hall Exhibit General Rules.
- ☘ Only one entry per class.
- ☘ Minimum size of poster is 14" x 22".
- ☘ Copyrighted characters are not allowed (i.e. Snoopy, Disney, or cartoon characters, etc.).
- ☘ Include name, address, and age of exhibitor on back of poster - **not on front**.

SCORE SHEET	
Artwork - 40 points	Message (Idea) - 60 points
<p style="text-align: center;">Simple and neat Center of interest Unity - artwork ties together Balance - well planned; no large empty spaces; not too cluttered General artwork Good color combination Lettering easy to read 4-H Clover included</p>	<p style="text-align: center;">Eye catching Purpose - tells you something Simple and brief</p>



Danish Points: 8 - 6 - 4

2001 General 4-H
2002 Environmental

2003 Social Issues
2004 Volunteerism

2005 Health
2006 Open Theme



4-H Pledge



I Pledge...

*My HEAD to clearer thinking,
 My HEART to greater loyalty,
 My HANDS to larger service, and
 My HEALTH for better living,
 for My Club, My Community, My Country, and My World.*

The pledge tells what 4-H is all about. 4-H has as its goal the four-fold development of youth: Head, Heart, Hands, and Health. The pledge was adopted by the delegates to the 1927 National 4-H Club Camp in Washington, D.C. State club leaders voted for and adopted the pledge for universal use, The phrase "and my world" was added in 1973. The saying of the pledge has a prominent place in 4-H activities at regular 4-H meetings and other club events.

DIVISION 21 - Art Show



- ✿ Read Fair General Rules and Hall Exhibit General Rules.
- ✿ **One entry per class.**
- ✿ **Presentation is an important part of your artwork.**
- ✿ **Artwork must be mounted, matted, and/or framed on a rigid backing.**
- ✿ **GLASS IS NOT ALLOWED.** Plexiglas or plastic is acceptable. The 4-H Fair Association will not be responsible for damage.
- ✿ **No paint by numbers will be accepted.**
- ✿ Artwork should not be of copyrighted characters (e.g. Snoopy, Disney characters, etc.)
- ✿ Paintings may be signed. Art exhibitors are encouraged to title their exhibits.
- ✿ Sculptures must be freestanding.
- ✿ "Still life" means a picture of lifeless object(s) (e.g. vase of flowers, bird's nest, food, books, personal effects, household items, etc.)
- ✿ **For the Judge** - Please include a brief history of how long you have been doing this type of art, if classes were taken, or if you are self-taught, etc. Attach information to artwork on a small index card.

Danish Points: 10 - 8 - 6

- | | |
|--|---|
| 2101 Acrylic Painting - abstract | 2123 Pencil Drawing - black and white |
| 2102 Acrylic Painting - animal | 2124 Pencil Drawing - color |
| 2103 Acrylic Painting - landscape | 2125 Finger Painting - Cloverbuds and Juniors |
| 2104 Acrylic Painting - seascape | 2126 Crayon Drawing - Cloverbuds and Juniors |
| 2105 Acrylic Painting - portrait | 2127 Marker Drawing - Cloverbuds and Juniors |
| 2106 Acrylic Painting - still life | 2128 Block Print |
| 2107 Oil Painting - abstract | 2129 Calligraphy |
| 2108 Oil Painting - animal | 2130 Collage |
| 2109 Oil Painting - landscape | 2131 Illustration - include writing with image |
| 2110 Oil Painting - seascape | 2132 Mixed Media - include media description |
| 2111 Oil Painting - portrait | 2133 Fluid Art - paint pouring |
| 2112 Oil Painting - still life | 2140 Sculpture - ceramic |
| 2113 Water Color Painting - abstract | 2141 Sculpture - metal |
| 2114 Water Color Painting - animal | 2142 Sculpture - plaster |
| 2115 Water Color Painting - landscape | 2143 Sculpture - wood |
| 2116 Water Color Painting - seascape | 2144 Sculpture - other sculpture not mentioned
include a description |
| 2117 Water Color Painting - portrait | 2145 Wood burning |
| 2118 Water Color Painting - still life | 2146 Wood carving |
| 2119 Charcoal Drawing | 2150 Other Art Entry not mentioned - limit of 3
different entries; include description |
| 2120 Pastel Drawing | |
| 2121 Ink Drawing - black and white | |
| 2122 Ink Drawing - color | |



4-H Colors

Green and White

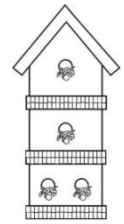
***Green** symbolizes springtime,
life, and youth,*

***White** symbolizes purity and high ideals.*



DIVISION 22 - Handicraft

☘ Read Fair General Rules and Hall Exhibit General Rules.

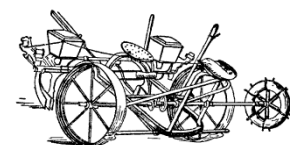


Danish Points: 10 - 8 - 6 for Classes 2201 - 2217, 2226, 2230, 2234 - 2258
18 - 15 - 11 for Classes 2218 - 2225, 2227 - 2229, 2231 - 2233

2201	Bookcase	2231	Flying Model Airplane (non-plastic) - scale
2202	Bread Box	2232	Flying Model Airplane (non-plastic) - no scale
2203	Bird Feeder	2233	Model Rocketry - on a small card, describe how it was made and how it functions
2204	Bird House	2234	Refinished Furniture - on a small card, explain the refinishing process; include a "before" picture, if available.
2205	Foot Stool	2235	Artificial Lure
2206	Hand Made Sign	2236	Hand Tied Fly
2207	Wooden Toy	2237	Beginner Basketry - coiled
2208	Rack - gun, fishing pole, bat, etc.	2238	Beginner Basketry - combination of materials
2209	Knick Knack Shelf	2239	Beginner Basketry - miniature
2210	Knife Holder	2240	Beginner Basketry - Nantucket, small
2211	Lawn Ornament	2241	Beginner Basketry - Nantucket, medium
2212	Tie Rack	2242	Beginner Basketry - Nantucket, large
2213	Tool Box	2243	Beginner Basketry - oriental design
2214	Homemade Equipment for Animals - include a brief description	2244	Beginner Basketry - ribbed
2215	Pre-cut Wooden Item - to be judged on assembly and finish	2245	Beginner Basketry - round reed
2216	Miniature Furniture	2246	Beginner Basketry - splint
2217	Small Piece of Furniture	2247	Beginner Basketry - unusual; does not fit into a category listed above
2218	Large Piece of Furniture	2248	Advanced Basketry - coiled
2219	End Table	2249	Advanced Basketry - combination of materials
2220	Coffee Table	2250	Advanced Basketry - miniature
2221	Chair	2251	Advanced Basketry - Nantucket, small
2222	Band Saw box	2252	Advanced Basketry - Nantucket, medium
2223	Wood Turned box	2253	Advanced Basketry - oriental design
2224	Wooden Jewelry box	2254	Advanced Basketry - ribbed
2225	Wooden Clock	2255	Advanced Basketry - round reed
2226	Other Wooden Item not mentioned - limit of 3 different entries; include a brief description	2256	Advanced Basketry - splint
2227	Wood Turning Faceplate - bowl, plate, etc.	2257	Advanced Basketry - unusual; does not fit into a category listed above
2228	Wood Turning Spindle - candlestick holder, furniture spindle, etc.	2258	Other Handicraft Item not mentioned - limit of 3 different entries; include a brief description
2229	Miniature Room Setting - built from scratch		
2230	Other Metal Item not mentioned - include a brief description		

DIVISION 23 - Agricultural Mechanics

☘ Read Fair General Rules and Hall Exhibit General Rules.
 ☘ A piece of agricultural equipment made, repaired, or rebuilt.



Danish Points: 15 - 12 - 8

2350	Electrical	2354	Sheet Metal
2351	Mechanical	2355	Other Mechanical Item not mentioned - include a brief description
2352	Wooden		
2353	Welded		

DIVISION 24 - Graphic Art

☘ Read Fair General Rules and Hall Exhibit General Rules.

Danish Points: 8 - 6 - 4

- 2401 Single Color - sample or collection of work using only one color
- 2402 Multiple Color - sample or collection of work using more than one color
- 2403 Architectural Drafting
- 2404 Computer Drafting
- 2405 Electrical Drafting
- 2406 Mechanical Drafting
- 2407 Computer Graphics with a 4-H Theme

- 2409 Advertising Design - deals with creating visual artwork (i.e. magazine and newspaper ads, infographics, display ads, direct mail/personal ads, social media ads, email templates, video ads, websites/blogs and other materials promoting products or services).
- 2410 Corporate Design – used to define brand through the artistic representation (i.e. logo, colors, modern typography, quality, branding and corporate culture).
- 2411 Art and Illustration – skills in this category are unique styles, creativity, communication, drawing, IT skills and branding.
- 2412 Environmental Design - a broad type of design that connects people to places and explains a story through various elements like colors, patterns, typography, materials, etc. Often used in professional disciplines such as landscape, interior, architectural and industrial design. Skills include a strong visual sense, communication skills, signage printing, office branding, exhibition/exhibit design and blueprint/digital design.
- 2413 Packaging Design - used as a marketing tool on a regular basis to grab customers' attention quickly. Must have knowledge of industrial design, branding, current trends, illustrations and manufacturing (i.e. box and paper, bottle, bag, can/container, plastic, glass and metals).
- 2414 Publication Design - deals with books, magazines, annual reports, directories, newspapers, journals, comics and product catalogs. Crucial skills to be familiar with are typography, design and layout, illustrations, infographic and color management. An understanding of publication types and messages will help express the theme.
- 2415 UI Design / User Interface Design - skills of UI/UX principles, responsive web design, minimalist design, interface elements, HTML/CSS/JavaScript, color/brightness/contrast and brand consistency.
- 2416 Motion Design - a process of designing elements like typography, imagery, audio, video or animation that are in motion. Used in online media, television, website and other sectors. Communicates with the viewer and expresses the depth of the story in a compelling way (i.e. advertisements, animated logos/text, film title design, presentations, websites and banners, video games and GIFs).
- 2417 Website Design - deals with the web layout, images, colors, textual elements and many more to achieve the best user experience. Skills of visual design, print design, HTML/CSS, color theory and design software.
- 2418 Vehicle Wrap Design - uses information along with some technical things for inspiration (i.e. sports cars, pickup trucks, vans/mini-vans, sports utility vehicles, sedan, coupe, etc.).
- 2419 Stationery Design - used for branding throughout an organization (i.e. writing equipment, envelope, business card, postcard, letterhead).
- 2420 Book Cover or Mockup Design - “gateway to the book’s soul”; helps to give the finishing touch to the actual content (i.e. notebook, open book, hardcover open book, square book, landscape book, stacked book).



DIVISION 25 - Photography

- ✿ Read [Fair General Rules](#) and [Hall Exhibit General Rules](#).
- ✿ **All photographs must be 5 inches by 7 inches and securely matted to 8 inches by 10 inches** unless otherwise noted.
- ✿ Please note that matting is judged - your choice of color. Overall presentation is considered.
- ✿ No hangers or frames of any kind are allowed.
- ✿ No cardboard or scotch taped items are allowed.
- ✿ No glass or plexiglass are allowed.
- ✿ No flush mounting allowed.
- ✿ “Still life” means a picture of **lifeless** object(s) (e.g. vase of flowers, bird’s nest, food, books, personal effects, household items, etc.)
- ✿ Any exhibit not complying with these specifications will be disqualified.
- ✿ The 4-H Fair Association will not be responsible for damage.
- ✿ All edited photographs must be entered in the *Photograph Editing Class 2574*.

Danish Points: 5 - 4 - 3

Danish Points: 5 - 4 - 3

Black and White Photography

Color Photography

- 2501 Abstract
- 2502 Action
- 2503 Agriculture - anything related to farming or gardening
- 2504 Architecture
- 2505 Flower
- 2506 Historical - identify with a label
- 2507 Photojournalism - news / sports
- 2508 People
- 2509 Person or People with Animal(s)
- 2510 Pet(s) - domesticated animal(s)
- 2511 Portrait
- 2512 Scenery/Landscape
- 2513 Selfie
- 2514 Still Life
- 2515 Sunrise/Sunset
- 2516 Underwater
- 2517 Waterscape/Seascape
- 2518 Wildlife - any animal in nature; including birds, insects, reptiles, mammals, etc.
- 2519 Lightning/Fireworks/Night Display
- 2525 Other photograph not mentioned - limit of 3 different entries; include description

- 2530 Abstract
- 2531 Action
- 2532 Agriculture - anything related to farming or gardening
- 2533 Architecture
- 2534 Flower
- 2535 Historical - identify with a label
- 2536 Photojournalism – news / sports
- 2337 People
- 2538 Person or People with Animal(s)
- 2539 Pet(s) - domesticated animal(s)
- 2540 Portrait
- 2541 Scenery/Landscape
- 2542 Selfie
- 2543 Still Life
- 2544 Sunrise/Sunset
- 2545 Underwater
- 2546 Waterscape/Seascape
- 2547 Wildlife - any animal in nature; including birds, insects, reptiles, mammals, etc.
- 2548 Lightning/Fireworks/Night Display
- 2555 Other photograph not mentioned - limit of 3 different entries; include a description

4-H Photographs

Danish Points

- | | | |
|------|---|-----------|
| 2560 | Single color or black and white photograph from a previous 4-H or Youth Fair | 5 - 4 - 3 |
| 2561 | Single photograph of a 4-H project or activity | 5 - 4 - 3 |
| 2562 | Collection of 3 to 5 photographs from a previous 4-H or Youth Fair | 7 - 6 - 5 |
| 2563 | 4-H Picture Story - minimum of 6 different photographs showing a phase of the exhibitor’s project; include captions | 7 - 6 - 5 |

DIVISION 25 - Photography (cont.)

Other

2570	Single photograph using a photographic technique; attach a description of the technique. Up to 3 photographs may be entered, each using a different technique.	5 - 4 - 3
2571	Collection of 3 to 5 photographs using a photographic technique; attach a description of the technique. Up to 3 collections may be entered, each using a different technique.	7 - 6 - 5
2572	Handmade photographic equipment; attach a description of what it is, how it was made, and how it is used.	7 - 6 - 5

Danish Points

2573	Collection of 3 to 5 photographs with only one theme or subject.	7 - 6 - 5
2574	Photograph editing - use of editing software; include before and after photographs; limit of 3 different sets of entries	7 - 6 - 5

Developed and Printed by the Exhibitor - Black and White or Color

If you have entries, please contact Jeanne Tippett, the 4-H Fair Association Secretary, at (413) 592-1792 for class number assignments.

2575	MAFA State Photography Competition	Danish Points 5 - 4 - 3
------	------------------------------------	--------------------------------


MAFA State Photography Competition Information

The Massachusetts Agricultural Fair Association (MAFA) hosts a statewide photography contest. The first place winner from each member Fair will be judged at the Annual MAFA convention in November. The winning photographs will be featured in MAFA and Massachusetts Department of Agricultural Resources (MDAR) publications. The winning photographers will receive special recognition and passes to many Massachusetts Fairs.

Contest Rules and Regulations

- ✿ The photograph must be exhibited in a MAFA member's 2023 Fair by a non-professional adult or youth.
- ✿ The subject of the photograph must be agricultural in nature and/or depicting the agricultural aspects of a Massachusetts Fair.
- ✿ The photograph must be exhibited and judged to be the best overall photograph that meets the subject criteria for this contest at the originating member Fair.
- ✿ Though photographs may be exhibited at the Fair in a certain size, frame, etc., only an 8 x 10 inch unmatted and unframed photograph will be judged at the convention. Therefore, winning photographers may need to resize and/or de-frame and de-matt the original exhibited piece before it is submitted to MAFA.
- ✿ The winning photograph will reproduce with the best quality if it is taken with a minimum of 300 dpi, but this is not a requirement for submission.
- ✿ MAFA and MDAR have the right to use the winning photograph in publications promoting agriculture in the state of Massachusetts.

DIVISION 26 - Science, Technology, Engineering, and Math (STEM)

 Read Fair General Rules and Hall Exhibit General Rules.

Thank you to the *MA 4-H Steam Festival* for inspiration, categories and ideas.

Danish Points: 8 - 6 - 4

Science

- 2601 First Aid Kit for animals - list contents of kit on a small card
- 2602 First Aid Kit for people - list contents of kit on a small card
- 2605 Go Green Recycle/Upcycle - create a new item from upcycled material; include a brief description on a small card
- 2607 Handmade Soap - melt and pour process
- 2608 Handmade Soap - cold press process
- 2609 Handmade Soap - lye process
- 2610 Handmade Slime - include a brief description listing materials and process

Classes 2615 - 2619: Include a brief description why and how you created the project, and how it functions. Additional supporting materials requested are listed below.

- 2615 Greenhouse Handmade
- 2616 Greenhouse from a Kit - indicate the kit name
- 2617 Space / Astronomy Project Handmade
- 2618 Space / Astronomy Project from a Kit - indicate the kit name
- 2619 Miscellaneous Science Project - any other science related program not mentioned; limit 3 different projects





Technology

Danish Points: 8 - 6 - 4

Classes 2622 - 2628: Include a brief description why and how you created the project, and how it functions. Additional supporting materials requested are listed below.

- 2622 Electronic Robotics Project (handmade or kit - indicate kit name)
- 2623 Electrical Repaired
- 2624 Interactive Electrical Display
- 2625 Other Electrical item not mentioned
- 2626 3D Printed Design - any object designed and made using a 3D printer
- 2627 Short Form Video - maximum 2 minutes; can be a demonstration, stop animation, promotional or another genre

Video entries due July 15th. Videos will be judged before and showcased at the fair.

-  Digital link should be attached in the fair entry.
-  Must include a title and 4H clover.
-  Credit or reference resources and materials used, where applicable.
-  Sample storyboard and resources at: <https://ag.umass.edu/mass4h/programs/science-engineering-technology/movie-making>

- 2628 Miscellaneous Technology Project - any other technology item not mentioned; limit 3 different projects.

DIVISION 26 - Science, Technology, Engineering, and Math (STEM) (cont.)

Engineering

Danish Points: 10 - 8 - 6

Classes 2630 - 2635: Include a brief description why and how you created the project, and how it functions. Additional supporting materials requested are listed below.

- 2630 Lego or Other Building Blocks - motorized
- 2631 Lego Structure or Other Building Blocks - replicate a building, monument, bridge, fairgrounds; include a labeled picture of your inspiration
- 2632 Bottle Rocket - 2 liter bottle
- 2633 Catapult - create a working structure; handmade or kit, indicate kit name
- 2634 Non-electronic Robotics Project - handmade or kit, indicate kit name
- 2635 Miscellaneous Engineering Project - any other engineering item not mentioned; limit 3 different projects

Math

Danish Points: 10 - 8 - 6

- 2640 Tangram Design - a tangram is a set of seven geometric shapes made up of five triangles (two small triangles, one medium triangle and two large triangles), a square and a parallelogram.
 - ✿ Shapes may be any scale size, paper material or color
 - ✿ Submission should be neatly presented on paper; no glass
 - ✿ Include a description with the project; include a picture of your inspiration
 - ✿ More information on tangrams available at: <https://www.hand2mind.com/glossary-of-hands-on-manipulatives/tangrams>
- 2641 Analog Game - create your own board or card game; include play instructions
- 2642 Pixelation - creation using pixels; break down any image into large or small squares; neatly present submission on paper; no glass
- 2643 Miscellaneous Math Project - any other math project not mentioned; limit 3 different projects

NEW FOR 2023 What's a birthday without a parade?!!

Danish Points: 10 - 8 - 6

2645 STEM Challenge Class "70 Years of Fairs & Fun" Shoebox Float Parade

- ✿ Upcycle a shoebox or other small box to create a parade float.
- ✿ Box size: less than 12" x 12"
- ✿ Must include a 4-H clover in the decorations
- ✿ More information and pictures available at <http://blogs.ifas.ufl.edu/cals/2021/10/08/celebrating-the-2nd-annual-cals-shoebox-parade/>
- ✿ Express your creativity and decorate your float. Go all out and have fun!

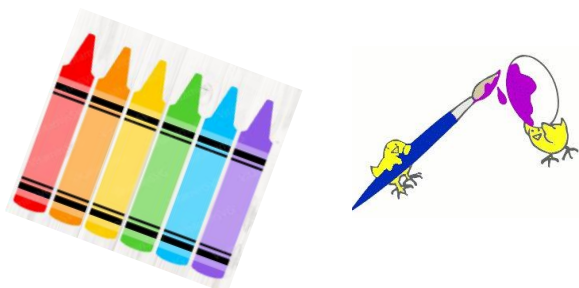


MORE FAIR ACTIVITIES

Check social media sites and the schedule posted at the day of the Fair for additional events not mentioned on this page.

ARTS, CRAFTS, GAMES

All Day Activities Vary



RAFFLE

Drawings All Day

Fabulous raffle items are donated by 4-H families and area businesses. You do not have to be present to win.



RICK SULLIVAN MEMORIAL 4-H FUN RUN

9:00 a.m. (rain or shine)

RACE CATEGORIES

5 years and under

6- 8 years

9-11 years

12-15 years

16-18 years

DISTANCE

$\frac{1}{2}$ mile

$\frac{1}{4}$ mile

$\frac{1}{4}$ mile

$\frac{1}{2}$ mile

Registration form located at the back of the fair book or register the day of the fair. T-shirts to the first 50 entries. Ribbons to all participants. Juice and snacks at the end of the race.

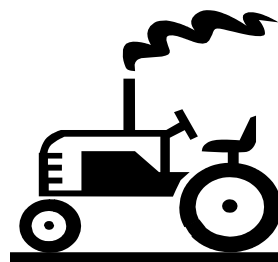
PEDAL TRACTOR PULL

11 a.m.

Classes for ages 3-4 years,
5-6 years, 7-8 years,
9-10 years

Ribbons to be awarded.

Registration begins at 10 a.m.



PEDAL THRU YOUTH

1 p.m.

Bring your own bike or borrow one.

Learn bike safety and laws.

Minor bike repairs and adjustments provided.

Join in the bike parade.



BOTTLE ROCKET LAUNCH

10 a.m.

(weather permitting)

4-H members will

assist youth in
launching rockets

made from

1 or 2 liter bottles.



OUR 2022 DONORS

*Sponsors are always needed for awards.
Individuals, families, or businesses interested in being a sponsor, please contact
Carey Leckie at thumpah@aol.com or call 413-297-6660.
Donations may be sent to Carey at 463 College Highway Southwick, MA 01077.*

*The Hampden County 4-H / Youth Fair Association wishes to express our sincere appreciation
for our donors' generosity!*

Sarah Bonini and Michael Werman - Southwick
Susan and William Bonini - Feeding Hills
Calabrese Farms – Southwick
Judith and James Frenette - Southwick
Gran-Val Scoop - Granville
Stelle Hubach - West Springfield
Cathleen and John McElligott - West Springfield
Mark and David Modzeleski - Agawam
Patricia Morrison - Springfield - **In Memory of Snazzy**
Susan and Ronald Pac - Southwick
Jeanne and Donald Prior - Agawam
Randolph J. Rexer - West Springfield
Bernice and Frank Rueli - Feeding Hills
Ann Sgrignari - Westfield
Joann and Charles Simmons - East Longmeadow
MaryEllen Sullivan - Feeding Hills
Teddy Bear Pools - Ted Hebert - Chicopee
Donna and Gary Turnbull - Feeding Hills
Turnbull Electric, Inc. - Feeding Hills
Charles Vanheynigen - Westfield

SPECIAL THANKS TO:

- ✿ Eastern States Exposition for the use of their facilities.
- ✿ The Town of Southwick for providing meeting space for the Hampden County 4H/Youth Fair Association.
- ✿ Westfield Technical Academy Graphic Arts Department for printing our past fair books.
- ✿ Autumn Mist Farm for donating and delivering shavings.
- ✿ East Meadow Enterprises for heavy equipment use during the Fair set-up.
- ✿ Calabrese Farm for donating vegetables for the vegetable race.
- ✿ *Pedal Thru Youth* - Robert Charland and the Community Law Enforcement Partners.
- ✿ MAFA for free membership.
- ✿ Hampden County 4-H / Youth Fair Association for its leadership, dedication and donations.
- ✿ Judges for their time and expertise.
- ✿ Adult and youth volunteers who help to make the 4-H/Youth Fair a success.
- ✿ 4-H members for their support of the fair.

*We apologize if we missed anyone.
Please notify the Fair Secretary if we have omitted any 2022 donor.*



HAMPDEN COUNTY 4-H / YOUTH FAIR

JULY 22, 2023



ENTRY FORMS AND AWARD APPLICATIONS

Before filling out the entry forms, read Fair General Rules, 2023 Animal Health Rules for Fairs and Shows, Livestock General Rules and Hall Exhibit General Rules, in addition to the specific rules pertaining to the individual divisions.

When filling out the award applications, refer to Special Awards on page 6.

ENTRY FORMS

Model Horse Show Entry Form.....	68
Fair Entry Form (Dairy, Beef, Sheep, Swine, Goat, Camelids, Dog, Hall Exhibits).....	69
Fair Entry Form (Hall Exhibits).....	71
Rabbit/Cavy Show	73
Rick Sullivan Memorial Fun Run	75

AWARD APPLICATIONS

Zofia Demko Community Service Award	77
Bertha Tower Award	79

VOLUNTEER FORMS	81
------------------------------	----

Photocopy additional forms if needed or download forms from:

<http://hc4hfair.fairentry.com>

or

www.hampdencounty4hfair.org

**HAMPDEN COUNTY 4-H / YOUTH FAIR
MODEL HORSE SHOW ENTRY FORM**

Entry deadline is July 1, 2023

Mail or email entry to: Penny Blomgren
P.O. Box 393
Brimfield, MA 01010
pennyblomgren@aol.com

Name of Exhibitor: _____

Street: _____ City/Town: _____

State: _____ Zip Code: _____ Telephone: _____

Birthdate: ____/____/____ Email Address: _____
 mo. / day / yr.

Division:

- _____ Cloverbud
- _____ Junior
- _____ Senior

Classes:

- 1. ____ Halter
- 2. ____ Breed
- 3. ____ Performance
- 4. ____ Trail
- 5. ____ Jumping
- 6. ____ Costume
- 7. ____ Mini Class
- 8. ____ Collector's

"We agree to leave all exhibits in place until 5 p.m. or after the awards ceremony, whichever is later on Saturday, July 22, 2023 or forfeit the premiums. At that time, it will be our responsibility to remove our exhibits from the premises or make other arrangements for removal. If neither is applicable, exhibits will be discarded."

Exhibitor signature

Parent/Guardian signature

HAMPDEN COUNTY 4H / YOUTH FAIR LIVESTOCK ENTRY FORM
 Dairy, Beef, Working Steer, Sheep, Swine, Goat, Poultry, Dog

Circle one: Cloverbud Junior Senior

Name: _____ Birth Date: _____
mo. / day / yr.

]

Street: _____ City/Town _____

Zip Code: _____ Telephone No.: _____

Email Address: _____

Club Name: _____ Leader's Name _____

(If 4H member)

NUMBER OF LIVESTOCK PENS NEEDED	
Sheep	
Swine	
Goat	

NOTE: All entries should be made online at <http://hc4hfair.fairentry.com>. If you do not have access to the internet then please complete this form. Forms must be post marked by July 12, 2023. All entries **MUST** remain in place until 5:00 pm on Saturday July 22, 2023.

This form can be mailed to: Hampden County 4H Fair Entry Form
 PO Box 62
 Chicopee MA 01021-0062
 or email to: hampdencty4hfair@gmail.com

Please PRINT Clearly

Animal Name	Birth Date	Breed	Tag	Weight (lbs)
<i>Division</i>	<i>Class</i>	<i>Description</i>		
<i>Sample Name</i>	<i>12/31/2022</i>	<i>Holstein</i>	<i>ABC123</i>	<i>500</i>
<i>1</i>	<i>102</i>	<i>Winter Heifer Calf</i>		

HAMPDEN COUNTY 4H / YOUTH FAIR LIVESTOCK ENTRY FORM
 Dairy, Beef, Working Steer, Sheep, Swine, Sheep, Goat, Dog

Exhibitor Name: _____

<i>Animal Name</i>		<i>Birth Date</i>	<i>Breed</i>	<i>Tag</i>	<i>Weight (lbs)</i>
<i>Division</i>	<i>Class</i>	<i>Description</i>			

By signing below, we agree to leave all exhibits in place until 5:00 pm or after the awards ceremony, whichever is later on Saturday, July 22, 2023 or forfeit our premiums. At 5:00 pm., it will be our responsibility to remove our exhibits from the premises or make other arrangements for removal.

 Exhibitor Signature

 Parent / Guardian Signature

HAMPDEN COUNTY 4H / YOUTH FAIR ENTRY FORM
All Hall Exhibits

Circle one: Cloverbud Junior Senior

Name: _____ Birth Date: _____
mo. / day / yr.

Street: _____ City/Town _____

Zip Code: _____ Telephone No.: _____

Email Address: _____

Club Name: _____ Leader's Name _____
(If 4H member)

NOTE: All entries should be made online at <http://hc4hfair.fairentry.com>. If you do not have access to the internet then please complete this form. Forms must be post marked by July 12, 2023. All entries **MUST** remain in place until 5:00 pm on Saturday July 22, 2023. This form can be mailed to: Hampden County 4H Fair Entry Form
 PO Box 62
 Chicopee MA 01021-0062
 or email to: hampdencty4hfair@gmail.com

Please PRINT Clearly

<i>Division</i>	<i>Class</i>	<i>Description</i>
<i>12</i>	<i>1216</i>	<i>Bread and Butter Pickles</i>

HAMPDEN COUNTY 4-H / YOUTH FAIR

RABBIT / CAVY SHOW ENTRY FORM

Exhibitor No. _____

Circle one: *Cloverbud* *Novice* *Junior* *Senior*

Name _____ Birthdate ____ / ____ / ____
mo. / day / yr.

Street _____ City/Town _____

State _____ Zip Code _____ Telephone No. _____

E-mail Address _____

Club Name _____ Club Leader _____

***"We agree to leave our animals in place
until 5 p.m. or after the awards ceremony whichever is later on
Saturday, July 22, 2023 or forfeit the premiums."***

Exhibitor signature

Parent/Guardian signature

Mail or email entry to: Hampden County 4-H Fair Association **Entry fees:** \$1.50 for Breed Class
P.O. Box 62 .50 for Fur Class
Chicopee, MA 01021 .50 for Pet Class
Telephone: (413) 592-1792 .50 for Costume Class
hampdencty4hfair@gmail.com

Total Entry Fee: \$ _____

(List classes and fees on the back of this form)

Make checks payable to: Hampden County 4-H/Youth Fair. No refunds for scratched entries.

Entries MUST be postmarked by July 12, 2023
NO ENTRIES WILL BE ACCEPTED THE DAY OF THE SHOW !

(use back of form)

HAMPDEN COUNTY 4-H / YOUTH FAIR RABBIT / CAVY SHOW ENTRY FORM

*****All exhibitors must enter a Showmanship Class*****

Exhibitor's Name: _____

Use Black or Blue Ink Only

COOP NO.	BREED AND VARIETY	EAR NO.	SEX	CLASS	ENTRY FEE

RICK SULLIVAN

MEMORIAL

4-H FUN RUN



WHEN: July 22, 2023

WHERE: Eastern States Exposition Grounds
Track Adjacent to the Mallary Complex

TIME: 9:00 A.M.

T-Shirts to the first 50 registrants
Water and Gatorade provided

RACE CATEGORIES

5 years old and under	$\frac{1}{8}$ mile
6 years - 8 years old	$\frac{1}{4}$ mile
9 years - 11 years old	$\frac{1}{2}$ mile
12 years - 15 years old	$\frac{1}{2}$ mile
16 years - 18 years old	$\frac{1}{2}$ mile

Please complete entry form and release on the reverse side.

RICK SULLIVAN MEMORIAL 4-H FUN RUN

Name _____

Street _____ City/Town _____

State _____ Zip Code _____ Telephone No. _____

Birthdate / / Gender _____ E-mail _____
 mo. / day / yr.

T-SHIRT SIZE

Indicate your T-Shirt size

CHILD: _____ Small _____ Medium _____ Large

ADULT: _____ Small _____ Medium _____ Large _____ Extra Large

T-shirt sizes guaranteed only if registered at least 10 days before the race. T-shirts may be picked up on Friday, July 21st from 6:00 to 7:00 p.m. or from 8:00 to 9:00 a.m. on Saturday, July 22nd. You may also register for the Fun Run during those times.

RELEASE FROM LIABILITY

In consideration of the acceptance of my entry, I, on behalf of myself, my heirs, executors, administrators, and assignees, hereby release myself and discharge the Hampden County 4-H Fair Association, the 4-H Program, and all other sponsors or beneficiaries and representatives, successors, and assignees from any and all claims for damages and causes of action arising from or out of my participation in the 4-H Fun Run. I attest that I am physically fit and that my condition has been verified by a physician. I hereby give permission to the Hampden Country 4-H Fair Association and any other sponsor of this event to use all information submitted in this application and any record of this race containing my likeness. I hereby certify that I have read all the terms and conditions of this release and intend to be legally bound thereby.

Signature _____ Date _____

Signature of Parent or Guardian _____ Date _____

Incomplete or unsigned entries will not be accepted.

Mail entry to: Maryellen Sullivan, 38 Sequoia Drive, Feeding Hills, MA 01030, (413) 575-1759

**ZOAFIA DEMKO COMMUNITY SERVICE
AWARD APPLICATION**

Name _____ E-mail _____

Street _____ City/Town _____

State _____ Zip Code _____ Telephone No. _____

Birthdate / / School Grade _____ Number of years in 4-H _____
mo. / day / yr.

4-H Service Information

Approximate number of hours served in the past 24 months: _____

Where were these service hours performed? Check all that apply.



- Club/Group Activity Individual Activity Local Level
 County Level State Level Other (please describe)

Please list your 4-H and community service activities over the past 24 months and whether they were part of 4-H or another group:

(over)

List significant scholastic and community awards, offices, and honors over the past 24 months as they relate to your community service activities (i.e. chairman of food drive, fund raising committees, etc.). Be specific.

Please submit the following information with this application:

-  One letter of recommendation
-  Personal essay (typed, no more than one page) answering the following questions:
 - How have your extracurricular activities demonstrated your commitment to public service?
 - How do you feel your community service activities benefited yourself and the community?




Signature _____ Date _____

Mail entry by July 13th to: Sue Wright
28 North West Street
Feeding Hills, MA 01030

BERTHA TOWER AWARD APPLICATION

Name _____ E-mail _____
 Street _____ City/Town _____
 State _____ Zip Code _____ Telephone No. _____
 Birthdate / / School Grade _____ Number of years in 4-H _____
mo. / day / yr.

Guidelines for award recipient selection:

-  Active Hampden County 4-H member (club, community, county)
-  Exhibitor at the current Hampden County 4-H/Youth Fair
-  Participation in the 4-H clothing, food, food preservation, and/or needlecraft (includes knitting and crocheting) projects.

I. List the Home Economics projects completed during the current year.

PROJECT	ITEMS COMPLETED	EXHIBITED AT 4-H FAIR?
CLOTHING		
FOOD PRESERVATION		
FOOD		

(over)

PROJECT	ITEMS COMPLETED	EXHIBITED AT 4-H FAIR?
NEEDLECRAFT (include knitting and crocheting)		

II. List your involvement in club, community, and county activities. Be specific.

III. Why do you feel 4-H Home Economics projects are important?

Signature _____ Date _____

Submit the completed application to the Hampden County 4-H/Youth Fair Association Secretary by 9:00 a.m. on July 22, 2023.



I AM INTERESTED IN BECOMING A 4-H VOLUNTEER

Name _____ Telephone Number _____

Address _____ E-mail _____

Please consider becoming a 4-H volunteer. The Hampden County 4-H / Youth Fair Association needs volunteers to help organize, promote, and run the Fair. The Massachusetts 4-H / Youth Development Program in Hampden County is recruiting volunteers interested in any of the following opportunities:

- I would like to attend the Hampden County 4-H / Youth Fair Association meetings
- I would like to be a judge at the Hampden County 4-H / Youth Fair
- I would like to start a 4-H club in Hampden County
- I would like to be a judge for Visual Presentations
- I would like to discuss teaching a short-term special interest 4-H project
- I would like to volunteer to work at the Hampden County 4-H Milk Booth during the Big E
- I would like to volunteer to work at the 4-H Apple Booth during the Big E
- I would like to discuss my volunteer options

Please mail or e-mail this form to:

**Angelica Paredes, Extension Educator, University of Massachusetts, 100 Venture Way,
Suite 334, Hadley, MA 01035-9462
email: angelica@umext.umass.edu**



UMass Extension is a unit of the Center for Agriculture, Food & the Environment in the College of Natural Sciences. UMass Extension is an equal opportunity provider & employer, United States Department of Agriculture cooperating. Contact your local UMass Extension office for information on disability accommodations or the UMass Director if you have concerns related to discrimination, 413-545-4800 or refer to www.extension.umass.edu/civilrights.

UNIVERSITY OF MASSACHUSETTS AMHERST



Years of Fairs & Fun!